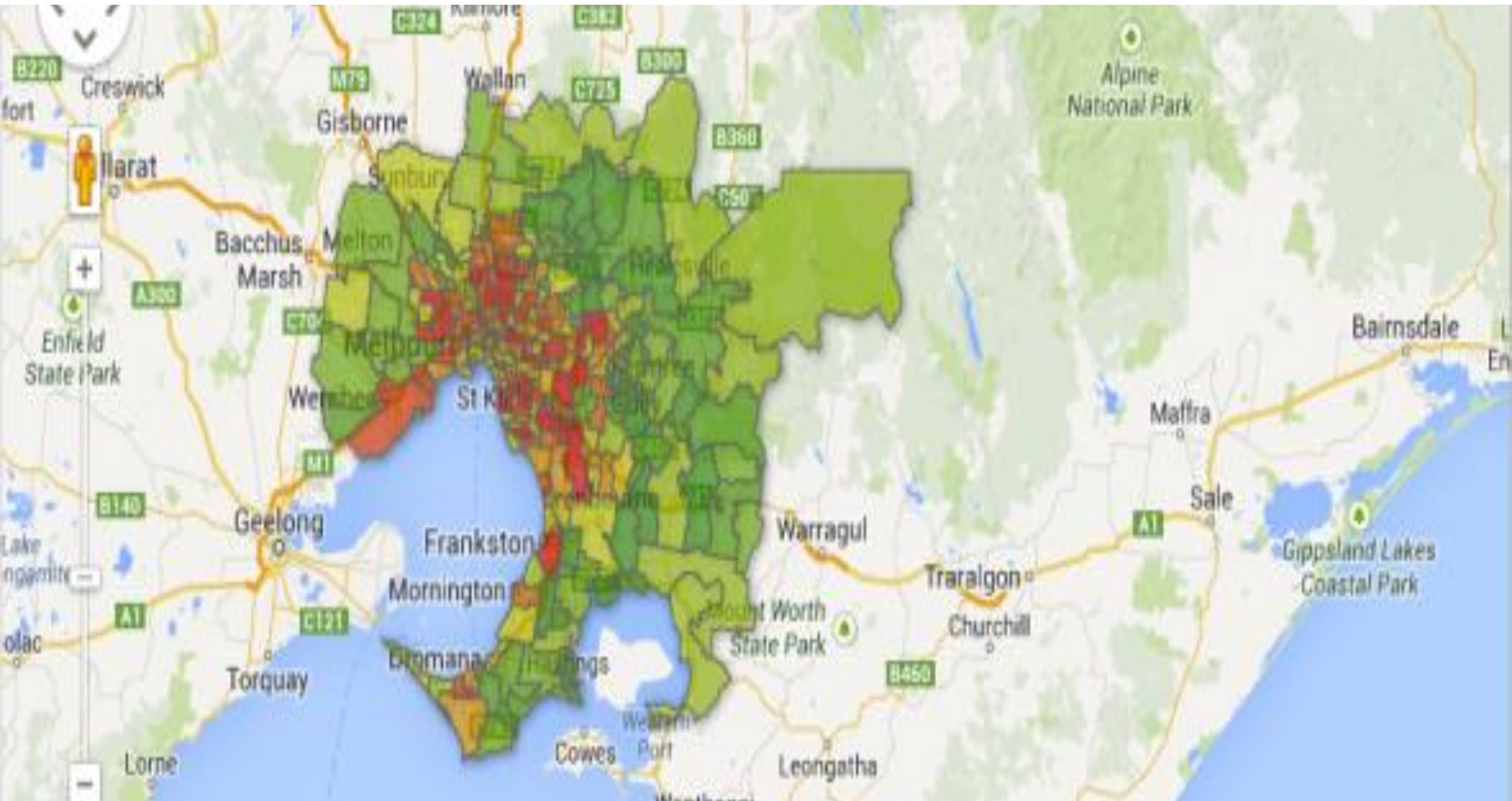


# Disaster Resilience: Can the homeless afford it?

Danielle Every, CQUniversity



# Mapping social vulnerability and natural disasters



**Disaster risk, including death, injury, economic loss, psychological damage, is not random, but maps onto existing social inequalities.**



# Homelessness: its more diverse than we think



Most people experiencing homelessness are children, young adults and single parent families.

# Vulnerability risk factors for people experiencing homelessness

- Lack of resources
- Lack of access to services
- Limited social inclusion
- Pre-existing physical, mental and emotional stressors





# Disaster preparation and people experiencing homelessness



No money for purchasing  
extra resources  
No access to secure shelter  
Not always publicly visible



# Disaster risk communication and homelessness




No access to communication networks and devices  
Negative experiences with authority  
Mental illness influences risk perception

# Recovery and homelessness



Losing safe places, income and services  
Losing hope  
Higher risk of post-traumatic stress disorder





Specialist  
post-disaster  
counselling

Targeted funding  
schemes for self-  
empowerment

# BUILDING DISASTER RESILIENCE

Training for  
agencies,  
personnel and  
homeless  
people

Outreach risk  
communication