



A hazard reduction burn outside Darwin in 2016. Photo: Bushfire and Natural Hazards CRC

Key Topics:

- fuel reduction [2]
- planning [3]
- prescribed burning [4]

Scenario planning for remote community risk management in northern Australia [5]

The project has developed a framework to aid fire and emergency services agencies in engaging with remote Indigenous communities in order to improve emergency services delivery. The research has developed a suite of case studies through which interviews and workshops have been conducted with members of the now-widespread Indigenous Ranger Groups to ascertain the aspirations, willingness and capacity of the Rangers to engage in emergency management activities. This final report summarises the activities undertaken and information gathered to date. This project has also continued the service delivery program of land management and monitoring and evaluation tools to assist fire managers in remote north Australia. The research team provided information with respect to the spatial distribution and effects of fire on tropical savanna and rangeland habitats through the Savanna Monitoring and Evaluation Reporting Framework, also developed through the project.

Project: detail Notabs

Research team

Research leader

[6]



Adj Prof Jeremy Russell-Smith

[6]


RESEARCH LEADER



[7]

Research team


[8]



Dr Andrew Edwards

[8]

[9]



Cameron Yates

[9]

RESEARCH TEAM



[7]

RESEARCH TEAM



[7]



**Dominique Lynch**

[10]

RESEARCH TEAM



[10]

[7]



**Prof Douglas Paton**

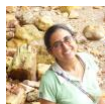
[11]

RESEARCH TEAM



[11]

[7]



**Kamaljit Sangha**

[12]

RESEARCH TEAM



[12]

[7]



**A/Prof Lindsay Hutley**

[13]

RESEARCH TEAM



[13]

[7]



**Prof Michael Douglas**

[14]

RESEARCH TEAM



[14]

[7]



**Dr Neil Burrows**

[15]

RESEARCH TEAM

[15]



**Dr Natalie Rossiter-Rachor**

[16]

RESEARCH TEAM



[16]

[7]



**A/Prof Stefan Maier**

[17]

RESEARCH TEAM



[17]

[7]



**A/Prof Samantha Setterfield**

[18]

RESEARCH TEAM



[18]

[19]



**Steve Sutton**

[20]

RESEARCH TEAM

[20]



**Dr Vanessa Adams**

[21]

RESEARCH TEAM

[21]

Description

This research has developed a suite of case studies. In each case, interviews/workshops have been conducted with members of the, now, wide-spread Indigenous Ranger Groups (IRGs) to ascertain the aspirations, willingness and capacity of the Indigenous Rangers to engage in emergency management activities. The main identified issues across the selected remote communities include little engagement of locals, if any, in managing emergency situations around the community, inappropriate placement of emergency management plans in police stations, lack of resources and services in remote communities, broader recognition of IRGs capacity to deliver emergency management services, and willingness of IRGs to participate in EM services.

This research continues the service delivery program of land management, monitoring and evaluation tools to assist fire managers in remote north Australia. To develop "Improved Fire Management Regimes", the research team provides information with respect to the spatial distribution, and effects of fires on tropical savanna and rangeland habitats through the Savanna Monitoring & Evaluation Reporting Framework (SMERF). In particular, they include the development of a fire severity map product, not only to inform land management, but to improve Savanna Burning greenhouse gas emissions calculations.

This project addresses ongoing priorities identified by partner agencies and community stakeholders requiring further action-based research and implementation, especially addressing:

- Understanding the full "costs and benefits" of engaging with IRGs in delivery of effective emergency management in remote community settings
- Full accounting of the costs of natural hazards and disasters in northern Australia
- Ongoing development of tools to assist savanna fire managers, for example: fire behavior models, improved fire mapping resolution, curing mapping.

[Read the final report here.](#) [22]

Download:

 Savanna fire management for north Australia – project overview [23]

Related News



08 SEP 2021

Supporting resilience in Indigenous communities: how the emergency management sector can do better  
EMERGENCY MANAGEMENT, INDIGENOUS COMMUNITIES

[24]



22 APR 2021

New online – April 2021  
MULTI-HAZARD, RESILIENCE

[25]



25 FEB 2021

Indigenous expertise is reducing bushfires in northern Australia. It's time to consider similar approaches for other disasters  
EMERGENCY MANAGEMENT, INDIGENOUS COMMUNITIES

[26]



28 JAN 2021

New online - January 2021  
COMMUNICATION, EMERGENCY MANAGEMENT

[27]



17 NOV 2020

Building capacity in northern Australian communities  
INDIGENOUS COMMUNITIES, LOCAL KNOWLEDGE

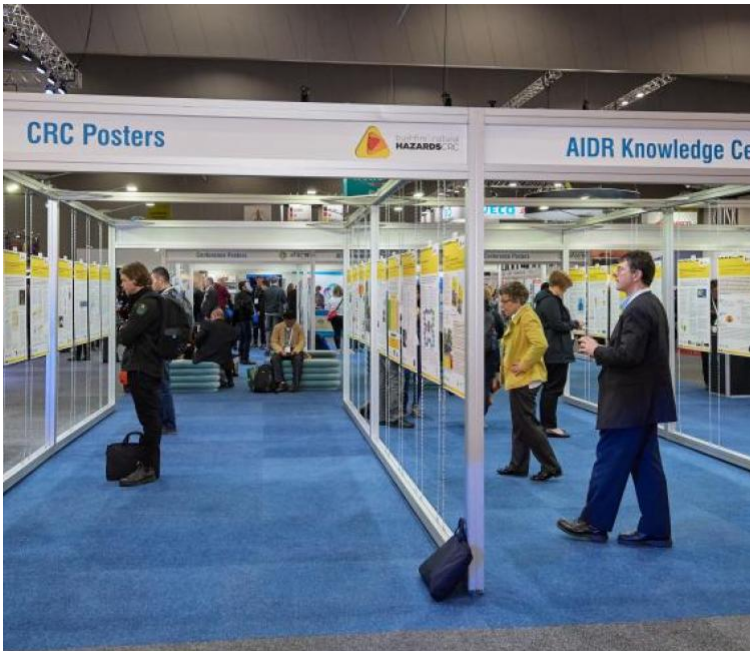
[28]



08 OCT 2020

CRC researchers recognised as science leaders  
EMERGENCY MANAGEMENT, HYDROLOGY

[29]



New online - September 2020  
EMERGENCY MANAGEMENT, FIRE

25 SEP 2020

[30]



Savanna fire  
FRAMEWORK, FUEL REDUCTION

01 JUN 2020

[31]



New online - May 2020  
COMMUNICATION, EMERGENCY MANAGEMENT

21 MAY 2020

[32]



New online - March 2020  
COMMUNICATION, EMERGENCY MANAGEMENT

19 MAR 2020

[33]



07 NOV 2019

AFAC19 research front and centre in Journal  
DECISION MAKING, EMERGENCY MANAGEMENT

[34]



23 OCT 2019

Predictive services research spotlighted  
EMERGENCY MANAGEMENT, FORECASTING

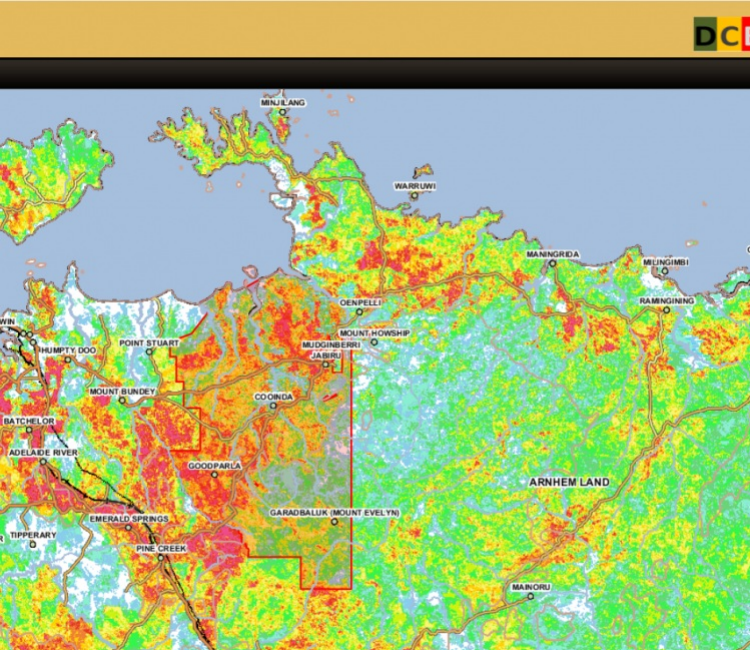
[35]



New online - October 2019  
EMERGENCY MANAGEMENT, ENGINEERING

09 OCT 2019

[36]



Savanna-wide fire mapping  
FRAMEWORK, LAND MANAGEMENT

08 OCT 2019

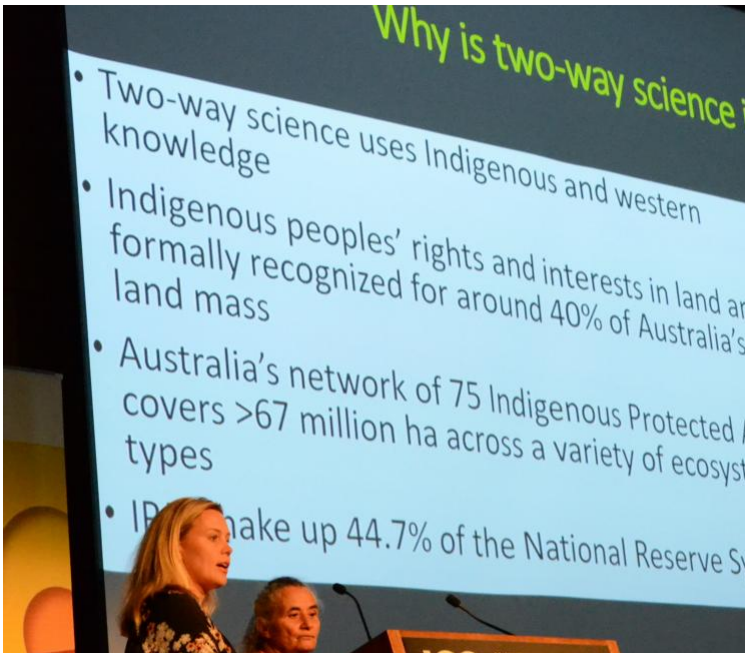
[37]



24 JUL 2019

New online - July 2019  
EMERGENCY MANAGEMENT, FIRE

[38]



15 MAY 2019

Global fire focus on diversity, cultural burning and communities  
COMMUNITIES, DIVERSITY AND INCLUSION

[39]



Prescribed burning research warm up to conference  
FORECASTING, MITIGATION

15 MAY 2019

[40]



New online - May 2019  
EMERGENCY MANAGEMENT, FIRE

15 MAY 2019

[41]



10 MAY 2019

Community and economic impact of Black Saturday investigated in Journal  
COMMUNITIES, DIVERSITY AND INCLUSION

[42]



19 MAR 2019

New online - March 2019  
EMERGENCY MANAGEMENT, FIRE

[43]



Carbon abatement through better fire mapping  
FIRE, NORTHERN AUSTRALIA

12 DEC 2018

[44]



Making a difference  
FIRE, RISK MANAGEMENT

01 JUN 2018

[45]



Enhancing teamwork and research utilisation  
COMMUNITIES, DECISION MAKING

31 MAY 2018

[46]



New online - February 2018  
EMERGENCY MANAGEMENT, MULTI-HAZARD

13 FEB 2018

[47]



18 DEC 2017

Carbon abatement through better fire mapping  
FIRE, NORTHERN AUSTRALIA

[48]



24 NOV 2017

Updates from north Australia research  
COMMUNITIES, FIRE

[49]



New online - November 2017

17 NOV 2017

[50]



New online - October 2016

13 OCT 2016

[51]



26 FEB 2016

Out and about for Top End science  
FIRE IMPACTS, FIRE SEVERITY

[52]



25 FEB 2016

Measuring trees and fire in the Top End  
FIRE SEVERITY, NORTHERN AUSTRALIA

[53]



18 FEB 2016

Partners get northern research update  
COMMUNICATION, INDIGENOUS COMMUNITIES

[54]



16 JUL 2015

Book explores a new industry based on fire in the north  
FIRE SEVERITY, INDIGENOUS COMMUNITIES

[55]



Top end resilience discussed  
INDIGENOUS COMMUNITIES, NORTHERN AUSTRALIA

05 JUN 2015

[56]

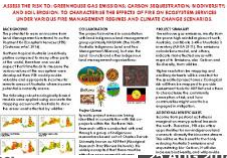
Publications

Year	Type	Citation
2022	Journal Article	Russell-Smith, J. [6] <i>et al.</i> <b>Empowering Indigenous natural hazards management in northern Australia</b> [57]. <i>Ambio</i> (2022). doi:https://doi.org/10.1007/s13280-022-01743-x DOI [58] Google Scholar
2021	Journal Article	Sangha, K. [12], Russell-Smith, J. [6], Edwards, A. C. [8] & Surjan, A. [62] <b>Assessing the real costs of natural hazard-induced disasters: A case study from Australia's Northern Territory</b> [63]. <i>Natural Hazards</i>
2020	Journal Article	Yates, C. P. [9], MacDermott, H. [68], Evans, J. [69], Murphy, B. P. [70] & Russell-Smith, J. [6] <b>Seasonal fine fuel and coarse woody debris dynamics in north Australian savannas</b> [71]. <i>International Journal of Wildland Fire</i>
2020	Journal Article	Russell-Smith, J. [6], McCaw, L. W. [76] & Leavesley, A. J. [77] <b>Adaptive prescribed burning in Australia for the early 21st Century – context, status, challenges</b> [78]. <i>International Journal of Wildland Fire</i>
2020	Report	Russell-Smith, J. [6], Sangha, K. [12] & Edwards, A. C. [8] <b>Building capacity in north Australian remote communities - utilisation project report</b> [83]. (Bushfire and Natural Hazards CRC, 2020). Google Scholar [84] BibTeX [85] EndNote XML [86]
2020	Report	Russell-Smith, J. [6], Sangha, K. [12] & Edwards, A. C. [8] <b>Scenario planning for remote community risk management in northern Australia - final project report</b> [22]. (Bushfire and Natural Hazards CRC, 2020). Google Scholar [23] BibTeX [24] EndNote XML [25]
2020	Report	Russell-Smith, J. [6], Sangha, K. [12] & Edwards, A. C. [8] <b>Savanna fire management and bushfire and natural hazard scenario planning for north Australia</b> [90]. (Bushfire and Natural Hazards CRC, 2020). Google Scholar [91] BibTeX [92] EndNote XML [93]
2019	Journal Article	Russell-Smith, J. [6], Edwards, A. C. [8], Sangha, K. [12], Yates, C. P. [9] & Gardener, M. [94] <b>Challenges for prescribed fire management in Australia's fire-prone rangelands – the example of the Northern Territory</b> [95]. <i>International Journal of Wildland Fire</i>
2019	Journal Article	Evans, J. [69] & Russell-Smith, J. [6] <b>Delivering effective savanna fire management for defined biodiversity conservation outcomes: an Arnhem Land case study</b> [100]. <i>International Journal of Wildland Fire</i>
2019	Journal Article	Russell-Smith, J. [6] <i>et al.</i> <b>Tree recruitment dynamics in fire-prone eucalypt savanna</b> [105]. <i>Ecosphere</i> <b>10</b> , e02649 (2019). DOI [106] Google Scholar [107] BibTeX [108] EndNote XML [109]
2019	Journal Article	Sangha, K. [12], Edwards, A. C. [8] & Russell-Smith, J. [6] <b>Long-term solutions to improve emergency management services in remote communities in northern Australia</b> [110]. <i>Australian Journal of Emergency Management</i>
2019	Report	Edwards, A. C. [8] <b>Multi-scaled calibration of high-resolution burnt area and fire severity mapping - workshop report</b> [114]. (Bushfire and Natural Hazards CRC, 2019). Google Scholar [115] BibTeX [116] EndNote XML [117]
2018	Journal Article	Setterfield, S. A. [18], Rossiter-Rachor, N. [16] & Adams, V. M. [21] <b>Navigating the fiery debate: the role of scientific evidence in eliciting policy and management responses for contentious planning</b> [120]. <i>International Journal of Wildland Fire</i>
2018	Journal Article	Edwards, A. C. [8], Russell-Smith, J. [6] & Maier, S. [17] <b>A comparison and validation of satellite-derived fire severity mapping techniques in fire prone north Australian savannas: Extreme fire events</b> [121]. <i>International Journal of Wildland Fire</i>
2018	Journal Article	Lynch, E. [128], Russell-Smith, J. [6], Edwards, A. C. [8], Evans, J. [69] & Yates, C. P. [9] <b>Incentivising fire management in Pindan (Acacia shrubland): A proposed fuel type for Australia's Savanna</b> [129]. <i>International Journal of Wildland Fire</i>
2018	Journal Article	Russell-Smith, J. [6] & Sangha, K. [12] <b>Emerging opportunities for developing a diversified land sector economy in Australia's northern savannas</b> [134]. <i>The Rangeland Journal</i> <b>40</b> , 315-330 (2018). DOI [135] Google Scholar [136] BibTeX [137] EndNote XML [138]
2018	Report	Setterfield, S. A. [18] & Rossiter-Rachor, N. [16] <b>Savanna fire management and bushfire and natural hazard scenario planning for northern Australia annual project report part two: managing fire risk</b> [139]. (Bushfire and Natural Hazards CRC, 2018). Google Scholar [140] BibTeX [141] EndNote XML [142]
2017	Journal Article	Sangha, K. [12] & Russell-Smith, J. [6] <b>Towards an Indigenous ecosystem services valuation framework: a north Australian example</b> [143]. <i>Conservation and Society</i> <b>15</b> , 255-269 (2017). DOI [144] Google Scholar [145] BibTeX [146] EndNote XML [147]
2017	Journal Article	Russell-Smith, J. [6], Evans, J. [69], Edwards, A. C. [8] & Simms, A. [148] <b>Assessing ecological performance thresholds in fire prone Kakadu National Park, northern Australia</b> [149]. <i>Ecosphere</i> <b>8</b> , e01888 (2017). DOI [150] Google Scholar [151] BibTeX [152] EndNote XML [153]
2017	Journal Article	Freeman, J. [154], Edwards, A. C. [8] & Russell-Smith, J. [6] <b>Fire-driven decline of endemic <i>Allosyncarpia</i> monsoon rainforests in Northern Australia</b> [155]. <i>Forests</i> <b>8</b> , (2017). DOI [156] Google Scholar [157] BibTeX [158] EndNote XML [159]
2017	Report	Russell-Smith, J. [6] <b>Savanna fire management and bushfire and natural hazard scenario planning for northern Australia: annual project report 2016-17</b> [160]. (Bushfire and Natural Hazards CRC, 2017). Google Scholar [161] BibTeX [162] EndNote XML [163]
2016	Report	Russell-Smith, J. [6], Yates, C. P. [9] & Edwards, A. C. [8] <b>Savanna fire management and bushfire and natural hazard scenario planning for northern Australia: annual project report 2015-2016</b> [164]. (Bushfire and Natural Hazards CRC, 2016). Google Scholar [165] BibTeX [166] EndNote XML [167]
2015	Conference Paper	Rumsewicz, M. [168] <b>Research proceedings from the 2015 Bushfire and Natural Hazards CRC &amp; AFAC conference</b> [169]. <i>Bushfire and Natural Hazards CRC &amp; AFAC annual conference 2015 (Bushfire and Natural Hazards CRC &amp; AFAC)</i>
2015	Conference Paper	Edwards, A. C. [8], Russell-Smith, J. [6], Sangha, K. [12] & Yates, C. P. [9] <b>Culturally appropriate mapping tools for informing two-way fire management planning in remote indigenous north Australia</b> [170]. <i>Bushfire and Natural Hazards CRC &amp; AFAC annual conference 2015 (Bushfire and Natural Hazards CRC &amp; AFAC)</i>
2015	Journal Article	Edwards, A. C. [8], Russell-Smith, J. [6] & Meyer, C. P. (Mick) [177]. <b>Contemporary fire regime risks to key ecological assets and processes in north Australian savannas</b> [178]. <i>International Journal of Wildland Fire</i>
2015	Report	Russell-Smith, J. [6] & Edwards, A. C. [8] <b>Savanna fire management and scenario planning for North Australia: Annual project report 2014-2015</b> [183]. (Bushfire and Natural Hazards CRC, 2015). Google Scholar [184] BibTeX [185] EndNote XML [186]

Presentations & Resources

DATE	TITLE	DOWNLOAD	KEY TOPICS
21 Mar 2014	Fire management for northern Australia [189]	7.5 MB	Australia [191], savanna grassland [190]
21 Mar 2014	Fire management training for northern Australia [194]	1.22 MB	Indigenous communities [197], No
11 Sep 2015	Savanna fire management and bushfire and natural hazard scenario planning for North Australia [198]	16.09 MB	Australia [191], planning [3]
14 Dec 2015	Scoping remote north Australian community resilience - project overview [200]	0 bytes	Australia [191], planning [3], resilie
02 Feb 2016	Research for better land management [203]	133.76 KB	Land management [205],
22 Feb 2016	Savanna fire management for north Australia - project overview [206]	0 bytes	Australia [191], planning [3], savan
24 Oct 2016	Savanna fire management and bushfire and natural hazard scenario planning for north Australia [208]	3.85 MB	Planning [3], prescribed burning [4
24 Oct 2016	Flammable grassy weeds [210]	3.42 MB	reduction [2], Northern Austr
27 Jun 2017	Update on SMERF (the Savanna Monitoring and Evaluation Reporting Framework) [212]	1.62 MB	[213] (1.62 MB)
27 Jun 2017	Example SMERF report [214]	197.79 KB	[215] (197.79 KB)
27 Jun 2017	The economics of fire management and community resilience [216]	2.93 MB	[217] (2.93 MB)
07 Jul 2017	Building community resilience in remote north Australia [218]	5.37 MB	Indigenous communities [220],
31 Oct 2017	Prescribed burning cluster [221]	129.41 KB	mitigation [223], prescribe
07 Mar 2018	Strengthening fire mapping for improved fire management and carbon abatement in north Australia [224]	412.36 KB	Land management [205],
17 Apr 2018	Building community resilience in northern Australia [227]	3.92 MB	[229] (3.92 MB) [229], Northern Australia [191],
01 Jun 2018	Fire Australia Issue Two 2018 [230]	6.73 MB	Indigenous communities [220], decision making [232], e
23 Nov 2018	The savanna and rangelands monitoring and evaluation reporting framework [234]	1.67 MB	weather [236], Northern Austr
08 Oct 2019	A monitoring and evaluation framework for the northern savannas [237]	0 bytes	Land management [205], sa
17 Oct 2019	The Savanna and Rangelands Monitoring and Evaluation Reporting Framework (SMERF) [240]	8.51 MB	thern Australia [191]
21 Apr 2020	Landscape prescribed burning: a south west Australian perspective [242]	242.84 KB	Management [233], land manag
13 May 2020	Webinar 2 (13 May): Neil Burrows presentation [244]	4.9 MB	Impacts [246], prescribed burn
18 Nov 2020	Introduction and overview   Northern Australia Research Engagement Forum (1/9) [247]	0 bytes	Indigenous communities [197], local knowle
18 Nov 2020	The Savanna Monitoring and Evaluation Framework   Northern Australia Research Engagement Forum (2/9) [250]	0 bytes	Indigenous communities [197], local knowle
25 Nov 2020	Carbon abatement through better fire mapping [252]		fire [196], Northern Australia [191], prescribe
21 Apr 2021	Building collaborative emergency management capacity in northern Australia [253]	1.54 MB	Indigenous communities [197], Northern Aus
17 May 2021	Fire Australia Issue Two 2021 [255]	11.74 MB	Emergency management [2
15 Jul 2021	Collaboration based on Indigenous leadership [258]		Indigenous communities [197], Northern Aus
08 Sep 2021	Fire Australia Issue Three 2021 [259]	10.72 MB	Indigenous communities

Posters




[262]

29 AUG 2014

Assessing ecological risk with indigenous communities: Tropical savannas Northern Australia

[262]

This project builds upon substantial work previously undertaken within the facility of the Bushfire CRC "...



[263]

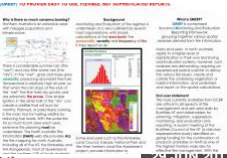
14 AUG 2016

The Savanna burning project

[263]

SAVANNA GRASSLANDS [192]

Providing mapping tools from detailed research, modelling and analysis of the occurrence and effects of fire...



[264]

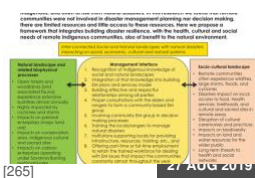
29 JUN 2017

The Savanna Monitoring & Evaluation Reporting Framework (SMERF)

[264]

FUEL REDUCTION [2], PLANNING [3]

The work undertaken through the Bushfire and Natural Hazards CRC is part of a savanna-wide program of mostly...



[265]

A joint platform to manage natural disasters in remote locations

[265]

NORTHERN AUSTRALIA [191]

North Australia is at risk from bushfires, cyclones, storms and floods. In 2016-17 the average cost of major...



[266]

Scenario Planning for Remote Community Risk Management in northern Australia

[266]

FIRE [196], NORTHERN AUSTRALIA [191]

Key findings: Long term support from Fire and Emergency Services Agencies is necessary to develop the...



[267]

Savanna Monitoring & Evaluation Reporting Framework

[267]

FUEL REDUCTION [2], PLANNING [3]

## Linked Projects

Remote sensing of tree structure and biomass in north Australian mesic savanna

[268]

PRESCRIBED BURNING AND CATCHMENT MANAGEMENT [269]

Dr Grigorijs Goldbergs  
Charles Darwin University [7]



[7]

Source URL: <https://www.bnhcrc.com.au/node/261/generate-pdf>

Links

[1] <https://www.bnhcrc.com.au/files/signsmokemotorbike.jpg> [2] <https://www.bnhcrc.com.au/research/topics/fuel-reduction> [3] <https://www.bnhcrc.com.au/research/topics/planning> [4] <https://www.bnhcrc.com.au/research/topics/prescribed-burning> [5] <https://www.bnhcrc.com.au/research/firemanagement> [6] <https://www.bnhcrc.com.au/people/russellsmith> [7] <https://www.bnhcrc.com.au/organisations/cdu> [8] <https://www.bnhcrc.com.au/people/aedwards> [9] <https://www.bnhcrc.com.au/people/cyates> [10] <https://www.bnhcrc.com.au/people/dlynch> [11] <https://www.bnhcrc.com.au/people/dpaton> [12] <https://www.bnhcrc.com.au/people/ksangha> [13] <https://www.bnhcrc.com.au/people/hutley> [14] <https://www.bnhcrc.com.au/people/mdouglas> [15] <https://www.bnhcrc.com.au/people/nburrows> [16] <https://www.bnhcrc.com.au/people/rossiottorachor> [17] <https://www.bnhcrc.com.au/people/smaier> [18] <https://www.bnhcrc.com.au/people/ssetterfield> [19] <https://www.bnhcrc.com.au/organisations/uwa> [20] <https://www.bnhcrc.com.au/people/ssutton> [21] <https://www.bnhcrc.com.au/people/vadams> [22] <https://www.bnhcrc.com.au/publications/biblio/bnh-7739> [23] <https://www.youtube.com/watch?v=8zLFL7o8vNQ> [24] <https://www.bnhcrc.com.au/news/2021/supporting-resilience-indigenous-communities-how-emergency-management-sector-can-do-better> [25] <https://www.bnhcrc.com.au/news/2021/new-online-april-2021> [26] <https://www.bnhcrc.com.au/news/blogpost/ksangha/2021/indigenous-expertise-reducing-bushfires-northern-australia-it-s-time> [27] <https://www.bnhcrc.com.au/news/2021/new-online-january-2021> [28] <https://www.bnhcrc.com.au/news/2020/building-capacity-northern-australian-communities> [29] <https://www.bnhcrc.com.au/news/2020/crc-researchers-recognised-science-leaders> [30] <https://www.bnhcrc.com.au/news/2020/new-online-september-2020> [31] <https://www.bnhcrc.com.au/news/2020/savanna-fire> [32] <https://www.bnhcrc.com.au/news/2020/new-online-may-2020> [33] <https://www.bnhcrc.com.au/news/2020/new-online-march-2020> [34] <https://www.bnhcrc.com.au/news/2019/afac19-research-front-and-centre-journal> [35] <https://www.bnhcrc.com.au/news/2019/predictive-services-research-spotlighted> [36] <https://www.bnhcrc.com.au/news/2019/new-online-october-2019> [37] <https://www.bnhcrc.com.au/news/2019/savanna-wide-fire-mapping> [38] <https://www.bnhcrc.com.au/news/2019/new-online-july-2019> [39] <https://www.bnhcrc.com.au/news/2019/global-fire-focus-diversity-cultural-burning-and-communities> [40] <https://www.bnhcrc.com.au/news/2019/prescribed-burning-research-warm-conference> [41] <https://www.bnhcrc.com.au/news/2019/new-online-may-2019> [42] <https://www.bnhcrc.com.au/news/2019/community-and-economic-impact-black-saturday-investigated-journal> [43] <https://www.bnhcrc.com.au/news/2019/enhancing-teamwork-and-research-utilisation> [44] <https://www.bnhcrc.com.au/news/2018/new-online-february-2018> [45] <https://www.bnhcrc.com.au/news/2017/making-difference> [46] <https://www.bnhcrc.com.au/news/2017/enhancing-teamwork-and-research-utilisation> [47] <https://www.bnhcrc.com.au/news/2017/updates-north-australia-research> [48] <https://www.bnhcrc.com.au/news/2017/carbon-abatement-through-better-fire-mapping> [49] <https://www.bnhcrc.com.au/news/2017/updates-north-australia-research> [50] <https://www.bnhcrc.com.au/news/2017/new-online-november-2017> [51] <https://www.bnhcrc.com.au/news/2016/new-online-october-2016> [52] <https://www.bnhcrc.com.au/news/blogpost/nathan-maddock/2016/out-and-about-top-end-science> [53] <https://www.bnhcrc.com.au/news/2016/measuring-trees-and-fire-top-end> [54] <https://www.bnhcrc.com.au/news/2016/partners-get-northern-research-update> [55] <https://www.bnhcrc.com.au/news/2015/book-explodes-new-industry-based-fire-north> [56] <https://www.bnhcrc.com.au/news/2015/top-end-resilience-discussed> [57] <https://www.bnhcrc.com.au/publications/biblio/bnh-8356> [58] <http://dx.doi.org/10.1007/s13280-022-01743-x> [59] [http://scholar.google.com/scholar?btnG=Search%2BScholar&as\\_q=%22Empowering%2BIndigenous%2BNatural%2Bhazards%2Bmanagement%2Bin%2BNorthern%2BAustralia%22&as\\_sauthors=Russell-Smith&as\\_occt=any&as\\_eq=&as\\_oq=&as\\_eq=&as\\_publication=&as\\_ylo=&as\\_yhi=&as\\_sdtAAP=1&as\\_sdtP=1](http://scholar.google.com/scholar?btnG=Search%2BScholar&as_q=%22Empowering%2BIndigenous%2BNatural%2Bhazards%2Bmanagement%2Bin%2BNorthern%2BAustralia%22&as_sauthors=Russell-Smith&as_occt=any&as_eq=&as_oq=&as_eq=&as_publication=&as_ylo=&as_yhi=&as_sdtAAP=1&as_sdtP=1) [60] <https://www.bnhcrc.com.au/publications/biblio/export/bibtex/8356> [61] <https://www.bnhcrc.com.au/publications/biblio/export/xml/8356> [62] <https://www.bnhcrc.com.au/publications/biblio/?f%5Bauthor%5D=1956> [63] <https://www.bnhcrc.com.au/publications/biblio/bnh-7943> [64] <http://dx.doi.org/10.1007/s11069-021-04692-y> [65] [http://scholar.google.com/scholar?btnG=Search%2BScholar&as\\_q=%22Assessing%2Bthe%2Breal%2Bcosts%2Bof%2BNatural%2Bhazard-induced%2Bdisasters%3A%2BA%2Bcase%2Bstudy%2Bfrom%2BAustralia%2Bto%2BNorthern%2BTerritory%22&as\\_sauthors=Sangha&as\\_occt=any&as\\_eq=&as\\_oq=&as\\_eq=&as\\_publication=&as\\_ylo=&as\\_yhi=&as\\_sdtAAP=1&as\\_sdtP=1](http://scholar.google.com/scholar?btnG=Search%2BScholar&as_q=%22Assessing%2Bthe%2Breal%2Bcosts%2Bof%2BNatural%2Bhazard-induced%2Bdisasters%3A%2BA%2Bcase%2Bstudy%2Bfrom%2BAustralia%2Bto%2BNorthern%2BTerritory%22&as_sauthors=Sangha&as_occt=any&as_eq=&as_oq=&as_eq=&as_publication=&as_ylo=&as_yhi=&as_sdtAAP=1&as_sdtP=1) [66] <https://www.bnhcrc.com.au/publications/biblio/export/bibtex/7943> [67] <https://www.bnhcrc.com.au/publications/biblio/export/xml/7943> [68] <https://www.bnhcrc.com.au/publications/biblio/?f%5Bauthor%5D=1712> [69] <https://www.bnhcrc.com.au/people/levans> [70] <https://www.bnhcrc.com.au/people/brettmurphy> [71] <https://www.bnhcrc.com.au/publications/biblio/bnh-7311> [72] <http://dx.doi.org/10.1071/WF20073> [73] [http://scholar.google.com/scholar?btnG=Search%2BScholar&as\\_q=%22Seasonal%2Bfire%2Bfuel%2Bband%2Bcoarse%2Bwoody%2Bdebris%2Bdynamics%2Bin%2BNorthern%2BAustralian%2BSavannas%22&as\\_sauthors=Yates&as\\_occt=any&as\\_eq=&as\\_oq=&as\\_eq=&as\\_publication=&as\\_ylo=&as\\_yhi=&as\\_sdtAAP=1&as\\_sdtP=1](http://scholar.google.com/scholar?btnG=Search%2BScholar&as_q=%22Seasonal%2Bfire%2Bfuel%2Bband%2Bcoarse%2Bwoody%2Bdebris%2Bdynamics%2Bin%2BNorthern%2BAustralian%2BSavannas%22&as_sauthors=Yates&as_occt=any&as_eq=&as_oq=&as_eq=&as_publication=&as_ylo=&as_yhi=&as_sdtAAP=1&as_sdtP=1) [74] <https://www.bnhcrc.com.au/publications/biblio/export/bibtex/7311> [75] <https://www.bnhcrc.com.au/publications/biblio/export/xml/7311> [76] <https://www.bnhcrc.com.au/people/mccaw> [77] <https://www.bnhcrc.com.au/people/aleavesley> [78] <https://www.bnhcrc.com.au/publications/biblio/bnh-6850> [79] <http://dx.doi.org/10.1071/WF20027> [80] [http://scholar.google.com/scholar?btnG=Search%2BScholar&as\\_q=%22Adaptive%2Bprescribed%2Bburning%2Bin%2BAustralia%2Bfor%2Bthe%2Bearly%2B21st%2BCentury%2B%E2%80%93%2Bcontext%2C%2Bstatus%2C%2Bchallenges%22&as\\_saul-Smith&as\\_occt=any&as\\_eq=&as\\_oq=&as\\_eq=&as\\_publication=&as\\_ylo=&as\\_yhi=&as\\_sdtAAP=1&as\\_sdtP=1](http://scholar.google.com/scholar?btnG=Search%2BScholar&as_q=%22Adaptive%2Bprescribed%2Bburning%2Bin%2BAustralia%2Bfor%2Bthe%2Bearly%2B21st%2BCentury%2B%E2%80%93%2Bcontext%2C%2Bstatus%2C%2Bchallenges%22&as_saul-Smith&as_occt=any&as_eq=&as_oq=&as_eq=&as_publication=&as_ylo=&as_yhi=&as_sdtAAP=1&as_sdtP=1) [81] <https://www.bnhcrc.com.au/publications/biblio/export/bibtex/6850> [82] <https://www.bnhcrc.com.au/publications/biblio/export/xml/6850> [83] <https://www.bnhcrc.com.au/publications/biblio/bnh-8037> [84] [http://scholar.google.com/scholar?btnG=Search%2BScholar&as\\_q=%22Building%2Bcapacity%2Bin%2BNorthern%2BAustralian%2Bremote%2Bcommunities%2B-%2Butilisation%2Bproject%2Breport%22&as\\_sauthors=Russell-Smith&as\\_occt=any&as\\_eq=&as\\_oq=&as\\_eq=&as\\_publication=&as\\_ylo=&as\\_yhi=&as\\_sdtAAP=1&as\\_sdtP=1](http://scholar.google.com/scholar?btnG=Search%2BScholar&as_q=%22Building%2Bcapacity%2Bin%2BNorthern%2BAustralian%2Bremote%2Bcommunities%2B-%2Butilisation%2Bproject%2Breport%22&as_sauthors=Russell-Smith&as_occt=any&as_eq=&as_oq=&as_eq=&as_publication=&as_ylo=&as_yhi=&as_sdtAAP=1&as_sdtP=1) [85] <https://www.bnhcrc.com.au/publications/biblio/export/bibtex/8037> [86] <https://www.bnhcrc.com.au/publications/biblio/export/xml/8037> [87] [http://scholar.google.com/scholar?btnG=Search%2BScholar&as\\_q=%22Scenario%2Bplanning%2Bfor%2Bremote%2Bcommunity%2Brisk%2Bmanagement%2Bin%2BNorthern%2BAustralia%2B-%2Bfinal%2Bproject%2Breport%22&as\\_sauthors=Russell-Smith&as\\_occt=any&as\\_eq=&as\\_oq=&as\\_eq=&as\\_publication=&as\\_ylo=&as\\_yhi=&as\\_sdtAAP=1&as\\_sdtP=1](http://scholar.google.com/scholar?btnG=Search%2BScholar&as_q=%22Scenario%2Bplanning%2Bfor%2Bremote%2Bcommunity%2Brisk%2Bmanagement%2Bin%2BNorthern%2BAustralia%2B-%2Bfinal%2Bproject%2Breport%22&as_sauthors=Russell-Smith&as_occt=any&as_eq=&as_oq=&as_eq=&as_publication=&as_ylo=&as_yhi=&as_sdtAAP=1&as_sdtP=1) [88] <https://www.bnhcrc.com.au/publications/biblio/export/bibtex/7739> [89] <https://www.bnhcrc.com.au/publications/biblio/export/xml/7739> [90] <https://www.bnhcrc.com.au/publications/biblio/bnh-6790> [91] [http://scholar.google.com/scholar?btnG=Search%2BScholar&as\\_q=%22Savanna%2Bfire%2Bmanagement%2Bband%2Bbushfire%2Bband%2BNatural%2Bhazard%2Bscenario%2Bplanning%2Bfor%2BNorthern%2BAustralia%22&as\\_sauthors=Russell-Smith&as\\_occt=any&as\\_eq=&as\\_oq=&as\\_eq=&as\\_publication=&as\\_ylo=&as\\_yhi=&as\\_sdtAAP=1&as\\_sdtP=1](http://scholar.google.com/scholar?btnG=Search%2BScholar&as_q=%22Savanna%2Bfire%2Bmanagement%2Bband%2Bbushfire%2Bband%2BNatural%2Bhazard%2Bscenario%2Bplanning%2Bfor%2BNorthern%2BAustralia%22&as_sauthors=Russell-Smith&as_occt=any&as_eq=&as_oq=&as_eq=&as_publication=&as_ylo=&as_yhi=&as_sdtAAP=1&as_sdtP=1) [92] <https://www.bnhcrc.com.au/publications/biblio/export/bibtex/6790> [93] <https://www.bnhcrc.com.au/publications/biblio/export/xml/6790> [94] <https://www.bnhcrc.com.au/publications/biblio/?f%5Bauthor%5D=1620> [95] <https://www.bnhcrc.com.au/publications/biblio/bnh-5418> [96] <http://dx.doi.org/10.1071/WF18127> [97] [http://scholar.google.com/scholar?btnG=Search%2BScholar&as\\_q=%22Challenges%2Bfor%2Bprescribed%2Bfire%2Bmanagement%2Bin%2BAustralia%2B%E2%80%93%2Bfire-prone%2Bregions%2B%E2%80%93%2Bthe%2Bexample%2Bof%2Bthe%2BNorthern%2BTerritory%22&as\\_sauthors=Russell-Smith&as\\_occt=any&as\\_eq=&as\\_oq=&as\\_eq=&as\\_publication=&as\\_ylo=&as\\_yhi=&as\\_sdtAAP=1&as\\_sdtP=1](http://scholar.google.com/scholar?btnG=Search%2BScholar&as_q=%22Challenges%2Bfor%2Bprescribed%2Bfire%2Bmanagement%2Bin%2BAustralia%2B%E2%80%93%2Bfire-prone%2Bregions%2B%E2%80%93%2Bthe%2Bexample%2Bof%2Bthe%2BNorthern%2BTerritory%22&as_sauthors=Russell-Smith&as_occt=any&as_eq=&as_oq=&as_eq=&as_publication=&as_ylo=&as_yhi=&as_sdtAAP=1&as_sdtP=1) [98] <https://www.bnhcrc.com.au/publications/biblio/export/bibtex/5418> [99]

<https://www.bnhcrc.com.au/publications/biblio/export/xml/5418> [100] <https://www.bnhcrc.com.au/publications/biblio/bnh-5417> [101] <http://dx.doi.org/10.1071/WF18126> [102] [http://scholar.google.com/scholar?btnG=Search%2BScholar&as\\_q=%22Delivering%2Beffective%2BSavanna%2Bfire%2Bmanagement%2Bfor%2Bdefined%2Bbiodiversity%2Bconservation%2Boutcomes%3A%2Ban%2Barnhem%2BLand%2Bcase%2Bstudy%22](http://scholar.google.com/scholar?btnG=Search%2BScholar&as_q=%22Delivering%2Beffective%2BSavanna%2Bfire%2Bmanagement%2Bfor%2Bdefined%2Bbiodiversity%2Bconservation%2Boutcomes%3A%2Ban%2Barnhem%2BLand%2Bcase%2Bstudy%22) [103] <https://www.bnhcrc.com.au/publications/biblio/export/bibtex/5417> [104] <https://www.bnhcrc.com.au/publications/biblio/export/xml/5417> [105] <https://www.bnhcrc.com.au/publications/biblio/bnh-6052> [106] <http://dx.doi.org/10.1002/ecs2.2649> [107] [http://scholar.google.com/scholar?btnG=Search%2BScholar&as\\_q=%22Tree%2Brecruitment%2Bdynamics%2Bin%2Bfire-prone%2Beucalypt%2BSavanna%22&as\\_authors=Russell-Smith&as\\_occt=any&as\\_eq=&as\\_oq=&as\\_eq=&as\\_publication=&as\\_ylo=&as\\_yhi=&as\\_sdtAAP=1&as\\_sdtP=1](http://scholar.google.com/scholar?btnG=Search%2BScholar&as_q=%22Tree%2Brecruitment%2Bdynamics%2Bin%2Bfire-prone%2Beucalypt%2BSavanna%22&as_authors=Russell-Smith&as_occt=any&as_eq=&as_oq=&as_eq=&as_publication=&as_ylo=&as_yhi=&as_sdtAAP=1&as_sdtP=1) [108] <https://www.bnhcrc.com.au/publications/biblio/export/bibtex/6052> [109] <https://www.bnhcrc.com.au/publications/biblio/export/xml/6052> [110] <https://www.bnhcrc.com.au/publications/biblio/bnh-5569> [111] [http://scholar.google.com/scholar?btnG=Search%2BScholar&as\\_q=%22Long-term%2Bolutions%2Bto%2Bimprove%2Bemergency%2Bmanagement%2Bservices%2Bin%2Bremote%2Bcommunities%2Bin%2BNorthern%2BAustralia%22&as\\_authors=Sangha&as\\_occt=any&as\\_eq=&as\\_oq=&as\\_eq=&as\\_publication=&as\\_ylo=&as\\_yhi=&as\\_sdtAAP=1&as\\_sdtP=1](http://scholar.google.com/scholar?btnG=Search%2BScholar&as_q=%22Long-term%2Bolutions%2Bto%2Bimprove%2Bemergency%2Bmanagement%2Bservices%2Bin%2Bremote%2Bcommunities%2Bin%2BNorthern%2BAustralia%22&as_authors=Sangha&as_occt=any&as_eq=&as_oq=&as_eq=&as_publication=&as_ylo=&as_yhi=&as_sdtAAP=1&as_sdtP=1) [112] <https://www.bnhcrc.com.au/publications/biblio/export/bibtex/5569> [113] <https://www.bnhcrc.com.au/publications/biblio/export/xml/5569> [114] <https://www.bnhcrc.com.au/publications/biblio/bnh-5585> [115] [http://scholar.google.com/scholar?btnG=Search%2BScholar&as\\_q=%22Multi-scaled%2Bcalibration%2Bof%2Bhigh-resolution%2Bburnt%2Barea%2Band%2Bfire%2Bseverity%2Bmapping%2B-workshop%2Breport%22&as\\_authors=Edwards&as\\_occt=any&as\\_eq=&as\\_oq=&as\\_eq=&as\\_publication=&as\\_ylo=&as\\_yhi=&as\\_sdtAAP=1&as\\_sdtP=1](http://scholar.google.com/scholar?btnG=Search%2BScholar&as_q=%22Multi-scaled%2Bcalibration%2Bof%2Bhigh-resolution%2Bburnt%2Barea%2Band%2Bfire%2Bseverity%2Bmapping%2B-workshop%2Breport%22&as_authors=Edwards&as_occt=any&as_eq=&as_oq=&as_eq=&as_publication=&as_ylo=&as_yhi=&as_sdtAAP=1&as_sdtP=1) [116] <https://www.bnhcrc.com.au/publications/biblio/export/bibtex/5585> [117] <https://www.bnhcrc.com.au/publications/biblio/export/xml/5585> [118] <https://www.bnhcrc.com.au/publications/biblio/bnh-6255> [119] <http://dx.doi.org/10.1071/PC18028> [120] [http://scholar.google.com/scholar?btnG=Search%2BScholar&as\\_q=%22Navigating%2Bthe%2Bfiery%2Bdebate%3A%2Bthe%2Brole%2Bof%2Bscientific%2Bevidence%2Bin%2Beliciting%2Bpolicy%2Band%2Bmanagement%2Bresponses%2Bfor%2Bcontentious%2Bdecisions%2Bto%2Bimprove%2Bemergency%2Bmanagement%2Bservices%2Bin%2BNorthern%2BAustralia%22&as\\_authors=Sangha&as\\_occt=any&as\\_eq=&as\\_oq=&as\\_eq=&as\\_publication=&as\\_ylo=&as\\_yhi=&as\\_sdtAAP=1&as\\_sdtP=1](http://scholar.google.com/scholar?btnG=Search%2BScholar&as_q=%22Navigating%2Bthe%2Bfiery%2Bdebate%3A%2Bthe%2Brole%2Bof%2Bscientific%2Bevidence%2Bin%2Beliciting%2Bpolicy%2Band%2Bmanagement%2Bresponses%2Bfor%2Bcontentious%2Bdecisions%2Bto%2Bimprove%2Bemergency%2Bmanagement%2Bservices%2Bin%2BNorthern%2BAustralia%22&as_authors=Sangha&as_occt=any&as_eq=&as_oq=&as_eq=&as_publication=&as_ylo=&as_yhi=&as_sdtAAP=1&as_sdtP=1) [121] <https://www.bnhcrc.com.au/publications/biblio/export/bibtex/6255> [122] <https://www.bnhcrc.com.au/publications/biblio/export/xml/6255> [123] <https://www.bnhcrc.com.au/publications/biblio/bnh-4399> [124] <http://dx.doi.org/10.1016/j.rse.2017.12.038> [125] [http://scholar.google.com/scholar?btnG=Search%2BScholar&as\\_q=%22A%2Bcomparison%2Band%2Bvalidation%2Bof%2BSatellite-derived%2Bfire%2Bseverity%2Bmapping%2Btechniques%2Bin%2Bfire%2Bprone%2Bnorth%2BAustralian%2BSavannas%3A%2BExtreme%2Bfires%2Band%2Btree%2Bstem%2Bmortality%22&as\\_authors=Edwards&as\\_occt=any&as\\_eq=&as\\_oq=&as\\_eq=&as\\_publication=&as\\_ylo=&as\\_yhi=&as\\_sdtAAP=1&as\\_sdtP=1](http://scholar.google.com/scholar?btnG=Search%2BScholar&as_q=%22A%2Bcomparison%2Band%2Bvalidation%2Bof%2BSatellite-derived%2Bfire%2Bseverity%2Bmapping%2Btechniques%2Bin%2Bfire%2Bprone%2Bnorth%2BAustralian%2BSavannas%3A%2BExtreme%2Bfires%2Band%2Btree%2Bstem%2Bmortality%22&as_authors=Edwards&as_occt=any&as_eq=&as_oq=&as_eq=&as_publication=&as_ylo=&as_yhi=&as_sdtAAP=1&as_sdtP=1) [126] <https://www.bnhcrc.com.au/publications/biblio/export/bibtex/4399> [127] <https://www.bnhcrc.com.au/publications/biblio/export/xml/4399> [128] <https://www.bnhcrc.com.au/publications/biblio/?%5Bauthor%5D=923> [129] <https://www.bnhcrc.com.au/publications/biblio/bnh-6041> [130] <http://dx.doi.org/10.1111/emr.12334> [131] [http://scholar.google.com/scholar?btnG=Search%2BScholar&as\\_q=%22Incentivising%2Bfire%2Bmanagement%2Bin%2BPindar%2BAndacia%2Bshrubland%3A%2BA%2Bproposed%2Bfuel%2Btype%2Bfor%2BAustralia%27s%2BSavanna%2Bburning%2Bgreen](http://scholar.google.com/scholar?btnG=Search%2BScholar&as_q=%22Incentivising%2Bfire%2Bmanagement%2Bin%2BPindar%2BAndacia%2Bshrubland%3A%2BA%2Bproposed%2Bfuel%2Btype%2Bfor%2BAustralia%27s%2BSavanna%2Bburning%2Bgreen) [132] <https://www.bnhcrc.com.au/publications/biblio/export/bibtex/6041> [133] <https://www.bnhcrc.com.au/publications/biblio/export/xml/6041> [134] <https://www.bnhcrc.com.au/publications/biblio/bnh-5143> [135] <http://dx.doi.org/10.1071/RJ18005> [136] [http://scholar.google.com/scholar?btnG=Search%2BScholar&as\\_q=%22Emerging%2Bopportunities%2Bfor%2Bdeveloping%2BA%2Bdiversified%2Bland%2Bsector%2Beconomy%2Bin%2BAustralia%E2%80%99s%2BNorthern%2BSavannas%22&as\\_authors=Smith&as\\_occt=any&as\\_eq=&as\\_oq=&as\\_eq=&as\\_publication=&as\\_ylo=&as\\_yhi=&as\\_sdtAAP=1&as\\_sdtP=1](http://scholar.google.com/scholar?btnG=Search%2BScholar&as_q=%22Emerging%2Bopportunities%2Bfor%2Bdeveloping%2BA%2Bdiversified%2Bland%2Bsector%2Beconomy%2Bin%2BAustralia%E2%80%99s%2BNorthern%2BSavannas%22&as_authors=Smith&as_occt=any&as_eq=&as_oq=&as_eq=&as_publication=&as_ylo=&as_yhi=&as_sdtAAP=1&as_sdtP=1) [137] <https://www.bnhcrc.com.au/publications/biblio/export/bibtex/5143> [138] <https://www.bnhcrc.com.au/publications/biblio/bnh-5143> [139] <https://www.bnhcrc.com.au/publications/biblio/bnh-4687> [140] [http://scholar.google.com/scholar?btnG=Search%2BScholar&as\\_q=%22Savanna%2Bfire%2Bmanagement%2Band%2BBushfire%2Band%2BNatural%2Bhazard%2Bscenario%2Bplanning%2Bfor%2BNorthern%2BAustralia%2Bannual%2Bproject%2Breport%2Bp](http://scholar.google.com/scholar?btnG=Search%2BScholar&as_q=%22Savanna%2Bfire%2Bmanagement%2Band%2BBushfire%2Band%2BNatural%2Bhazard%2Bscenario%2Bplanning%2Bfor%2BNorthern%2BAustralia%2Bannual%2Bproject%2Breport%2Bp) [141] <https://www.bnhcrc.com.au/publications/biblio/export/bibtex/4687> [142] <https://www.bnhcrc.com.au/publications/biblio/export/xml/4687> [143] <https://www.bnhcrc.com.au/publications/biblio/bnh-5071> [144] <http://dx.doi.org/10.4103/cs.cs.16.156> [145] [http://scholar.google.com/scholar?btnG=Search%2BScholar&as\\_q=%22Towards%2Ban%2BIndigenous%2Becosystem%2Bservices%2Bvaluation%2Bframework%3A%2BA%2Bnorth%2BAustralian%2Bexample%22&as\\_authors=Sangha&as\\_occt=any&as\\_eq=&as\\_oq=&as\\_eq=&as\\_publication=&as\\_ylo=&as\\_yhi=&as\\_sdtAAP=1&as\\_sdtP=1](http://scholar.google.com/scholar?btnG=Search%2BScholar&as_q=%22Towards%2Ban%2BIndigenous%2Becosystem%2Bservices%2Bvaluation%2Bframework%3A%2BA%2Bnorth%2BAustralian%2Bexample%22&as_authors=Sangha&as_occt=any&as_eq=&as_oq=&as_eq=&as_publication=&as_ylo=&as_yhi=&as_sdtAAP=1&as_sdtP=1) [146] <https://www.bnhcrc.com.au/publications/biblio/export/bibtex/5071> [147] <https://www.bnhcrc.com.au/publications/biblio/export/xml/5071> [148] <https://www.bnhcrc.com.au/publications/biblio/bnh-5083> [149] <https://www.bnhcrc.com.au/publications/biblio/bnh-5144> [150] <http://dx.doi.org/10.1002/ecs2.1856> [151] [http://scholar.google.com/scholar?btnG=Search%2BScholar&as\\_q=%22Assessing%2Becological%2Bperformance%2Bthresholds%2Bin%2Bfire%E2%80%99s%2Bprone%2BKakadu%2BNational%2BPark%2C%2BNorthern%2BAustralia%22&as\\_authors=Russell-Smith&as\\_occt=any&as\\_eq=&as\\_oq=&as\\_eq=&as\\_publication=&as\\_ylo=&as\\_yhi=&as\\_sdtAAP=1&as\\_sdtP=1](http://scholar.google.com/scholar?btnG=Search%2BScholar&as_q=%22Assessing%2Becological%2Bperformance%2Bthresholds%2Bin%2Bfire%E2%80%99s%2Bprone%2BKakadu%2BNational%2BPark%2C%2BNorthern%2BAustralia%22&as_authors=Russell-Smith&as_occt=any&as_eq=&as_oq=&as_eq=&as_publication=&as_ylo=&as_yhi=&as_sdtAAP=1&as_sdtP=1) [152] <https://www.bnhcrc.com.au/publications/biblio/export/bibtex/5144> [153] <https://www.bnhcrc.com.au/publications/biblio/export/xml/5144> [154] <https://www.bnhcrc.com.au/publications/biblio/?%5Bauthor%5D=1455> [155] <https://www.bnhcrc.com.au/publications/biblio/bnh-5083> [156] <http://dx.doi.org/10.3390/f8120481> [157] [http://scholar.google.com/scholar?btnG=Search%2BScholar&as\\_q=%22Fire-driven%2Bdecline%2Bof%2Bendemic%2BAllosyncarpia%2Bmonsoon%2Bbrainforests%2Bin%2BNorthern%2BAustralia%22&as\\_authors=Freeman&as\\_occt=any&as\\_eq=&as\\_oq=&as\\_eq=&as\\_publication=&as\\_ylo=&as\\_yhi=&as\\_sdtAAP=1&as\\_sdtP=1](http://scholar.google.com/scholar?btnG=Search%2BScholar&as_q=%22Fire-driven%2Bdecline%2Bof%2Bendemic%2BAllosyncarpia%2Bmonsoon%2Bbrainforests%2Bin%2BNorthern%2BAustralia%22&as_authors=Freeman&as_occt=any&as_eq=&as_oq=&as_eq=&as_publication=&as_ylo=&as_yhi=&as_sdtAAP=1&as_sdtP=1) [158] <https://www.bnhcrc.com.au/publications/biblio/export/bibtex/5083> [159] <https://www.bnhcrc.com.au/publications/biblio/export/xml/5083> [160] <https://www.bnhcrc.com.au/publications/biblio/bnh-4199> [161] [http://scholar.google.com/scholar?btnG=Search%2BScholar&as\\_q=%22Savanna%2Bfire%2Bmanagement%2Band%2BBushfire%2Band%2BNatural%2Bhazard%2Bscenario%2Bplanning%2Bfor%2BNorthern%2BAustralia%2Bannual%2Bproject%2Breport%22&as\\_authors=Russell-Smith&as\\_occt=any&as\\_eq=&as\\_oq=&as\\_eq=&as\\_publication=&as\\_ylo=&as\\_yhi=&as\\_sdtAAP=1&as\\_sdtP=1](http://scholar.google.com/scholar?btnG=Search%2BScholar&as_q=%22Savanna%2Bfire%2Bmanagement%2Band%2BBushfire%2Band%2BNatural%2Bhazard%2Bscenario%2Bplanning%2Bfor%2BNorthern%2BAustralia%2Bannual%2Bproject%2Breport%22&as_authors=Russell-Smith&as_occt=any&as_eq=&as_oq=&as_eq=&as_publication=&as_ylo=&as_yhi=&as_sdtAAP=1&as_sdtP=1) [162] <https://www.bnhcrc.com.au/publications/biblio/export/bibtex/4199> [163] <https://www.bnhcrc.com.au/publications/biblio/export/xml/4199> [164] <https://www.bnhcrc.com.au/publications/biblio/bnh-3115> [165] [http://scholar.google.com/scholar?btnG=Search%2BScholar&as\\_q=%22Savanna%2Bfire%2Bmanagement%2Band%2BBushfire%2Band%2BNatural%2Bhazard%2Bscenario%2Bplanning%2Bfor%2BNorthern%2BAustralia%3A%2Bannual%2Bproject%2Breport%2016%22&as\\_authors=Russell-Smith&as\\_occt=any&as\\_eq=&as\\_oq=&as\\_eq=&as\\_publication=&as\\_ylo=&as\\_yhi=&as\\_sdtAAP=1&as\\_sdtP=1](http://scholar.google.com/scholar?btnG=Search%2BScholar&as_q=%22Savanna%2Bfire%2Bmanagement%2Band%2BBushfire%2Band%2BNatural%2Bhazard%2Bscenario%2Bplanning%2Bfor%2BNorthern%2BAustralia%3A%2Bannual%2Bproject%2Breport%2016%22&as_authors=Russell-Smith&as_occt=any&as_eq=&as_oq=&as_eq=&as_publication=&as_ylo=&as_yhi=&as_sdtAAP=1&as_sdtP=1) [166] <https://www.bnhcrc.com.au/publications/biblio/export/bibtex/3115> [167] <https://www.bnhcrc.com.au/publications/biblio/export/xml/3115> [168] <https://www.bnhcrc.com.au/people/michael-rumsewicz> [169] <https://www.bnhcrc.com.au/publications/researchproceedings2015> [170] [http://scholar.google.com/scholar?btnG=Search%2BScholar&as\\_q=%22Research%2Bproceedings%2Bfrom%2Bthe%2B2015%2BBushfire%2Band%2BNatural%2BHazards%2BRC%2B%26%2BAFAC%2Bconference%22&as\\_authors=Rumsewicz&as\\_occt=any&as\\_eq=&as\\_oq=&as\\_eq=&as\\_publication=&as\\_ylo=&as\\_yhi=&as\\_sdtAAP=1&as\\_sdtP=1](http://scholar.google.com/scholar?btnG=Search%2BScholar&as_q=%22Research%2Bproceedings%2Bfrom%2Bthe%2B2015%2BBushfire%2Band%2BNatural%2BHazards%2BRC%2B%26%2BAFAC%2Bconference%22&as_authors=Rumsewicz&as_occt=any&as_eq=&as_oq=&as_eq=&as_publication=&as_ylo=&as_yhi=&as_sdtAAP=1&as_sdtP=1) [171] <https://www.bnhcrc.com.au/publications/biblio/export/bibtex/2169> [172] <https://www.bnhcrc.com.au/publications/biblio/export/xml/2169> [173] <https://www.bnhcrc.com.au/publications/biblio/bnh-2073> [174] [http://scholar.google.com/scholar?btnG=Search%2BScholar&as\\_q=%22Culturally%2Bappropriate%2Bmapping%2Btools%2Bfor%2Binforming%2Btwo-way%2Bfire%2Bmanagement%2Bplanning%2Bin%2Bremote%2BIndigenous%2BNorthern%2BAustralian%2Bcommunities%2B-peer%2Bviewed%22&as\\_authors=Edwards&as\\_occt=any&as\\_eq=&as\\_oq=&as\\_eq=&as\\_publication=&as\\_ylo=&as\\_yhi=&as\\_sdtAAP=1&as\\_sdtP=1](http://scholar.google.com/scholar?btnG=Search%2BScholar&as_q=%22Culturally%2Bappropriate%2Bmapping%2Btools%2Bfor%2Binforming%2Btwo-way%2Bfire%2Bmanagement%2Bplanning%2Bin%2Bremote%2BIndigenous%2BNorthern%2BAustralian%2Bcommunities%2B-peer%2Bviewed%22&as_authors=Edwards&as_occt=any&as_eq=&as_oq=&as_eq=&as_publication=&as_ylo=&as_yhi=&as_sdtAAP=1&as_sdtP=1) [175] <https://www.bnhcrc.com.au/publications/biblio/export/bibtex/2073> [176] <https://www.bnhcrc.com.au/publications/biblio/export/xml/2073> [177] <https://www.bnhcrc.com.au/publications/biblio/?%5Bauthor%5D=16> [178] <https://www.bnhcrc.com.au/publications/biblio/bnh-3453> [179] <http://dx.doi.org/10.1071/WF14197> [180] [http://scholar.google.com/scholar?btnG=Search%2BScholar&as\\_q=%22Contemporary%2Bfire%2Bregime%2Brisks%2Bto%2Bkey%2Becological%2Bassets%2Band%2Bprocesses%2Bin%2BNorthern%2BAustralian%2BSavannas%22&as\\_authors=Edwards&as\\_occt=any&as\\_eq=&as\\_oq=&as\\_eq=&as\\_publication=&as\\_ylo=&as\\_yhi=&as\\_sdtAAP=1&as\\_sdtP=1](http://scholar.google.com/scholar?btnG=Search%2BScholar&as_q=%22Contemporary%2Bfire%2Bregime%2Brisks%2Bto%2Bkey%2Becological%2Bassets%2Band%2Bprocesses%2Bin%2BNorthern%2BAustralian%2BSavannas%22&as_authors=Edwards&as_occt=any&as_eq=&as_oq=&as_eq=&as_publication=&as_ylo=&as_yhi=&as_sdtAAP=1&as_sdtP=1) [181] <https://www.bnhcrc.com.au/publications/biblio/export/bibtex/3453> [182] <https://www.bnhcrc.com.au/publications/biblio/export/xml/3453> [183] <https://www.bnhcrc.com.au/publications/biblio/bnh-2446> [184] [http://scholar.google.com/scholar?btnG=Search%2BScholar&as\\_q=%22Savanna%2Bfire%2Bmanagement%2Band%2Bscenario%2Bplanning%2Bfor%2BNorthern%2BAustralia%3A%2Bannual%2Bproject%2Breport%2B2014-2015%22&as\\_authors=Russell-Smith&as\\_occt=any&as\\_eq=&as\\_oq=&as\\_eq=&as\\_publication=&as\\_ylo=&as\\_yhi=&as\\_sdtAAP=1&as\\_sdtP=1](http://scholar.google.com/scholar?btnG=Search%2BScholar&as_q=%22Savanna%2Bfire%2Bmanagement%2Band%2Bscenario%2Bplanning%2Bfor%2BNorthern%2BAustralia%3A%2Bannual%2Bproject%2Breport%2B2014-2015%22&as_authors=Russell-Smith&as_occt=any&as_eq=&as_oq=&as_eq=&as_publication=&as_ylo=&as_yhi=&as_sdtAAP=1&as_sdtP=1) [185] <https://www.bnhcrc.com.au/publications/biblio/export/bibtex/2446> [186] <https://www.bnhcrc.com.au/publications/biblio/export/xml/2446> [187] [https://www.bnhcrc.com.au/node/261/generate-pdf?order=field\\_date\\_release&sort=asc](https://www.bnhcrc.com.au/node/261/generate-pdf?order=field_date_release&sort=asc) [188] <https://www.bnhcrc.com.au/node/261/generate-pdf?order=title&sort=asc> [189] <https://www.bnhcrc.com.au/resources/presentation-slideshow/429> [190] <https://www.bnhcrc.com.au/file/521/download?token=bZYfwax> [191] <https://www.bnhcrc.com.au/research/topics/northern-australia> [192] <https://www.bnhcrc.com.au/research/topics/savanna-grasslands> [193] <https://www.bnhcrc.com.au/research/topics/scenario-analysis> [194] <https://www.bnhcrc.com.au/resources/presentation-slideshow/430> [195] [https://www.bnhcrc.com.au/file/522/download?token=1R\\_q-fHo](https://www.bnhcrc.com.au/file/522/download?token=1R_q-fHo) [196] <https://www.bnhcrc.com.au/research/topics/fire> [197] <https://www.bnhcrc.com.au/research/topics/indigenous-communities> [198] <https://www.bnhcrc.com.au/resources/presentation-slideshow/2182> [199] <https://www.bnhcrc.com.au/file/5713/download?token=5A3e8njik> [200] <https://www.bnhcrc.com.au/resources/presentation-audio-video/2473> [201] <https://www.bnhcrc.com.au/file/5928/download?token=2CAGGq2T> [202] <https://www.bnhcrc.com.au/research/topics/resilience> [203] <https://www.bnhcrc.com.au/hazardnotes/14> [204] <https://www.bnhcrc.com.au/file/6006/download?token=DV6EcqbT> [205] <https://www.bnhcrc.com.au/research/topics/land-management> [206] <https://www.bnhcrc.com.au/resources/presentation-audio-video/2575> [207] <https://www.bnhcrc.com.au/file/6034/download?token=OpfjeCh> [208] <https://www.bnhcrc.com.au/resources/presentation-slideshow/3138> [209] <https://www.bnhcrc.com.au/file/6622/download?token=AKZ2E8VZ> [210] <https://www.bnhcrc.com.au/resources/presentation-slideshow/3143> [211] <https://www.bnhcrc.com.au/file/6628/download?token=jawlx0m> [212] <https://www.bnhcrc.com.au/resources/presentation-slideshow/3635> [213] <https://www.bnhcrc.com.au/file/7436/download?token=gFwxQ24W> [214] <https://www.bnhcrc.com.au/resources/presentation-slideshow/3640> [215] <https://www.bnhcrc.com.au/file/7441/download?token=6TWAbdW> [216] <https://www.bnhcrc.com.au/resources/presentation-slideshow/3650> [217] <https://www.bnhcrc.com.au/file/7452/download?token=f4DyEnQA> [218] <https://www.bnhcrc.com.au/resources/presentation-slideshow/3752> [219] <https://www.bnhcrc.com.au/file/7564/download?token=YoxKxo64> [220] <https://www.bnhcrc.com.au/research/topics/communities> [221] <https://www.bnhcrc.com.au/resources/presentation-slideshow/4182> [222] <https://www.bnhcrc.com.au/file/7959/download?token=enEu8Kc> [223] <https://www.bnhcrc.com.au/research/topics/mitigation> [224] <https://www.bnhcrc.com.au/hazardnotes/46> [225] <https://www.bnhcrc.com.au/file/8136/download?token=TpEMy5St> [226] <https://www.bnhcrc.com.au/research/topics/fire-severity> [227] <https://www.bnhcrc.com.au/resources/presentation-slideshow/4536> [228] <https://www.bnhcrc.com.au/file/8197/download?token=tmzWL3Mf> [229] <https://www.bnhcrc.com.au/research/topics/multi-hazard> [230] <https://www.bnhcrc.com.au/resources/fireaustralia-edition/4608> [231] <https://www.bnhcrc.com.au/file/8291/download?token=KIBXzVEW> [232] <https://www.bnhcrc.com.au/research/topics/decision-making> [233] <https://www.bnhcrc.com.au/research/topics/emergency-management> [234] <https://www.bnhcrc.com.au/resources/presentation-slideshow/5119> [235] <https://www.bnhcrc.com.au/file/9196/download?token=GQmiHJUO> [236] <https://www.bnhcrc.com.au/research/topics/fire-weather> [237] <https://www.bnhcrc.com.au/resources/presentation-audio-video/6103> [238] <https://www.bnhcrc.com.au/file/10527/download?token=xh6-nsZE> [239] <https://www.bnhcrc.com.au/research/topics/framework> [240] <https://www.bnhcrc.com.au/resources/presentation-slideshow/6139> [241] <https://www.bnhcrc.com.au/file/10563/download?token=9Ualtz9> [242] <https://www.bnhcrc.com.au/resources/external-resource/6846> [243] <https://www.bnhcrc.com.au/file/11220/download?token=d1LZv7x> [244] <https://www.bnhcrc.com.au/resources/presentation-audio-video/6896> [245] <https://www.bnhcrc.com.au/file/11314/download?token=Btm0ATTo> [246] <https://www.bnhcrc.com.au/research/topics/fire-impacts>