



Department of Environment and Water, South Australia [1]  
[HTTP://WWW.ENVIRONMENT.SA.GOV.AU/HOME](http://www.environment.sa.gov.au/home) [2]

The Department of Environment and Water provides advice to government, industry and communities to achieve productive and balanced use of natural resources and to help improve the condition and resilience of our natural systems. The issues it works on include water security, climate change, sustainable land management, public estate management and biodiversity conservation.

## Our people



[3]  
**Lisa Arcoverde**  
[3]



[4]  
**Doug Fotheringham**  
[4]  
END-USER



[5]  
**Aidan Galpin**  
[5]  
END-USER



[6]  
**Tim Groves**  
[6]  
END-USER



[7]  
**James Guy**  
[7]  
END-USER



[8]  
**Mr David McKenna**  
[8]  
END-USER



[9]

**Faye Morten**  
[9]  
END-USER



[10]

**Ed Pikusa**  
[10]  
END-USER



[11]

**Simeon Telfer**  
[11]  
END-USER



[12]

**Mike Wouters**  
[12]  
END-USER

## End user representation

### Hazards, culture and Indigenous communities [13]



[5]

**Aidan Galpin**  
[5]  
END-USER



[12]

**Mike Wouters**  
[12]  
END-USER

### Urban planning for natural hazard mitigation [14]



[5]

**Aidan Galpin**  
[5]  
END-USER



[10]

**Ed Pikusa**  
[10]  
END-USER

### Economics of natural hazards [15]

## Resilience to clustered disaster events

[12]



**Mike Wouters**  
[12]  
END-USER

[6]



**Tim Groves**  
[6]  
END-USER

[10]



**Ed Pikusa**  
[10]  
END-USER

[12]



**Mike Wouters**  
[12]  
END-USER

## on the coast - storm surge [16]

[7]



**James Guy**  
[7]  
END-USER

## Developing better predictions for extreme water levels [17]

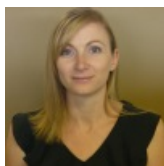
[7]



**James Guy**  
[7]  
END-USER

## Diversity and inclusion: building strength and capability [18]

[9]



**Faye Morten**  
[9]  
END-USER

## Using realistic disaster scenario analysis to understand natural hazard impacts and emergency management requirements [19]

## Improved decision support for natural

[10]



**Ed Pikusa**  
[10]  
END-USER

hazard risk reduction [20]

[10]



**Ed Pikusa**  
[10]  
END-USER

[12]



**Mike Wouters**  
[12]  
END-USER

Policies, institutions and governance [21]

[10]



**Ed Pikusa**  
[10]  
END-USER

Catastrophic and cascading events:  
planning and capability [22]

[10]



**Ed Pikusa**  
[10]  
END-USER

Scientific diversity and uncertainty in risk mitigation policy and planning [23]

[10]



**Ed Pikusa**  
[10]  
END-USER

Improved calibration of spatially  
distributed models to simulate disaster  
risk [24]

[10]



**Ed Pikusa**  
[10]  
END-USER

Optimising post-disaster recovery interventions in Australia [25]

Mapping and understanding bushfire and natural hazard vulnerability and risks at the institutional scale [26]

[10]



**Ed Pikusa**  
[10]  
END-USER

[10]



**Ed Pikusa**  
[10]  
END-USER

Mapping bushfire hazard and impacts [27]

[11]



**Simeon Telfer**  
[11]  
END-USER

Fire surveillance and hazard mapping [28]

[11]



**Simeon Telfer**  
[11]  
END-USER

Threshold conditions for extreme fire behaviour [29]

[12]



**Mike Wouters**  
[12]  
END-USER

Fire spread prediction across fuel types [30]

[12]



**Mike Wouters**  
[12]  
END-USER

Preparing emergency services for operations in a climate-challenged world [31]

multi-team environments [32]

Improving decision-making in complex

From hectares to tailor made solutions



[12]

**Mike Wouters**  
[12]  
END-USER



[12]

**Mike Wouters**  
[12]  
END-USER

for risk mitigation [33]



[12]

**Mike Wouters**  
[12]  
END-USER

Black Summer bushfires: South Australia reconstructions [34]



[12]

**Mike Wouters**  
[12]  
END-USER

Coupled fire-atmosphere modelling [35]



[12]

**Mike Wouters**  
[12]  
END-USER

Modelling fire weather interactions using the ACCESS-Fire model [36]



[12]

**Mike Wouters**  
[12]  
END-USER

**Source URL:**<https://www.bnhcrc.com.au/node/292/generate-pdf>

#### Links

[1] <https://www.bnhcrc.com.au/organisations/dewnr> [2] <http://www.environment.sa.gov.au/Home> [3] <https://www.bnhcrc.com.au/people/larcoverde> [4] <https://www.bnhcrc.com.au/people/dfotheringham> [5] <https://www.bnhcrc.com.au/people/agalpin> [6] <https://www.bnhcrc.com.au/people/tgroves> [7] <https://www.bnhcrc.com.au/people/iguy> [8] <https://www.bnhcrc.com.au/people/dmckenna> [9] <https://www.bnhcrc.com.au/people/fmorten> [10] <https://www.bnhcrc.com.au/people/epikusa> [11] <https://www.bnhcrc.com.au/people/stelfer> [12] <https://www.bnhcrc.com.au/people/mwouters> [13] <https://www.bnhcrc.com.au/research/indigenouscommunities> [14] <https://www.bnhcrc.com.au/research/urbanplanning> [15] <https://www.bnhcrc.com.au/research/naturalhazardeconomics> [16] <https://www.bnhcrc.com.au/research/stormsurge> [17]

<https://www.bnhcrc.com.au/research/waterlevels> [18] <https://www.bnhcrc.com.au/research/diversityinclusion> [19]  
<https://www.bnhcrc.com.au/research/disastersscenarioanalysis> [20] <https://www.bnhcrc.com.au/research/riskreduction> [21]  
<https://www.bnhcrc.com.au/research/governance> [22] <https://www.bnhcrc.com.au/research/catastrophic> [23]  
<https://www.bnhcrc.com.au/research/scientificdiversity> [24] <https://www.bnhcrc.com.au/research/policy-and-economics-hazards/1069> [25]  
<https://www.bnhcrc.com.au/research/postdisastereconomics> [26] <https://www.bnhcrc.com.au/research/vulnerabilityandrisk> [27]  
<https://www.bnhcrc.com.au/research/bushfireimpacts> [28] <https://www.bnhcrc.com.au/research/firesurveillance> [29]  
<https://www.bnhcrc.com.au/research/extremefirebehaviour> [30] <https://www.bnhcrc.com.au/research/firespread> [31]  
<https://www.bnhcrc.com.au/research/understanding-and-mitigating-hazards/8023> [32]  
<https://www.bnhcrc.com.au/research/multi-team-environments> [33] <https://www.bnhcrc.com.au/research/risk-mitigation-solutions> [34]  
<https://www.bnhcrc.com.au/research/understanding-and-mitigating-hazards/7940> [35] <https://www.bnhcrc.com.au/research/coupled-fire> [36]  
<https://www.bnhcrc.com.au/research/understanding-and-mitigating-hazards/7923>