



UNHaRMED

Accounting for society's influence on future disaster risk and how to develop proactive risk management strategies through integrated dynamic risk assessments

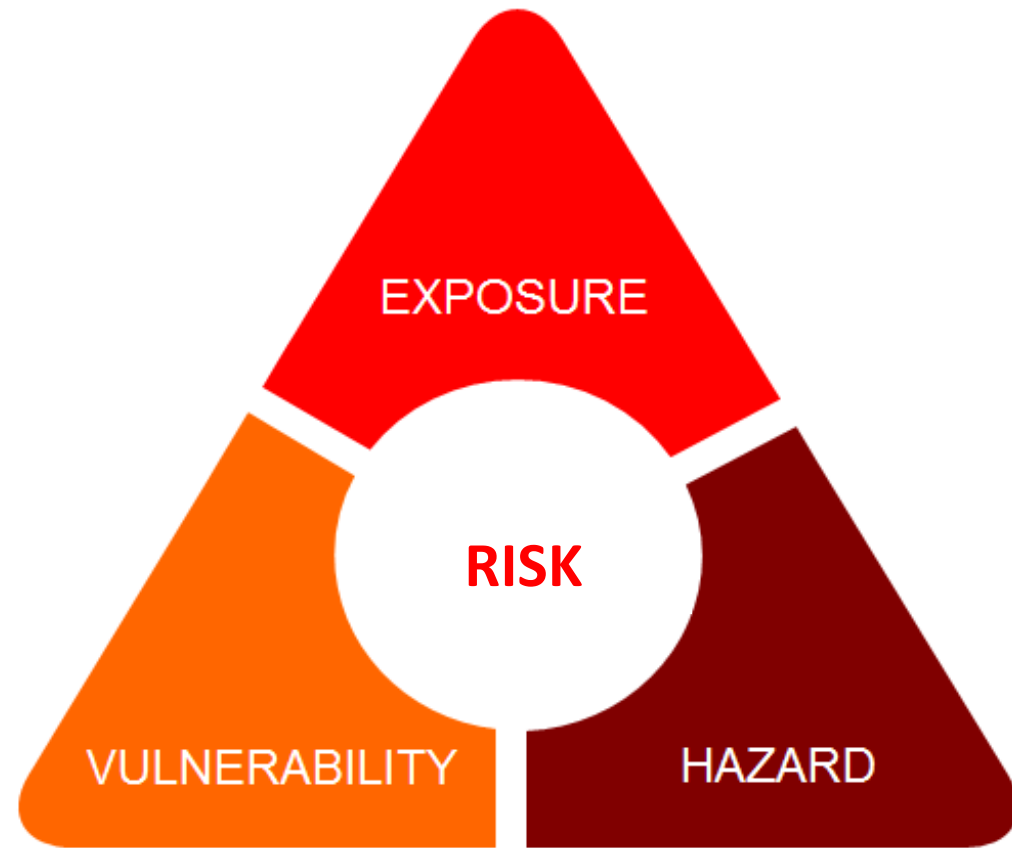
ANHMC 2019

Holger R Maier/ The University of Adelaide

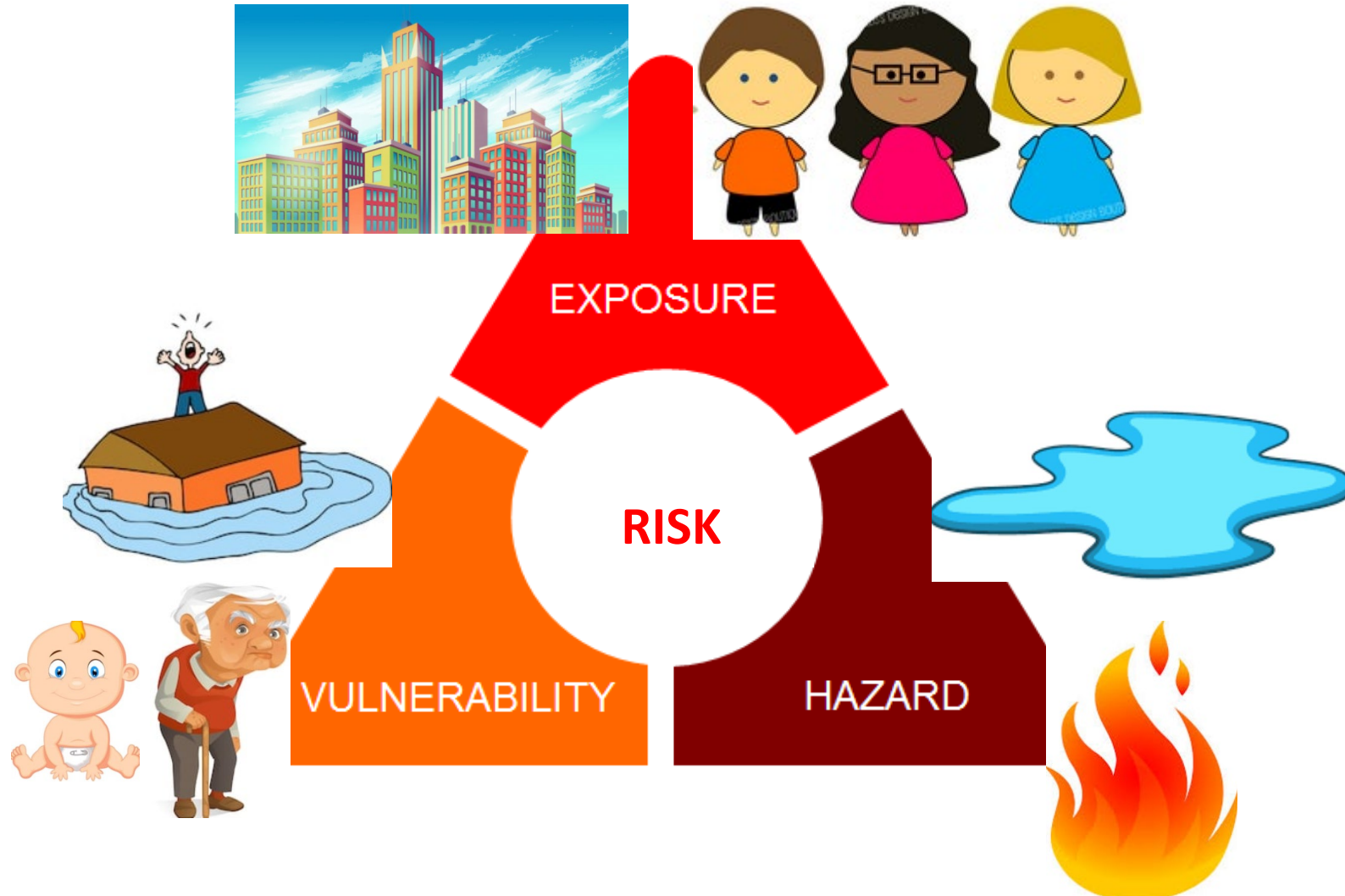
Graeme Riddell, Hedwig van Delden, Roel Vanhout, James Daniell, Sofanit Araya, Aaron Zecchin, Graeme Dandy, Jeff Newman



Risk

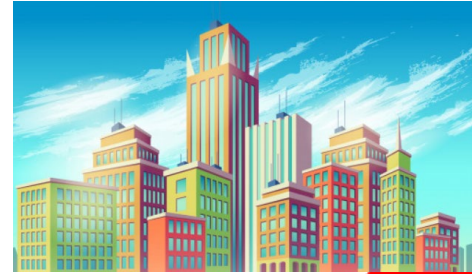


2020



2035

More people and assets



EXPOSURE

RISK

VULNERABILITY

HAZARD

More older people



More severe floods
More severe fires



2035

More people and assets



EXPOSURE

RISK

VULNERABILITY

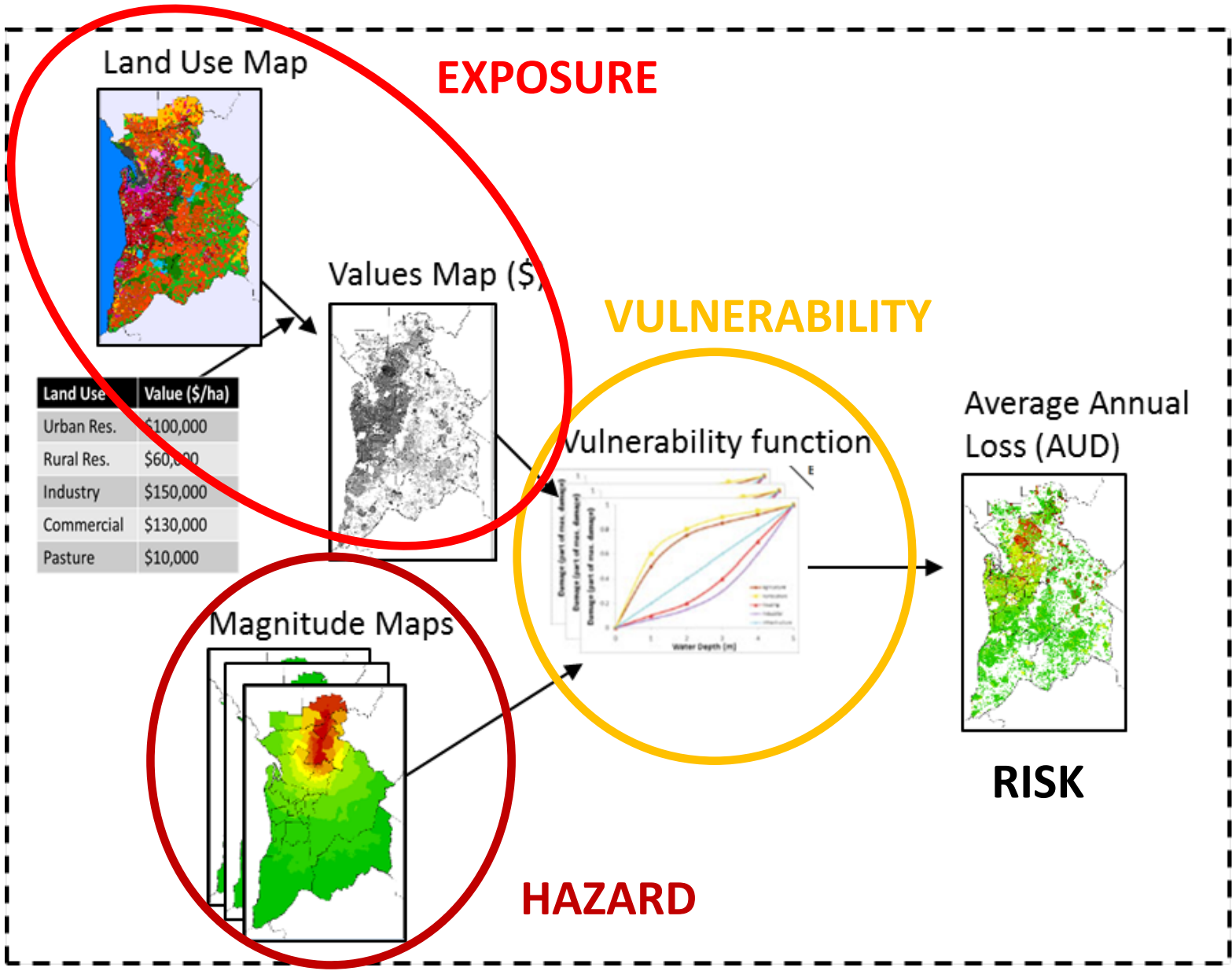
HAZARD

More older people



More severe floods
More severe fires





Catastrophe Risk Model:

- Bushfire
- Earthquake
- Riverine flooding
- Coastal inundation
- (Heatwave)

Impact Assessment:

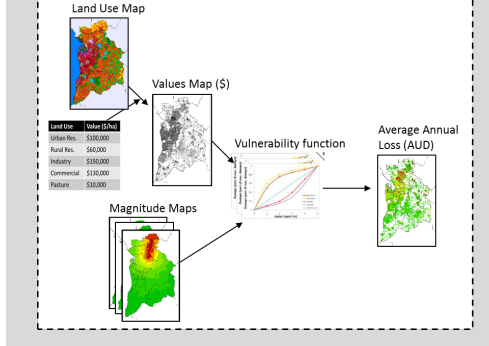
- Average annual loss
- Impact categories (NERAG)

Mitigation Options:

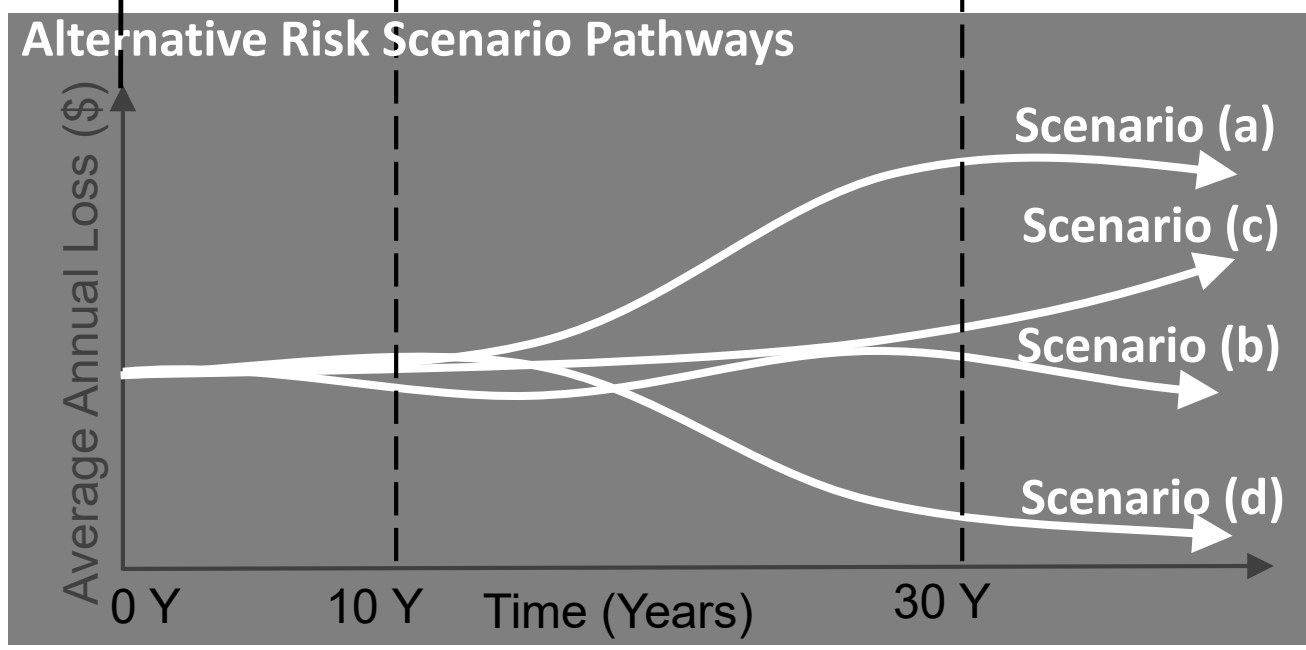
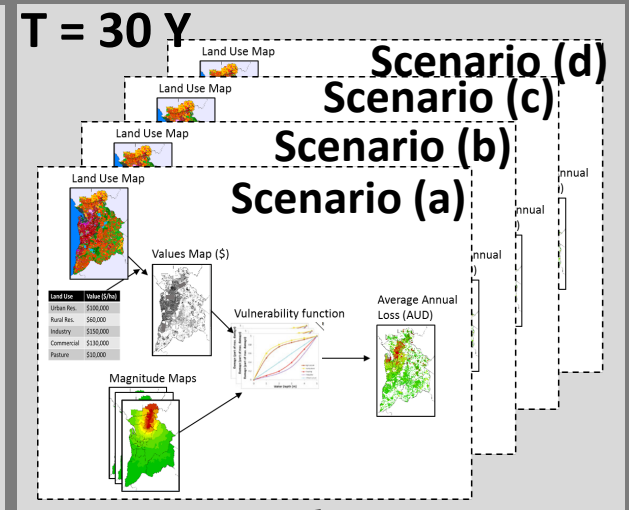
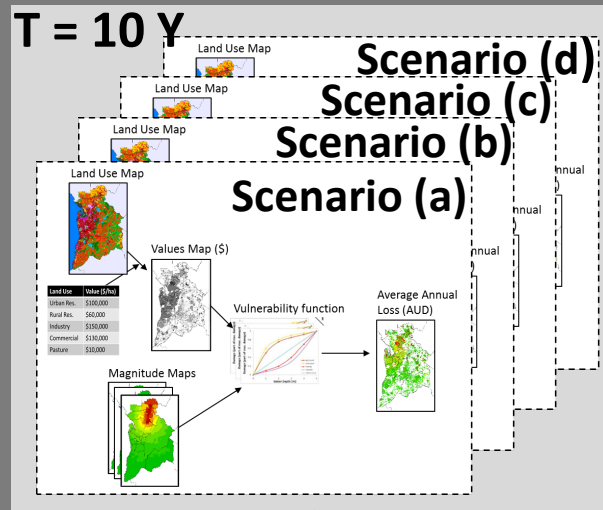
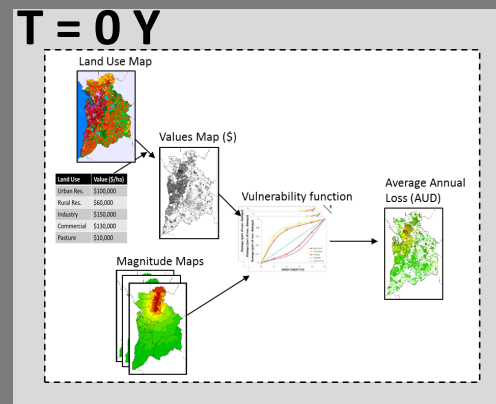
- Prescribed burns
- Seawalls
- Land use planning
- Building code
- ...

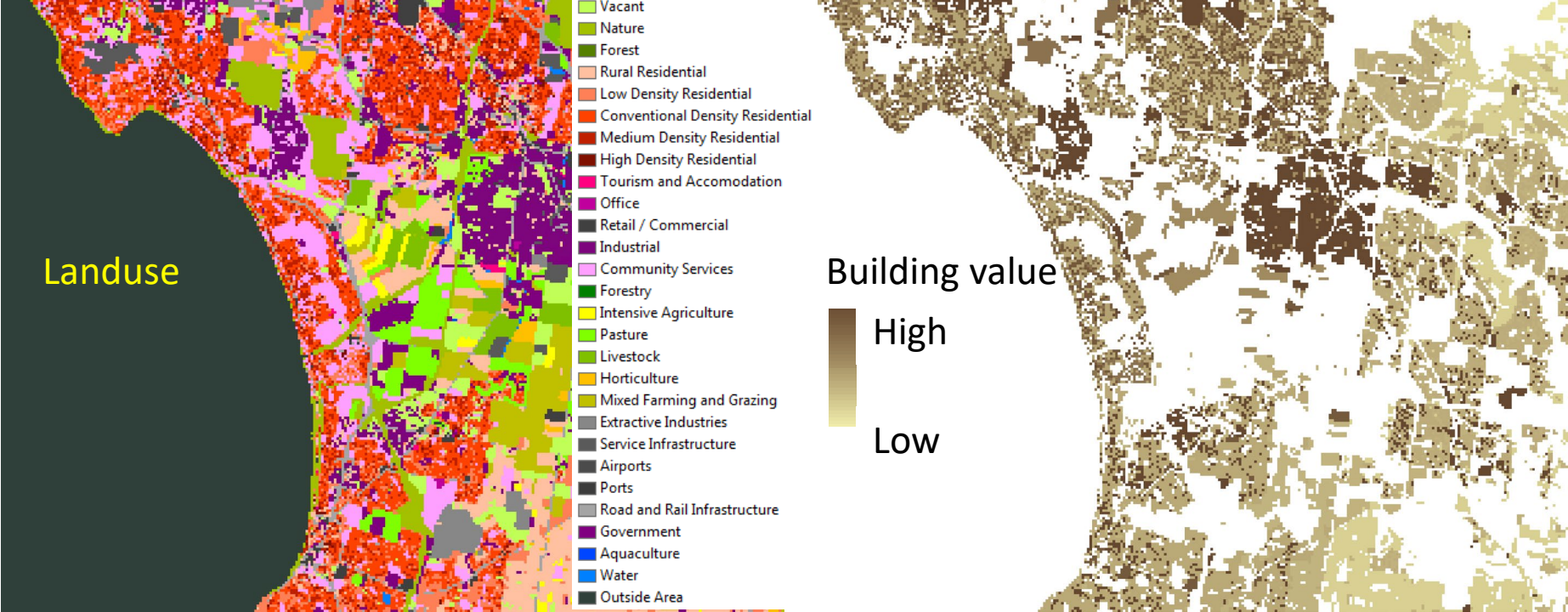


T = 0 Y



Future Scenarios





2015

