



bushfire&natural  
**HAZARDS**CRC

# Evidenced based capability maturity assessment for severe to catastrophic events

**ANDREW GISSING, MICHAEL EBURN**  
Risk Frontiers  
Macquarie University  
Australian National University

© BUSHFIRE AND NATURAL HAZARDS CRC 2015

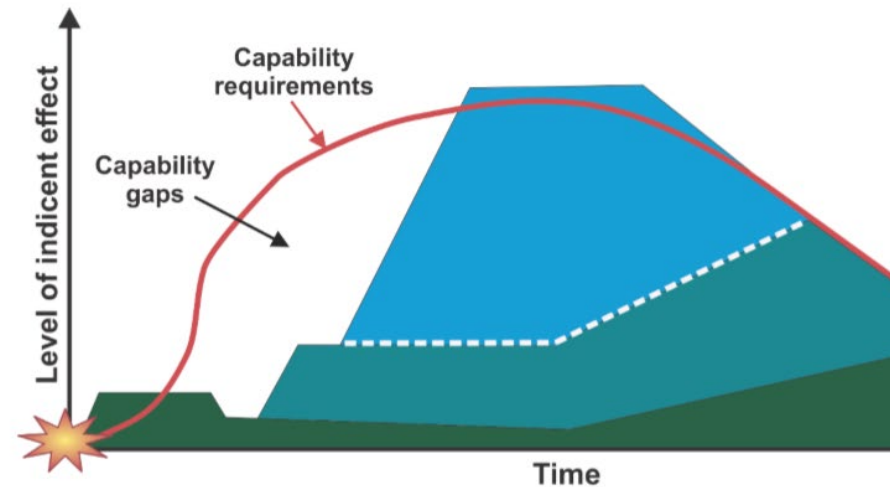
# INTRODUCTION



Darwin 1974

# CAPABILITY MATURITY ASSESSMENT

- A process to be utilised to measure the current state of capability to identify priority areas for further effort
- Based on defined core capabilities and capability elements from national framework
- Scenario based



# THE TOOL

- First pass assessment of capability based on a maturity matrix
- Matrix based around 5 core capability elements
- Detailed analysis can then be targeted to areas of higher priority
- Enables a consistent and evidence based assessment



## Planning

**Preparedness**  
 The ability to establish a plan for and implement available resources, practical and technical level approaches to dealing with natural hazards. National Principles for Disaster Recovery, being: national recovery, community resilience, community preparedness, coordination of activities, communication effectiveness, knowledge and building capacity, should be considered throughout the



Element	Maturity Level - Collective Capability				Notes
	1 - Informal	2 - Developing	3 - Established	4 - Self-maintaining	
People	Individuals trained, resources and skilled personnel available	Individuals trained, resources and skilled personnel available, resources available and coordinated with a strategic plan to achieve sufficient capacity	Individuals trained, resources and skilled personnel available, resources available and coordinated with a strategic plan to achieve sufficient capacity	Number of trained, resources and skilled personnel available, resources available and coordinated with a strategic plan to achieve sufficient capacity	Use operational or emergency response plans
People	Responsibility for emergency response has not been considered	Responsibility for emergency response is considered and allocated for major emergencies	Responsibility for emergency response is demonstrated in plans but not allocated for major emergencies	Responsibility for emergency response is demonstrated in plans, regularly exercised and operated effectively during major emergencies where needed	
People	Capacity building pathways are informal	Capacity building pathways are operational specific	Collective capacity building pathways exist but are reactive	Collective capacity building pathways are strategic, proactive and operating effectively. Culture of working as one is embedded.	
Resource	Individual resources available, however, capability levels are not linked and not coordinated with strategic plans to achieve sufficient capacity	Individual resources available, however, capability levels are not linked and not coordinated with strategic plans to achieve sufficient capacity	Individual resources available, however, capability levels are not linked and not coordinated with strategic plans to achieve sufficient capacity	Individual resources available, however, capability levels are not linked and not coordinated with strategic plans to achieve sufficient capacity	
Resource	Responsibility for emergency response has not been considered	Responsibility for emergency response is considered and allocated for major emergencies	Responsibility for emergency response is demonstrated in plans but not allocated for major emergencies	Responsibility for emergency response is demonstrated in plans, regularly exercised and operated effectively during major emergencies where needed	
Resource	Resource capacity building pathways are informal	Resource capacity building pathways are operational specific	Collective resource capacity building pathways exist but are reactive	Collective resource capacity building pathways are strategic, proactive and operating effectively	
Resource	Rules and responsibilities are not defined	Rules and responsibilities are not consistently defined	Rules and responsibilities are not consistently defined	Rules and responsibilities are consistently well defined	
Resource	No specific preparedness planning, monitoring, risk management and reporting	Specific preparedness planning, monitoring, risk management and reporting	Collective preparedness planning, monitoring and reporting are established	Collective preparedness planning, monitoring and reporting is effectively coordinated	
Resource	Resource capabilities are limited and inconsistent	Resource capabilities are operational specific and linked to preparedness	Resource capabilities are operational specific and linked to preparedness	Resource capabilities are operational specific and linked to preparedness	
Resource	Power transfer is not defined	Power transfer is not defined	Power transfer is not defined	Power transfer is not defined	
System	System is not defined, specific to building and has not been operational	System is not defined, specific to building and has not been operational	System is not defined, specific to building and has not been operational	System is not defined, specific to building and has not been operational	

# RESULTS DASHBOARDS

- Reporting features designed for senior management consumption
- Can be further customised
- Results guide priorities to identify additional sources of capability

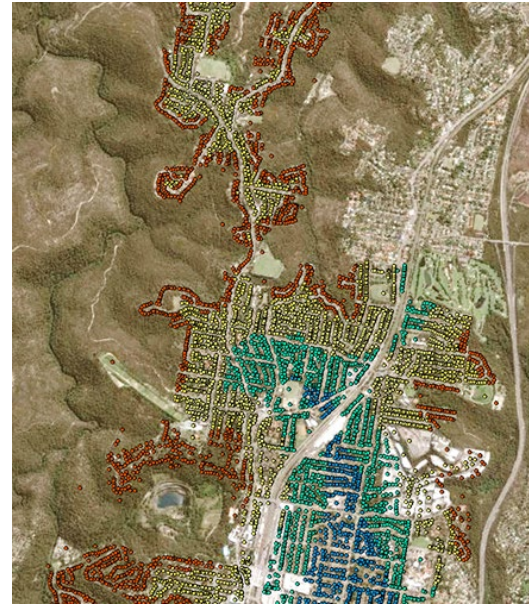
## People

#	Core Capabilities	Capability Element Average
1	Planning	3
2	Search And Rescue	2
3	Warnings And Information	2.333333333
4	Fatality Management	2
5	Civil Disaster Expansion	2
6	Public Order And Community Safety	2
7	Evacuation And Support	1.333333333
8	Mass Care	3
9	Intelligence and Situational Awareness	2.333333333
10	Responder Protection And Sustainment	2
11	Built Environment And Infrastructure Recovery	2
12	Logistics And Supply Chain Management	1.666666667
13	Impact Assessment	1.333333333
14	Hazard Response	4
15	Economic Recovery	3
16	Natural Environment Recovery	2
17	Biosecurity	2.666666667
18	Social Recovery	2
19	Crisis Leadership and Management	2
20	Research And Learning	3
21	Community Planning, Capability And Resilience Building	2.333333333



# POSSIBLE IMPLEMENTATION APPROACH

- Develop severe to catastrophic scenarios
- Determine capability leaders
- Capability leaders to coordinate assessment utilising to the tool
- Central coordinator collates results
- All agency workshops to validate results
- Reporting, planning and decision making





# SUMMARY

- Easy to use
- Aligns with National Preparedness Framework
- Complementary to more detailed analytical approaches
- Will generate planning discussion
- Will inform decision making, action planning and prioritisation
- Can be embedded into continual preparedness reporting processes



# INTERESTED IN UTILISATION?

Contact us:

[andrew.gissing@riskfrontiers.com](mailto:andrew.gissing@riskfrontiers.com)