



bushfire&natural  
**HAZARDS**CRC

# NATURAL HAZARD EXPOSURE INFORMATION MODELLING FRAMEWORK

**Dr Krishna Nadimpalli**

Geoscience Australia, Canberra



An Australian Government Initiative



Australian Government  
Geoscience Australia



UNIVERSITY OF  
CANBERRA



THE UNIVERSITY OF  
MELBOURNE

# PROJECT TEAM

Research Manager:	Michael Rumsewicz, BNHCRC
Lead User Representative:	Leesa Carson, GA Ralph Smith, WA-DFES
Lead Researcher:	Michael Griffith, Uni. of Adelaide
Project Leader:	Krishna Nadimpalli, GA
Research Team:	Itismita Mohanty, Uni. Of Canberra Abbas Rajabifard, Uni. Of Melbourne Mohsen Kalantari, Uni. Of Melbourne Yogi Vidyattama, Uni. Of Canberra
End Users:	Elliott Simons, NSW-SES Shane Turner, SA-DPTI Corey Shackleton, NSW-Rural Fire Service Greg Howard, SA Metropolitan Fire Service Matt Hayne, AGD Greg Buckley, NSW Fire & Rescue

# PROBLEM STATEMENT

- Government, researchers and industry often do not have the data and information they need to make critical, strategic and operational decisions.
- There is a clear expectation that policy and practice will be based on evidence supported by knowledge including data and information. Currently, this expectation is not consistently met.
- The data that is collected is not in a clear, coherent and accessible platform that supports government, agencies, stakeholders and partners in decision-making, monitoring, evaluation, reporting, research and improvement.

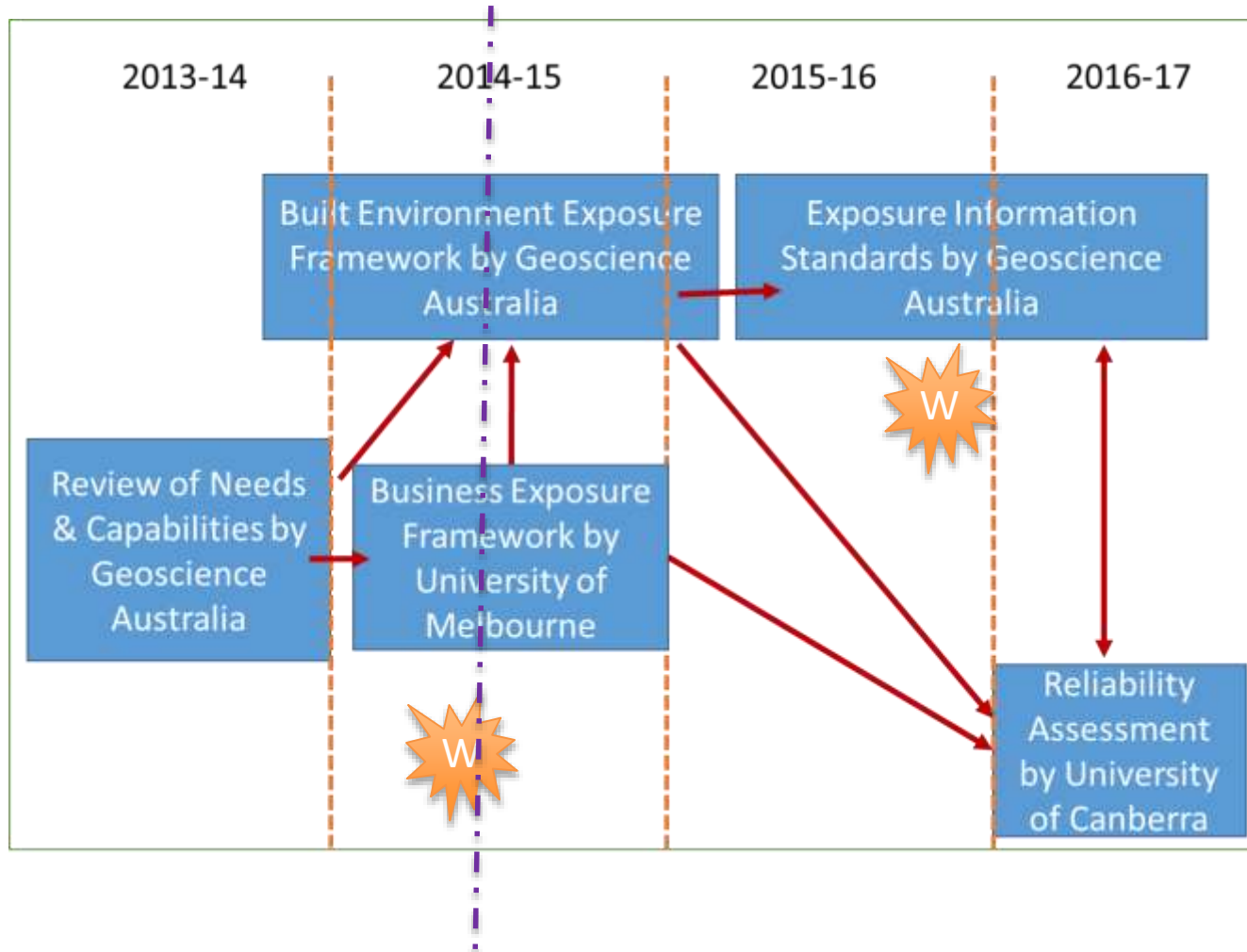
# RESEARCH OBJECTIVE

To develop a nationally consistent exposure information framework that *enables more robust, reliable and operational* capabilities to address disaster preparedness, planning, response and recovery for all levels of government (local, state and federal), industry and research.

# RESEARCH TASKS

- 1) To develop a built environment exposure information framework consists of buildings, infrastructure and population
- 2) To develop a business exposure framework to assess the business continuity, disruption, resilience and recovery
- 3) To develop national standards and data dictionaries for the exposure information to ensure consistency
- 4) To develop exposure data reliability assessment framework to assist the understanding of data reliability for various uses

# PROJECT TIMELINE



# TASK PROGRESS – LITERATURE REVIEW

## International

- Hygo Framework,
- Global Exposure Database Framework,
- Global Assessment Report (GAR),
- NIST-Disaster Resilience Workshops,
- Integrated Risk Information System & Airborne Chemical Exposure
- RiskScape – NIWA, New Zealand
- Land Use in Rural New Zealand
- Pacific Exposure Database
- Open Street Map
- Population Dynamics, Oakridge National Laboratories,

## Australia

- NRAG
- National Exposure Information System (NEXIS), GA
- Emergency Management Information Development Plan, ABS
- Queensland Disaster Management Plan
- Victorian Government Risk Management Framework
- Land Use of Australia, ABARE – BRS
- Energy Efficiency Reports

# TASK PROGRESS - EXISTING CAPABILITIES REVIEW

## Online Survey

### Objectives

- To assess authoritative data and information capabilities that support emergency management decision making
- To review current practices and perform a gap analysis for future emergency planning, preparation, response and recovery activities
- to develop strategies to develop nationally consistent, robust, reliable and sustainable exposure information capabilities in Australia.

### Participants (Invited 30 organisations)

- 30 organisations Invited & 18 Responded
- Federal – GA, ABS, AMSA
- States – EICU, NSW SES, TAS-DPI, ACT-SG, VIC-SES, SA-DEWNR, WA-Landgate, WA-DFES, QLD-DNRM,
- Industry – PSMA, ACTEW, WillisRe
- Research – University of Melbourne Deakin Uni.,



# TASK PROGRESS - EXISTING CAPABILITIES REVIEW

## Highlights

- No agency is managing exposure data with national coverage consistently
- GA – NEXIS has a statistical version on buildings and population, location information for some infrastructure data available
- NSW EICU – Comprehensive for Sydney and location information of infrastructure for other areas in NSW.
- State Spatial organisations have location information for infrastructure
- State Emergency Management Organisations has some level of information
- Researchers have no fundamental information to provide for disaster management

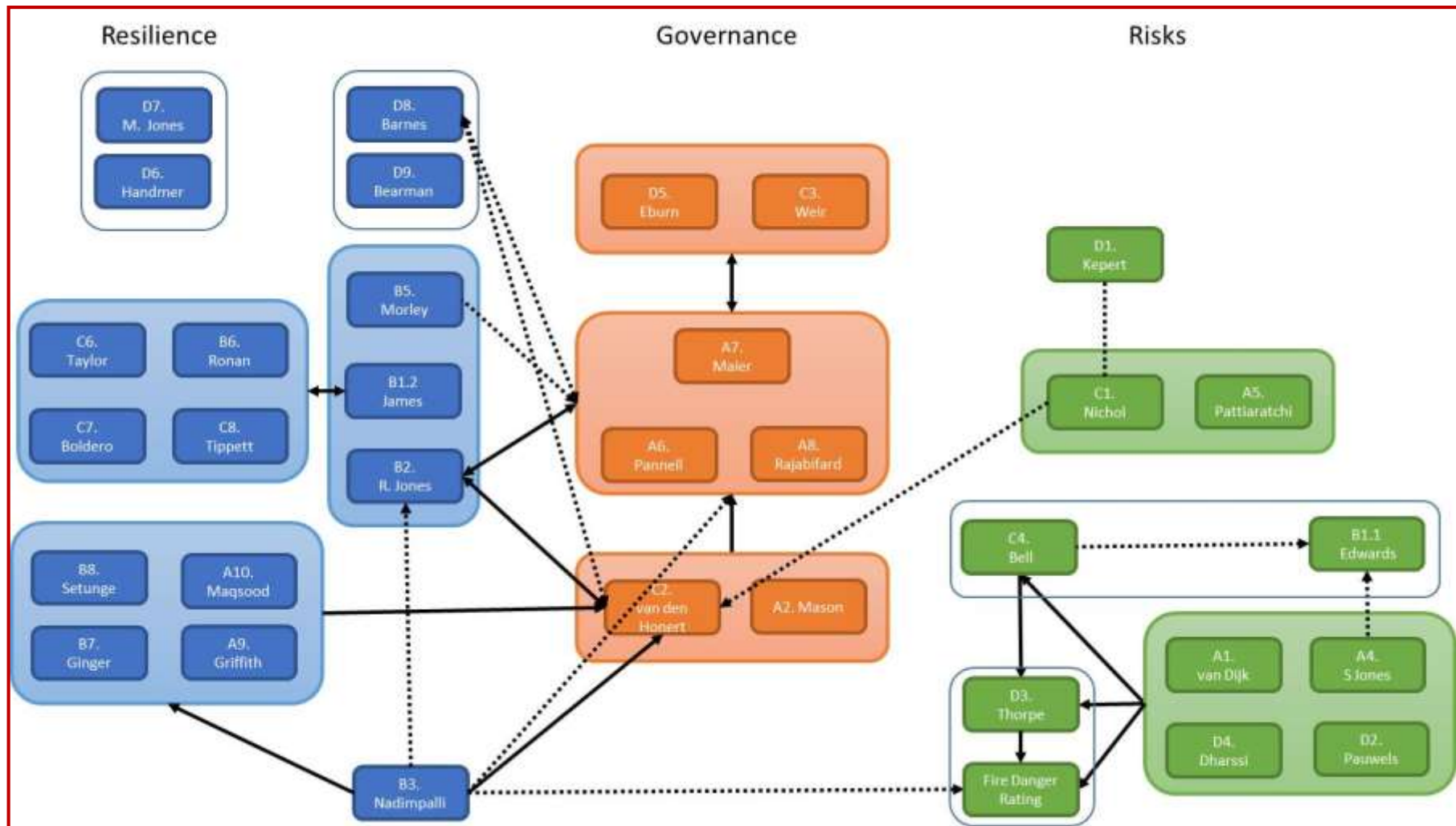
## Gaps

- No agency is managing comprehensive exposure data for national coverage consistently

## TASK PROGRESS – EXPOSURE WORKSHOP

- 1) First workshop convened 2<sup>nd</sup> December.
- 2) 35 participants (research, government, EM, industry).
- 3) Objective to capture high level business needs and exposure information requirements for:
  - Buildings and demographics
  - Infrastructure
  - Business exposure
- 4) Workshop proceedings to be published in March 2015 and findings incorporated in framework.
- 5) Represents commencement of stakeholder engagement. This will entail follow-up with workshop participants and engagement within the CRC of project with exposure information requirements. Specific need to formally engage with social science community.

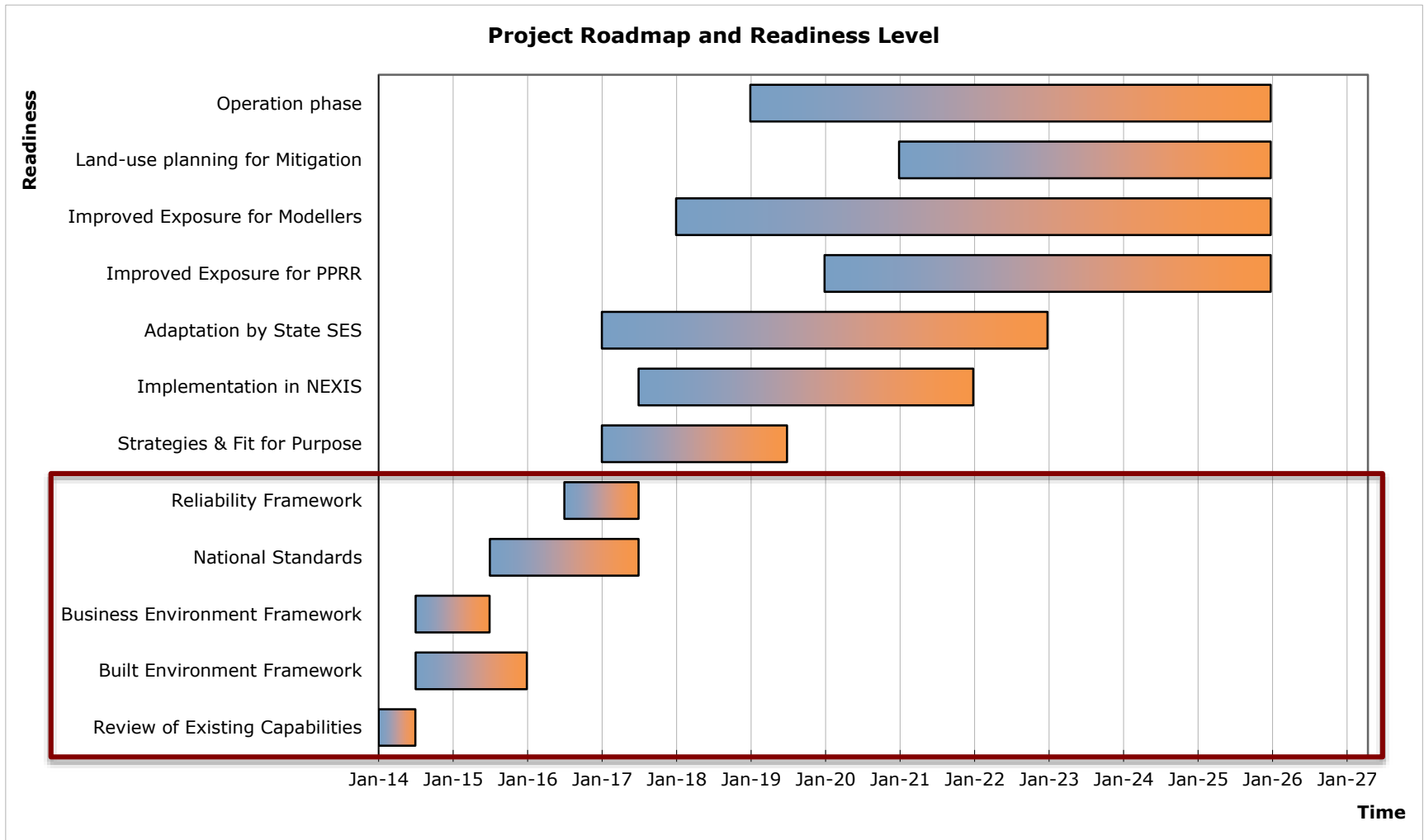
# LINKAGES TO BNHCRC PROJECTS



# RESEARCH OUTCOMES SOUGHT

- 1) Underpinning of vulnerability assessments for disaster risk reduction and socio-economic impact analysis to support policy development.
- 2) Robust, Reliable and Sustainable exposure information capabilities - population, buildings assets, essential infrastructure and associated activities exposed to natural hazards.
- 3) Pathways to enable location based exposure information capabilities to be transitioned into federated data distribution networks with open access for use at national, state and local government levels.

# OUTCOMES – ROAD MAP



# SUMMARY

- 1) Research program on track.
- 2) Engagement has commenced with a successful workshop. There is a need to explore further engagement with social science community to better capture their needs.
- 3) Linkages will be sought with other CRC projects that have exposure information needs to capture these in the framework.

# THANKYOU

**Phone:** +61 2 6249 9732

**Web:** [www.ga.gov.au](http://www.ga.gov.au)

**Email:** [Krishna.Nadimpalli@ga.gov.au](mailto:Krishna.Nadimpalli@ga.gov.au)

**Address:** Cnr Jerrabomberra Avenue and Hindmarsh Drive, Symonston ACT 2609

**Postal Address:** GPO Box 378, Canberra ACT 2601