



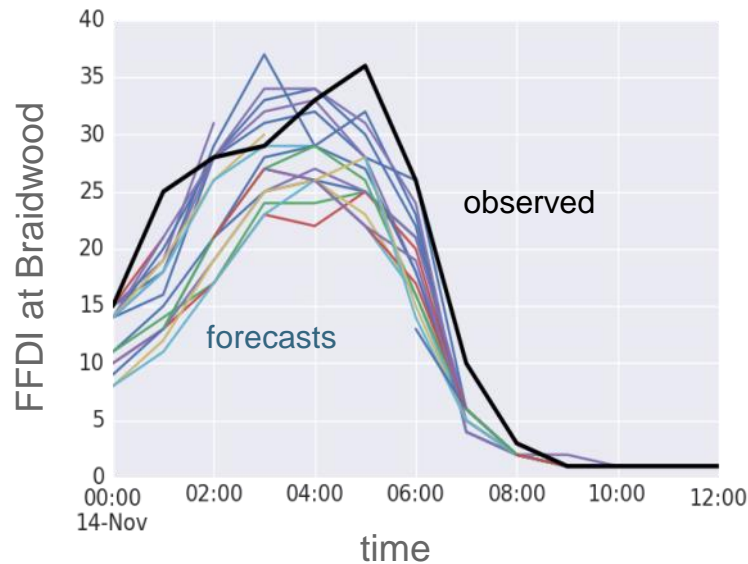
Australian Government

Bureau of Meteorology

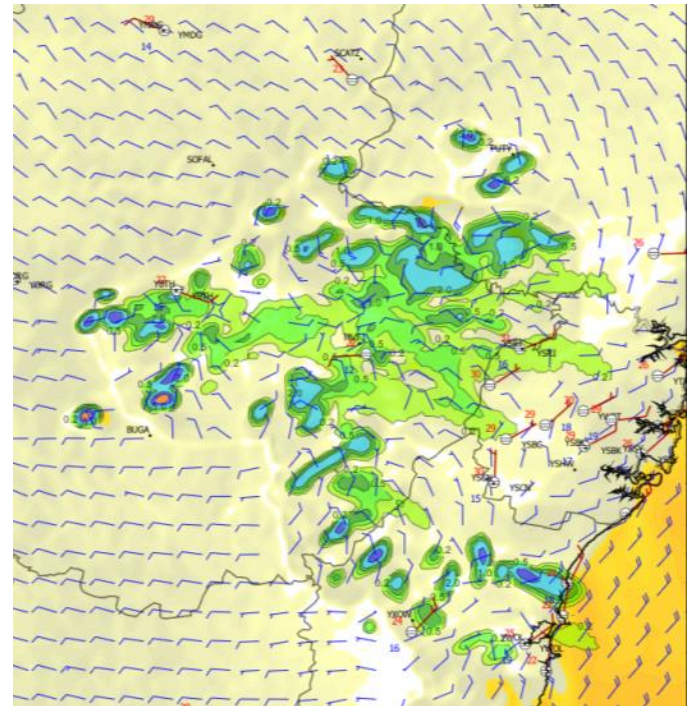
Sydney 2014 Forecast Demonstration Project – A Step from Research to Operations

Michael Foley m.foley@bom.gov.au

Mika Peace m.peace@bom.gov.au



and
Jeff Kepert,
Deryn Griffiths,
James Sofra,
Simon Louis,
David Smith,
Alan Wain,
Beth Ebert,
Peter Steinle,
Aurora Bell,
Alan Seed

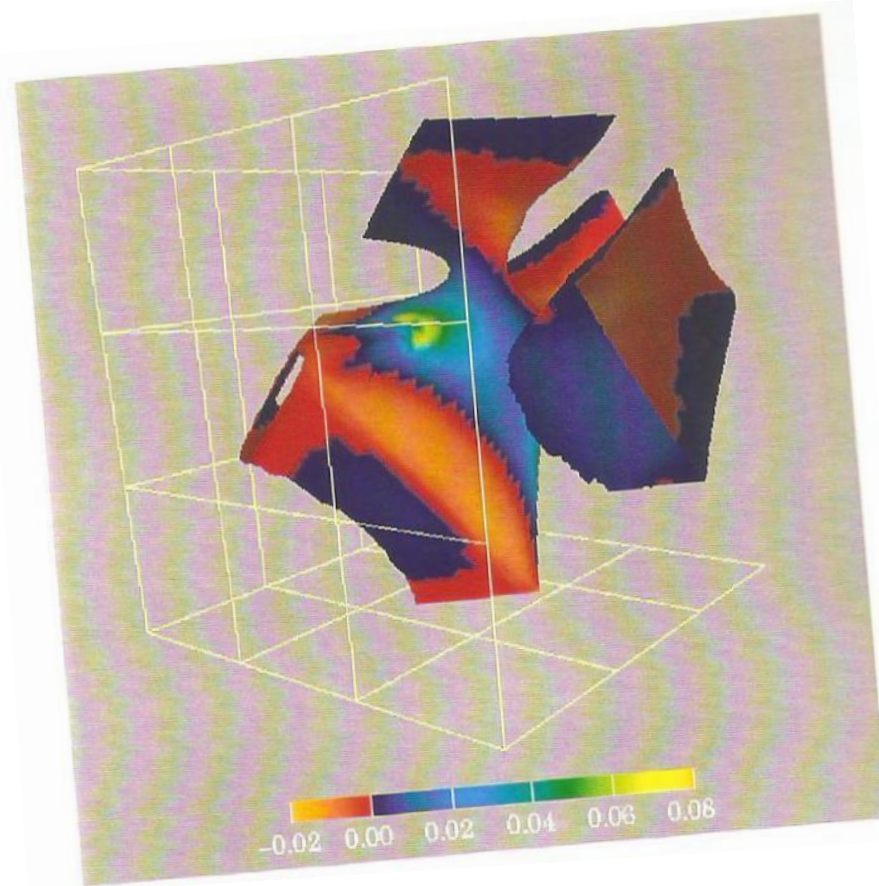




Australian Government

Bureau of Meteorology

Research to Operations...

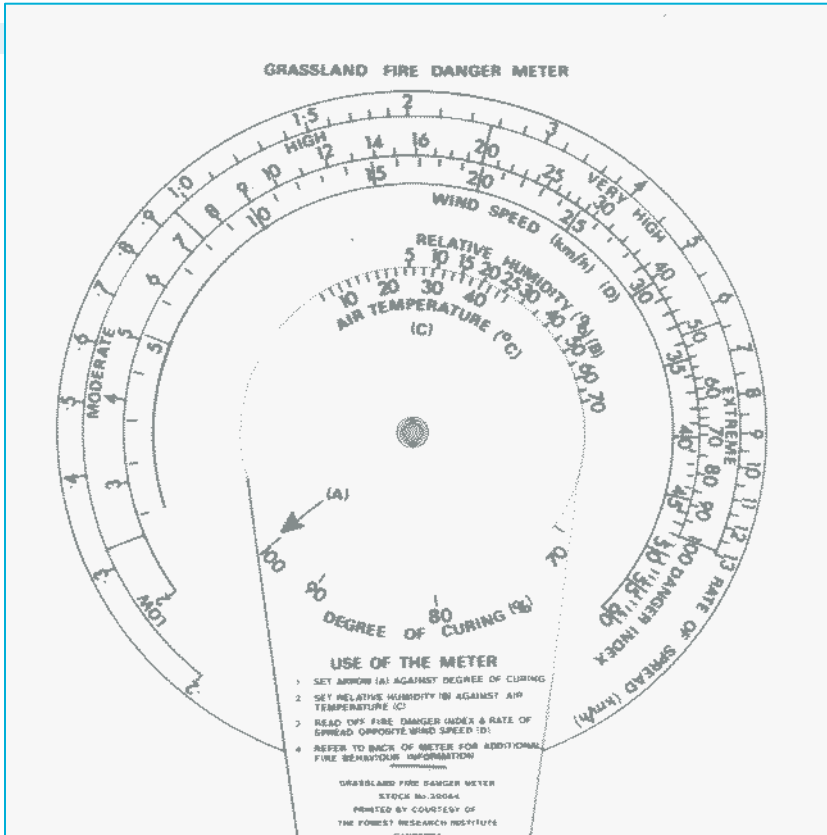


...and back to Research

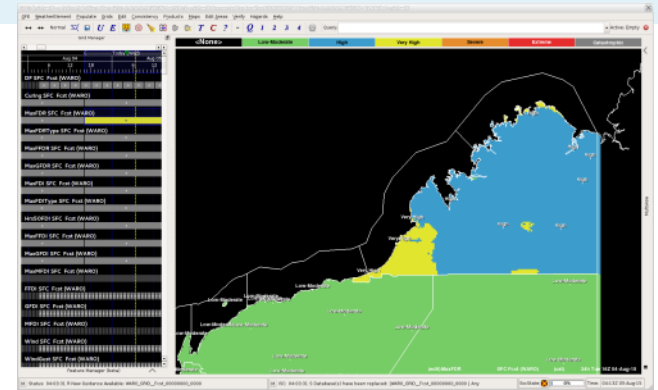
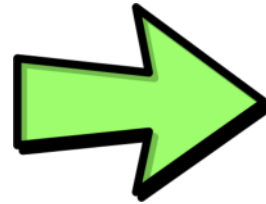


Australian Government
Bureau of Meteorology

Current Operations Built On 1960s Research



McArthur 1960s



IDW13050

Issued at 4:10 pm WST on Tuesday 4 August 2015.

District	Wednesday
North Kimberley Coast	Very High
West Kimberley Coast	Very High
Kimberley Inland	High
East Pilbara Coast	Low-Moderate
West Pilbara Coast	Low-Moderate
East Pilbara Inland	Low-Moderate



Australian Government
Bureau of Meteorology

How Does More Recent Research Get to Operations?



3D Complexity e.g.
Coonabarabran Fire

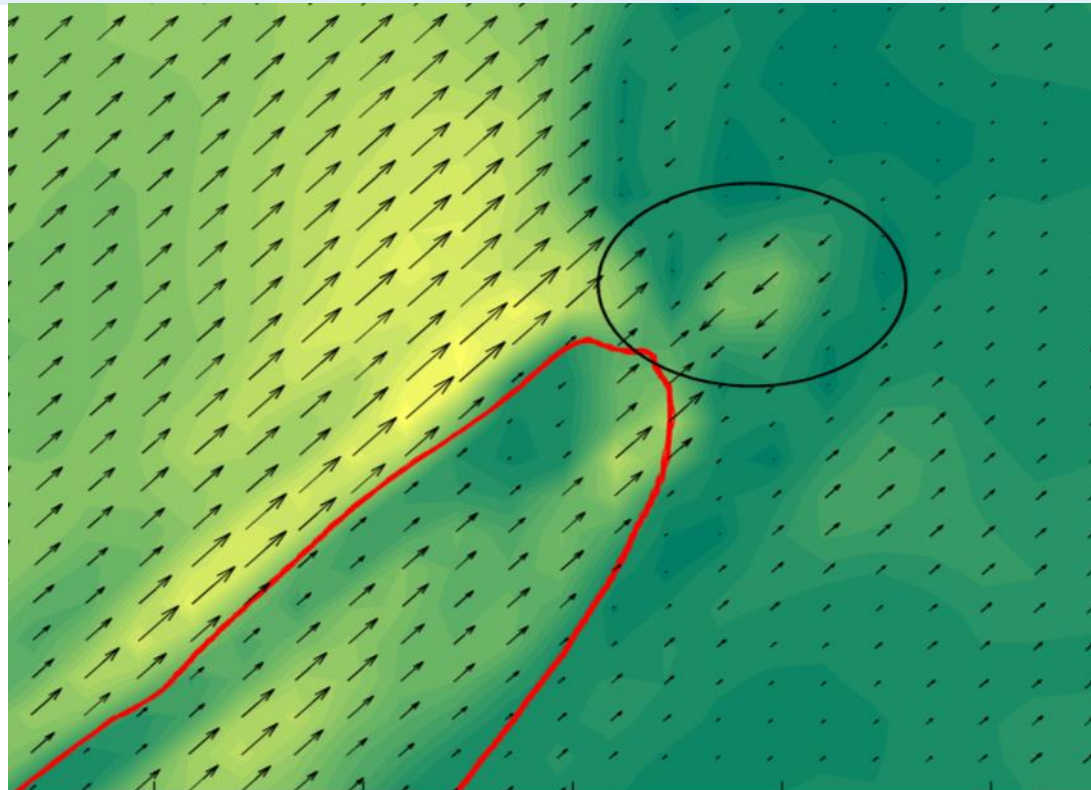


IDN30100
Australian Government Bureau of Meteorology
New South Wales

Spot Fire Weather Forecast for
Issued at 4:14 pm EDT on Sunday 16 November



How Does More Recent Research Get to Operations?



136.86 136.87 136.88 136.89 136.9

Wind speed m/s

1 2 3 4 5 6 7 8 9

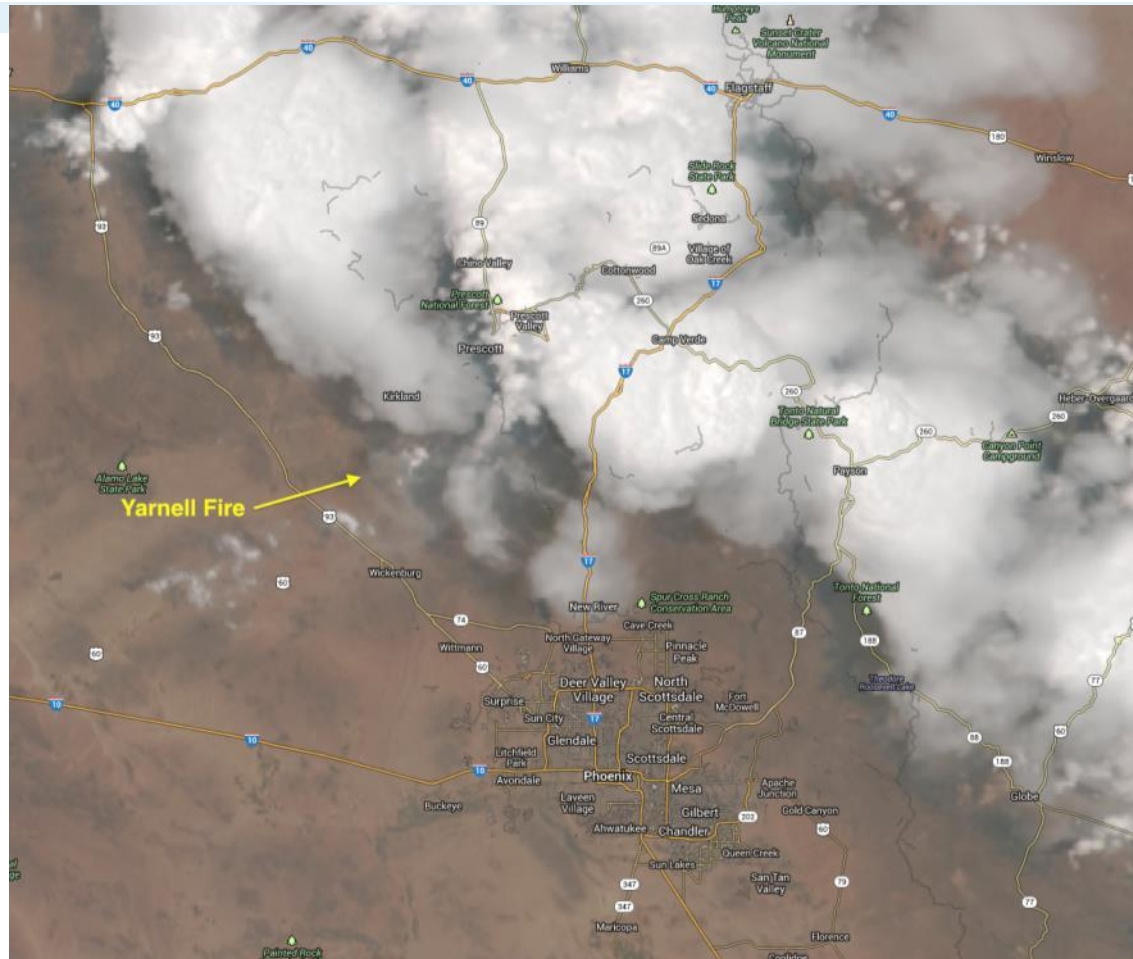
Fire Modified Winds e.g. Rocky River Fire



Australian Government

Bureau of Meteorology

19 Fire Fighters Died

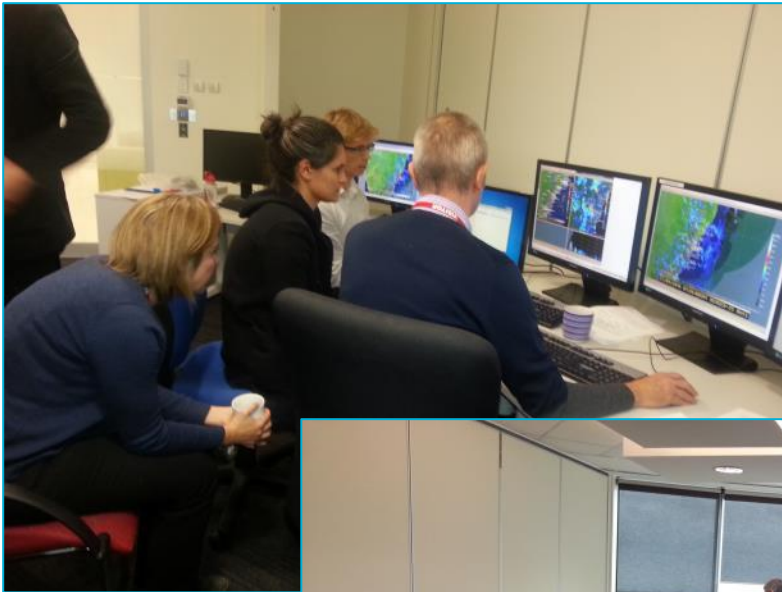


Thunderstorm Outflows e.g. Yarnell, Arizona

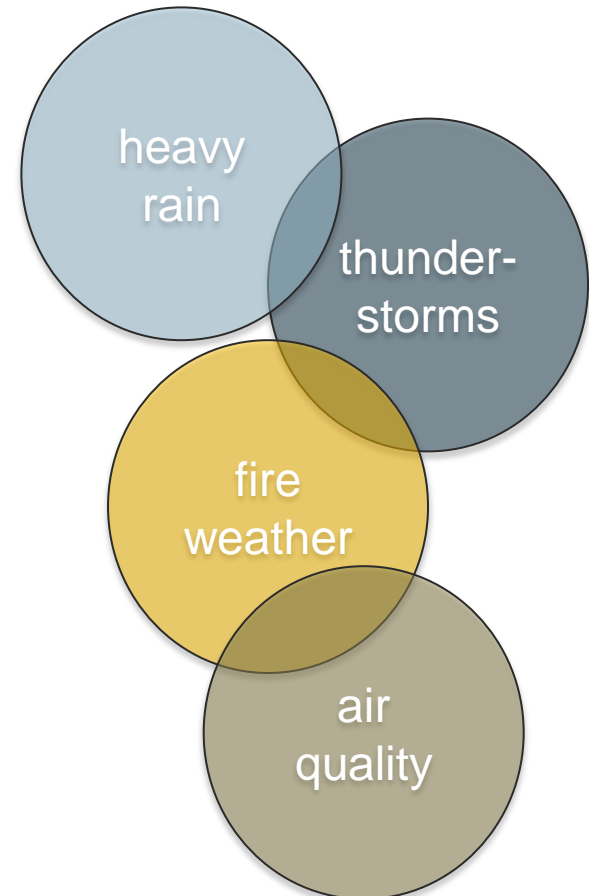
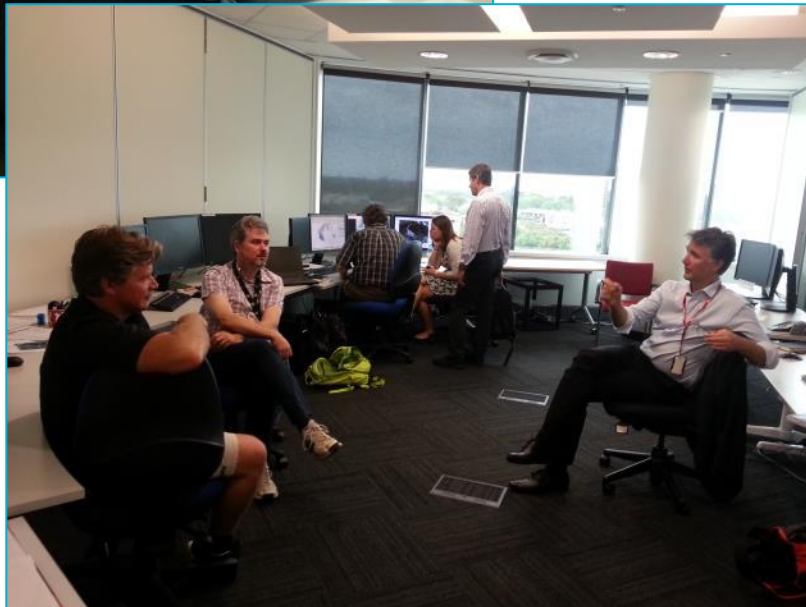


Australian Government
Bureau of Meteorology

Forecast Demonstration Projects - Exposing Research to Operations



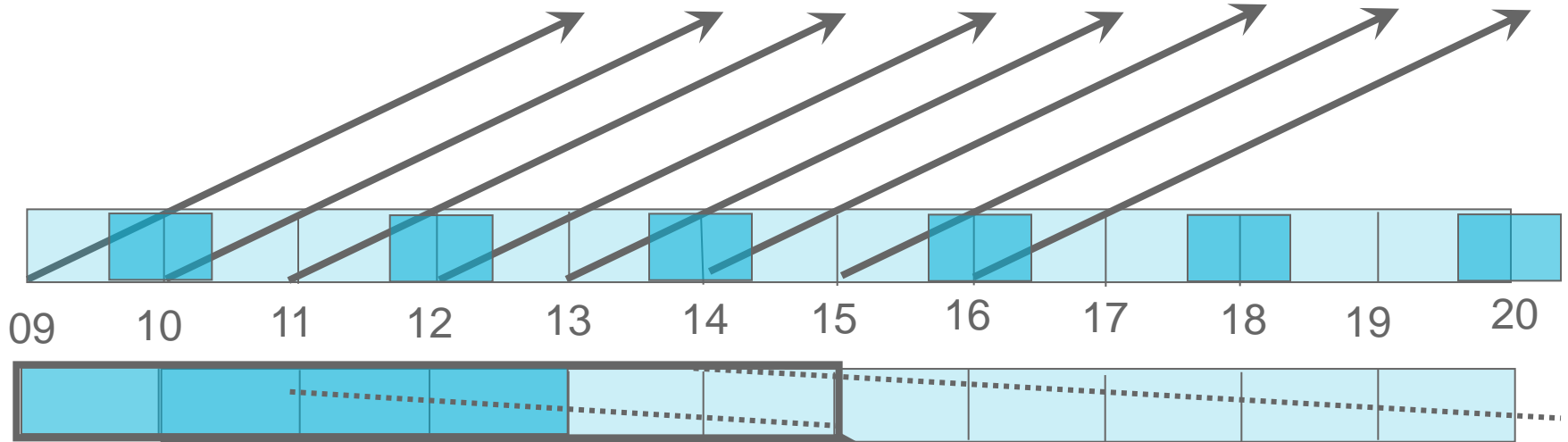
Sydney Oct to Dec 2014





Model with More Up-To-Date Information, More Frequently

Rapid Update Cycle (RUC) 1.5km Weather Model



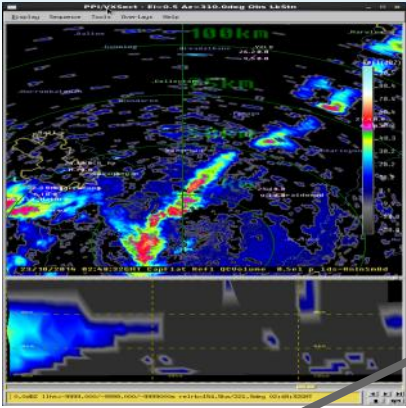
UTC hour →

Operational 4km Weather Model

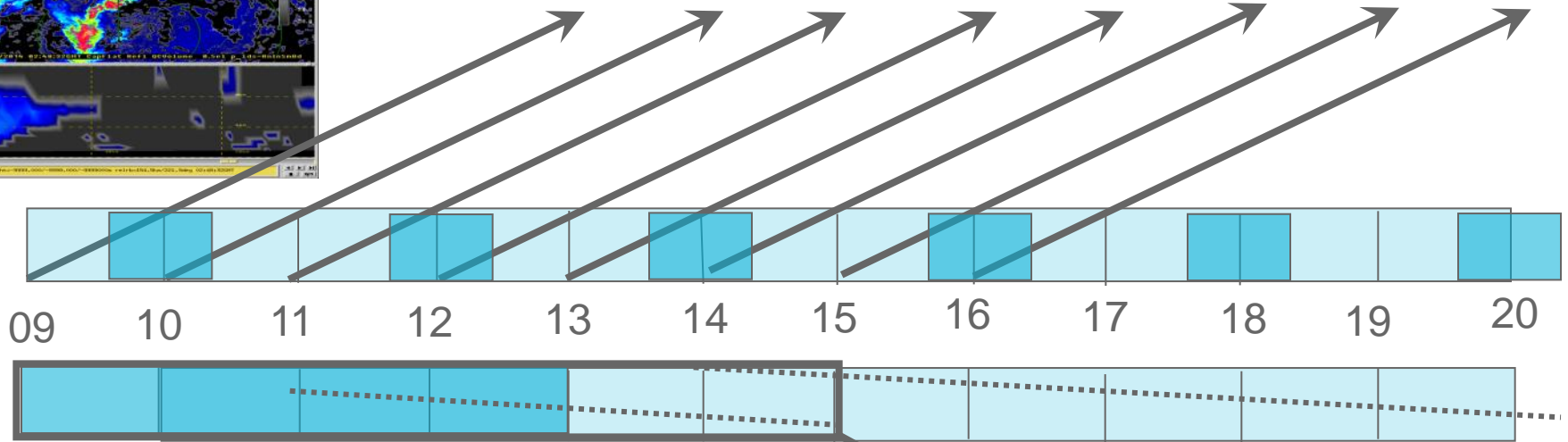


Australian Government
Bureau of Meteorology

Model with More Up-To-Date Information, More Frequently



Rapid Update Cycle (RUC) 1.5km Weather Model

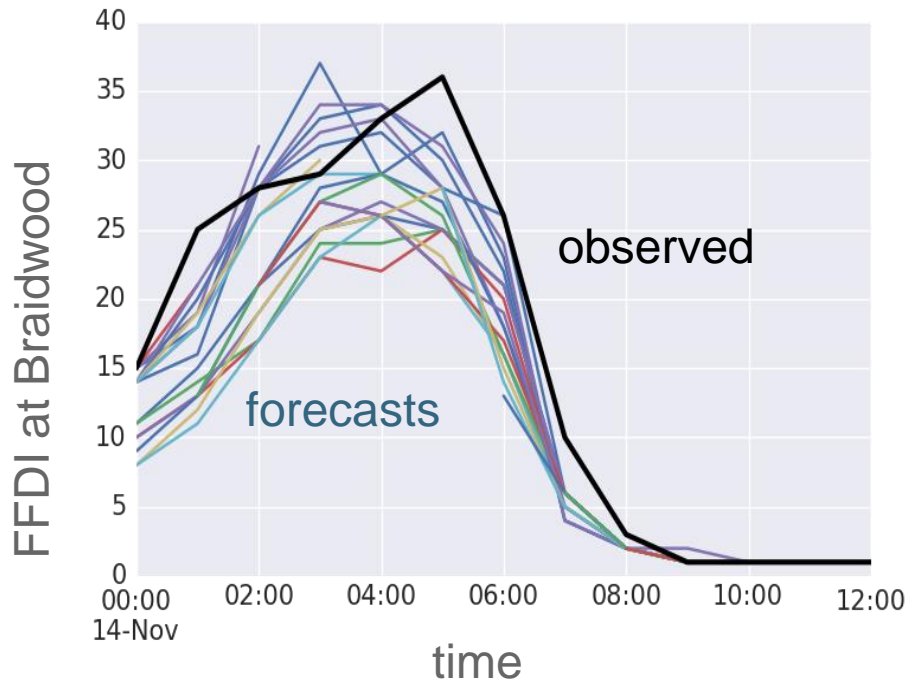


UTC hour →

Operational 4km Weather Model



Too Much Information!



Quick response?

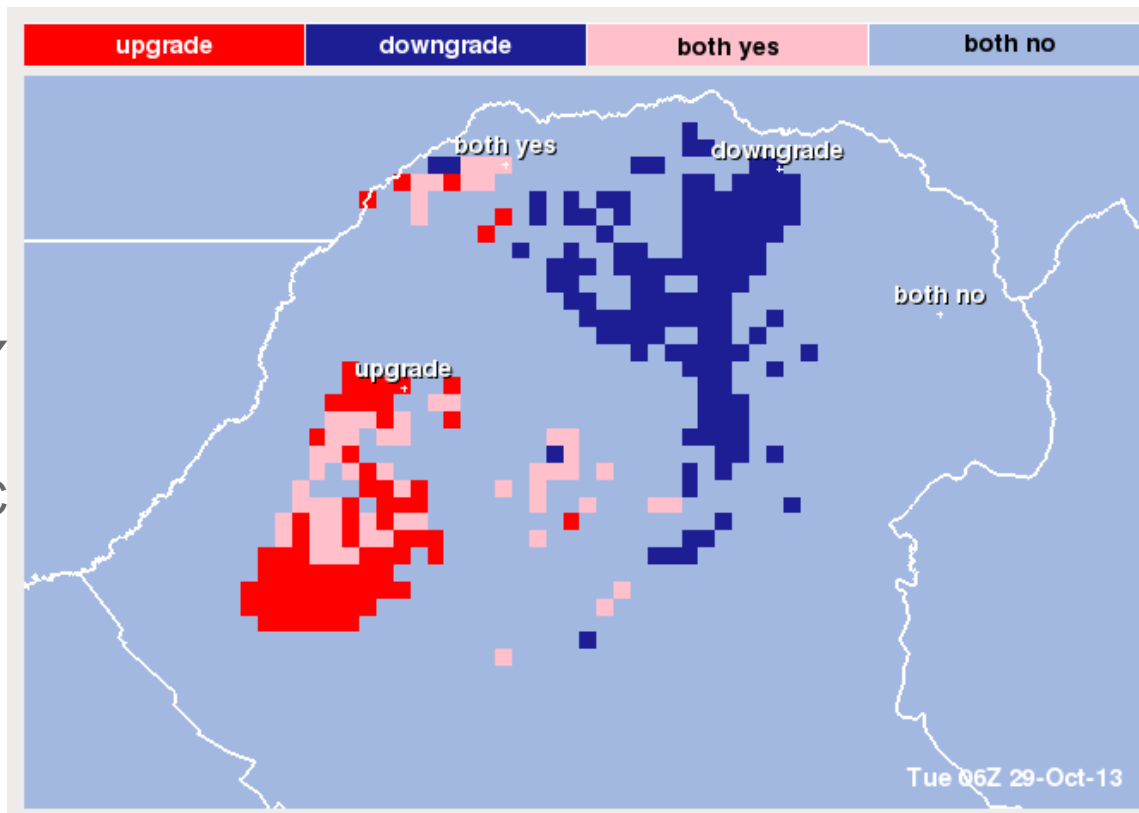
Worsening conditions?





Australian Government
Bureau of Meteorology

Alerting the Forecaster to the Important Information



Earlier RUC forecast

Later RUC forecast



Graphical Forecast Editor



Australian Government

Bureau of Meteorology

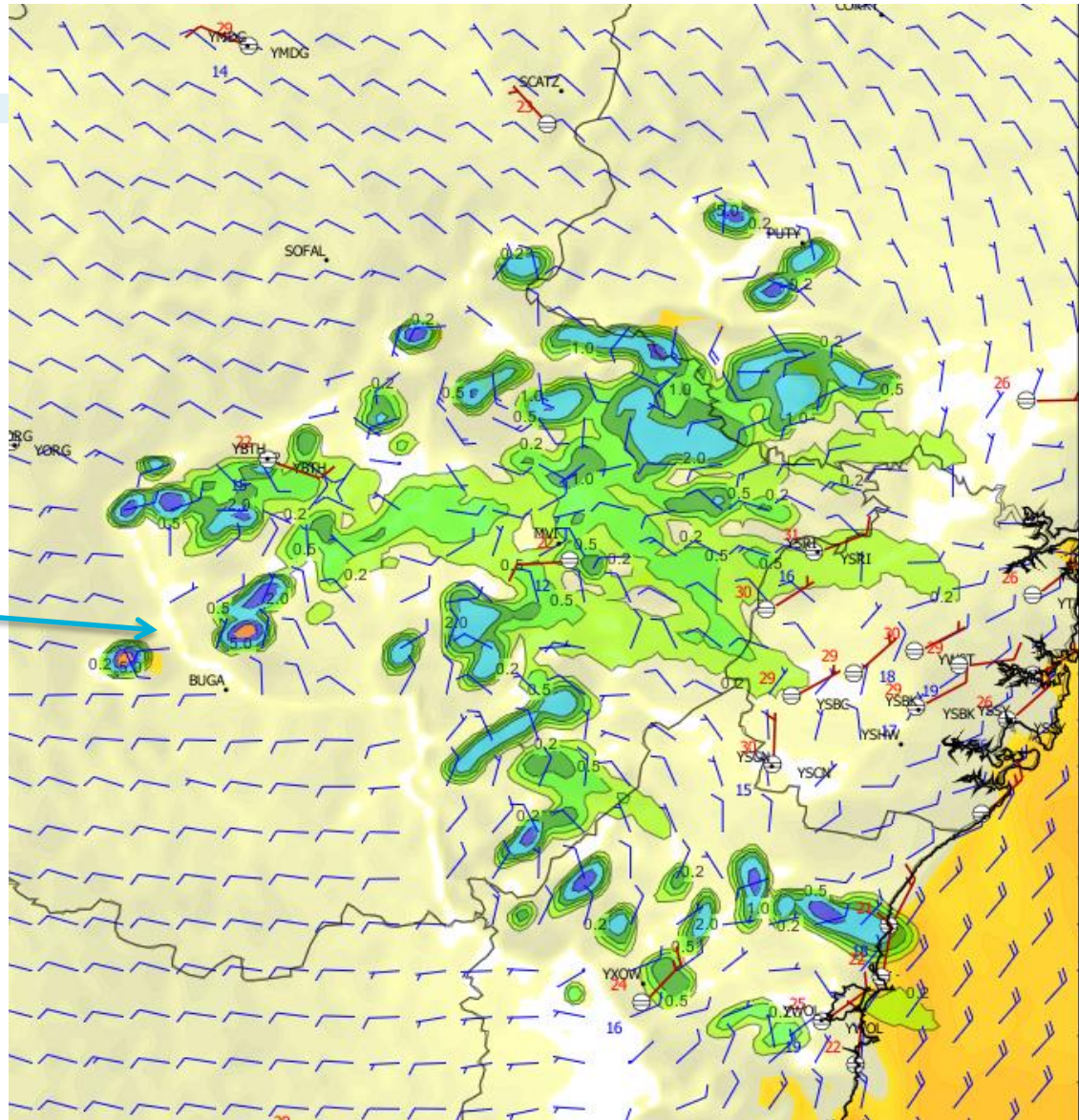
High Resolution Weather Model Output

Benefits:
Convection-resolving
Topographic detail

Thunderstorm outflow



10m wind barbs
Precipitation
Site observations



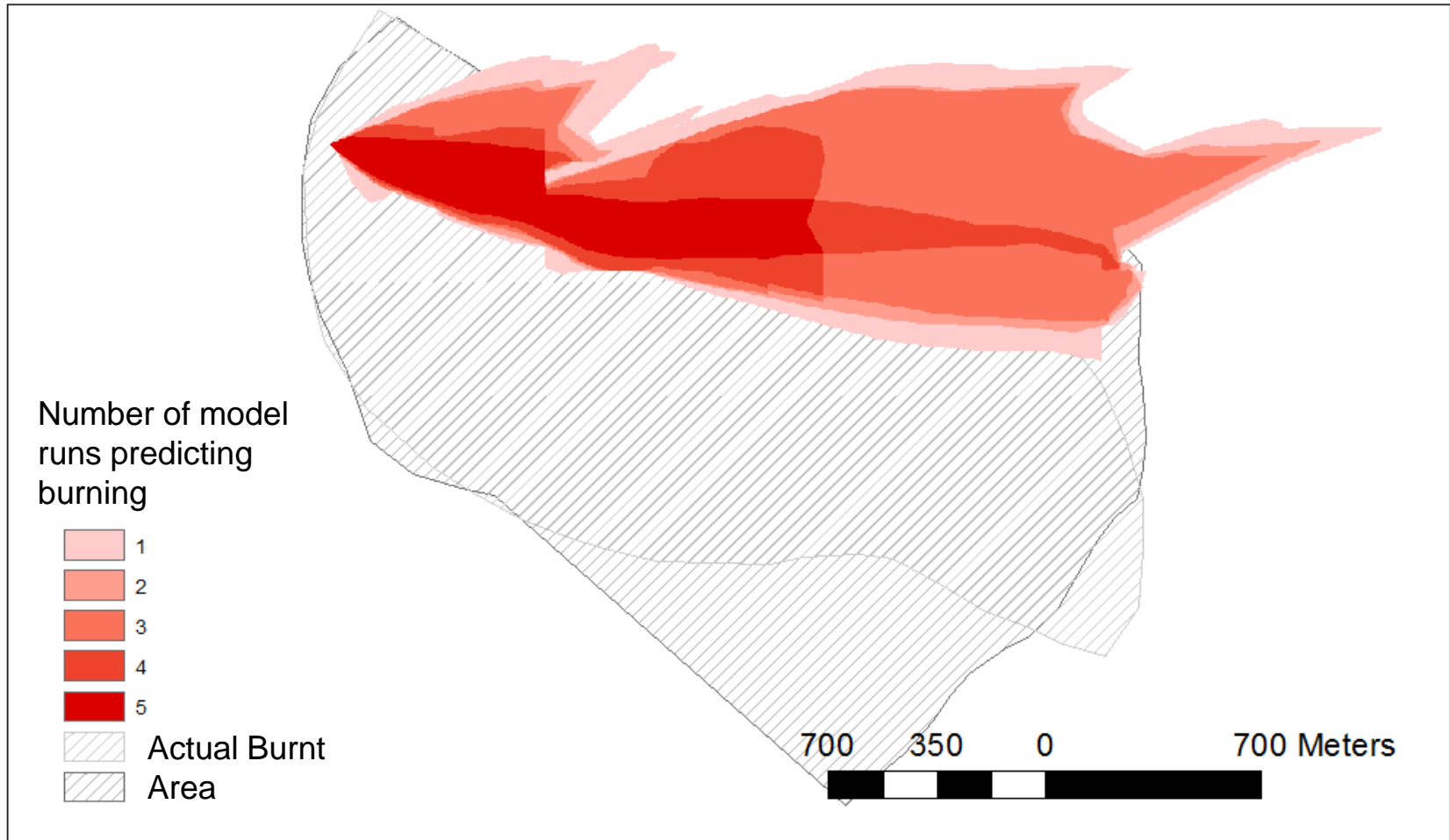


Australian Government

Bureau of Meteorology

Value of High Resolution Rapid Updates for Fire Modelling (RFS/BoM)

Hume Highway Coolac grass fire, 14 Nov 2014

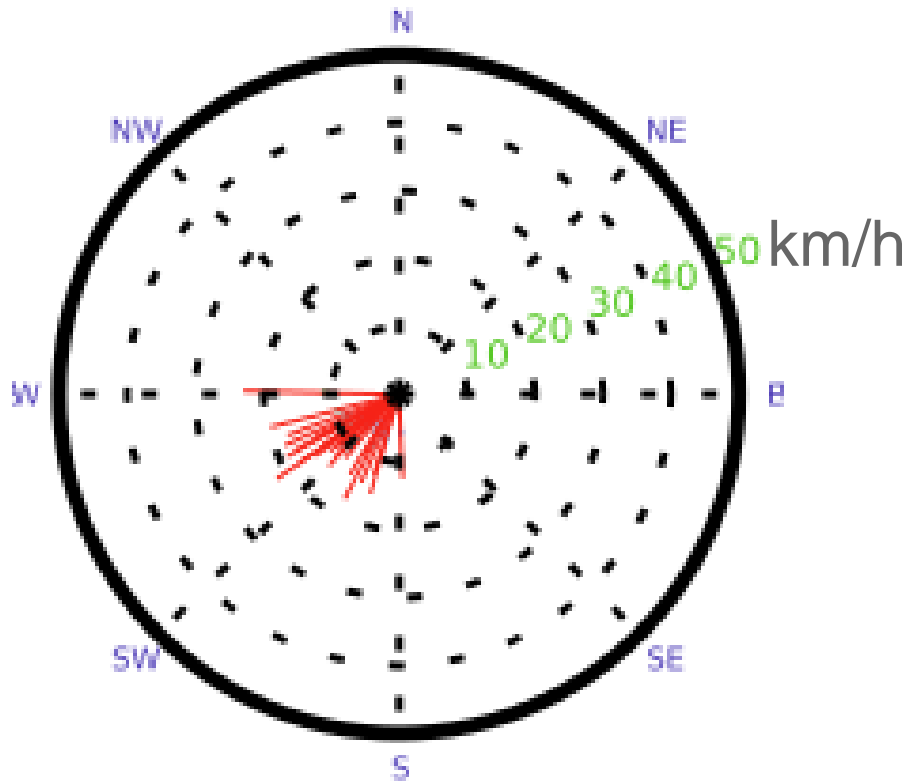




Australian Government
Bureau of Meteorology

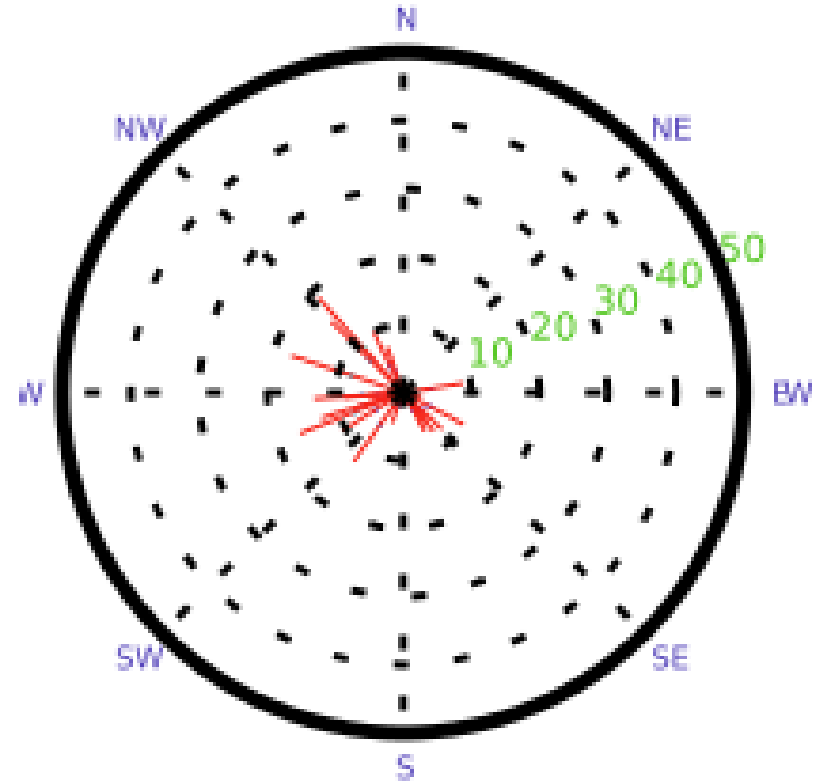
Summarizing Range of Long-Term Ensemble Forecasts for a Location

Thu 13 1600



3 days ahead

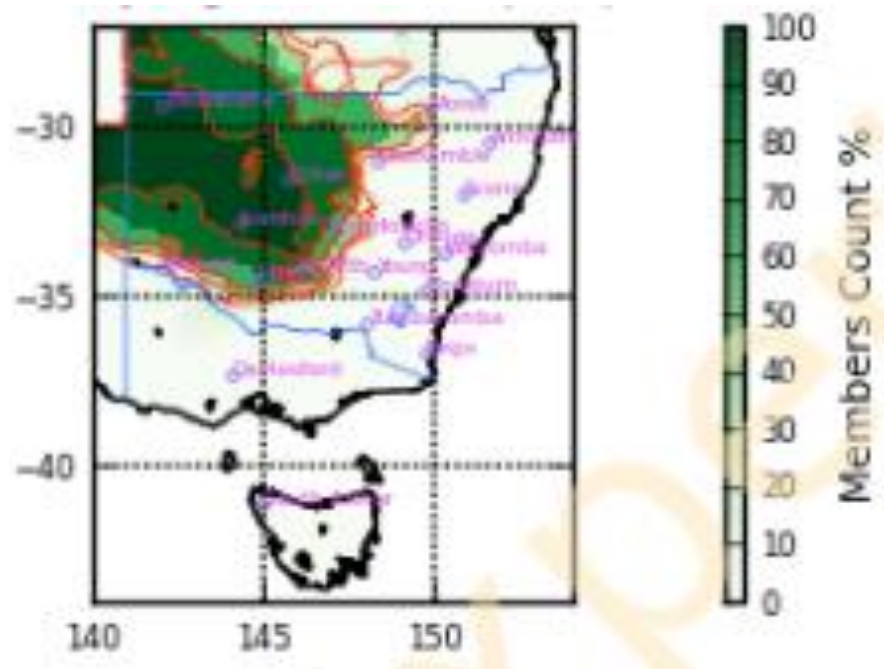
Mon 17 1600



6 days ahead



Estimating Risk of Higher Fire Dangers Later in the Week



FFDI 25+ (Very High and Above)



Australian Government

Bureau of Meteorology

Benefits for Fire Management Community

- Most detailed operational forecast guidance now in use
- Pathway to even more detailed, more up-to-date forecasts
- Way forward on assessment of risk/uncertainty

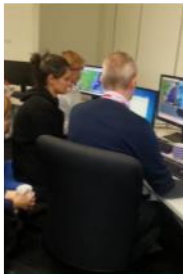




What Next?



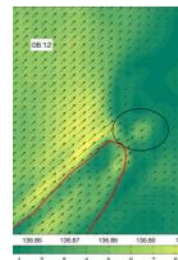
Many understandings from recent research need to be incorporated



Value of exposing research in operational setting

Wednesday
Very High
Very High
High
Low-Moderate
Low-Moderate
Low-Moderate

Need to trial new approaches to fire danger rating



Is it time for a Forecast Demonstration Project for fire predictive services?