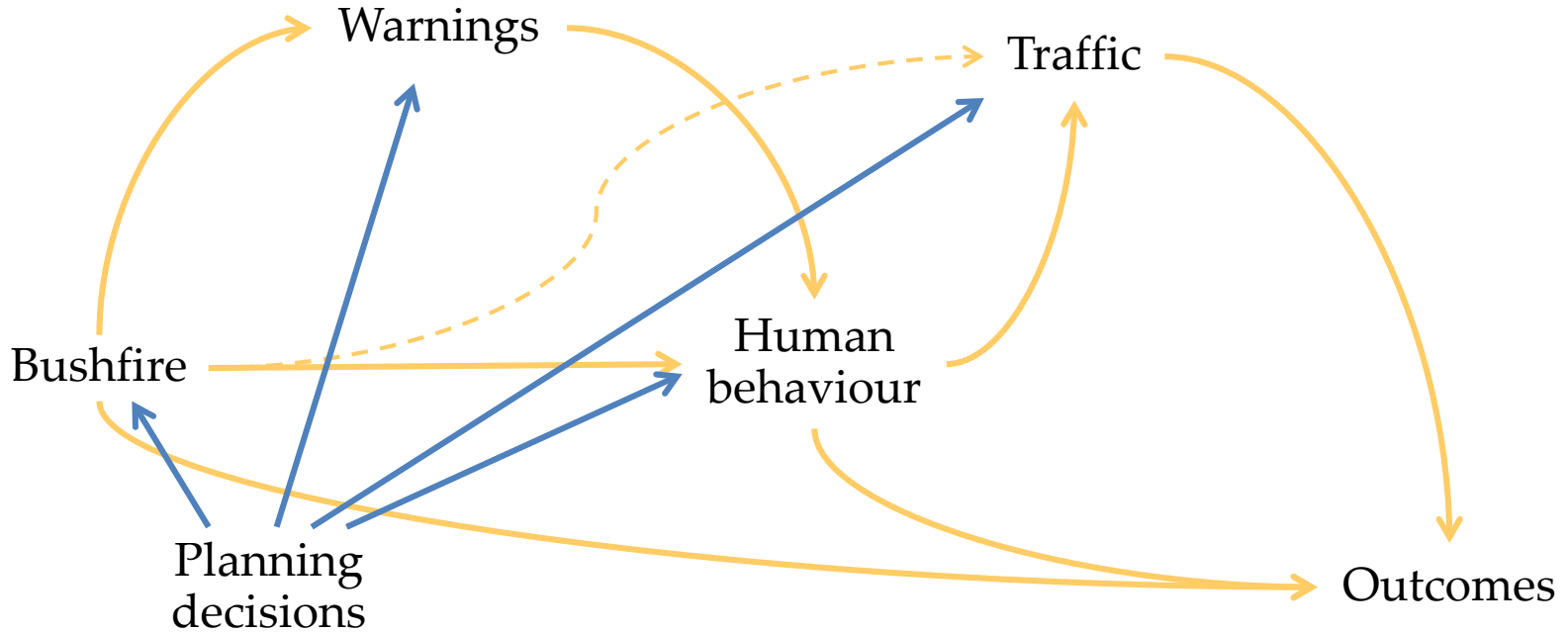


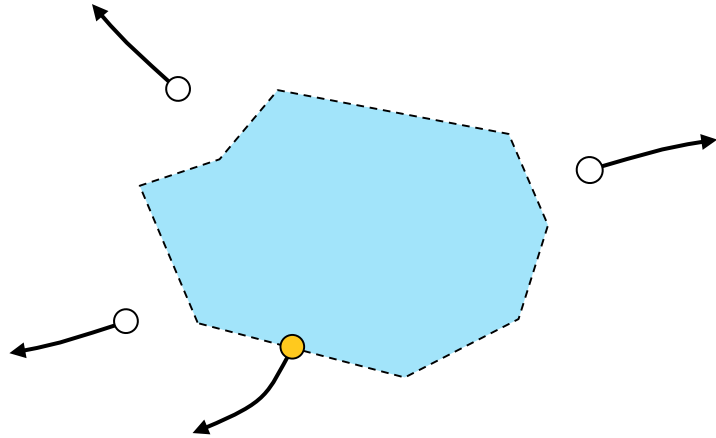
A bushfire evacuation planning service utilising multiple simulation systems

Kent Steer
IBM Research

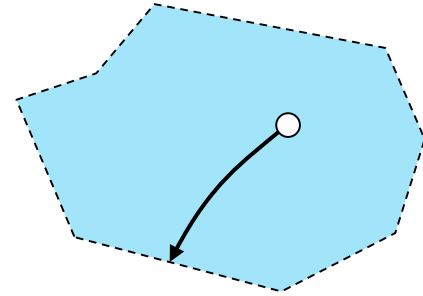
Motivation



Outcome evaluation

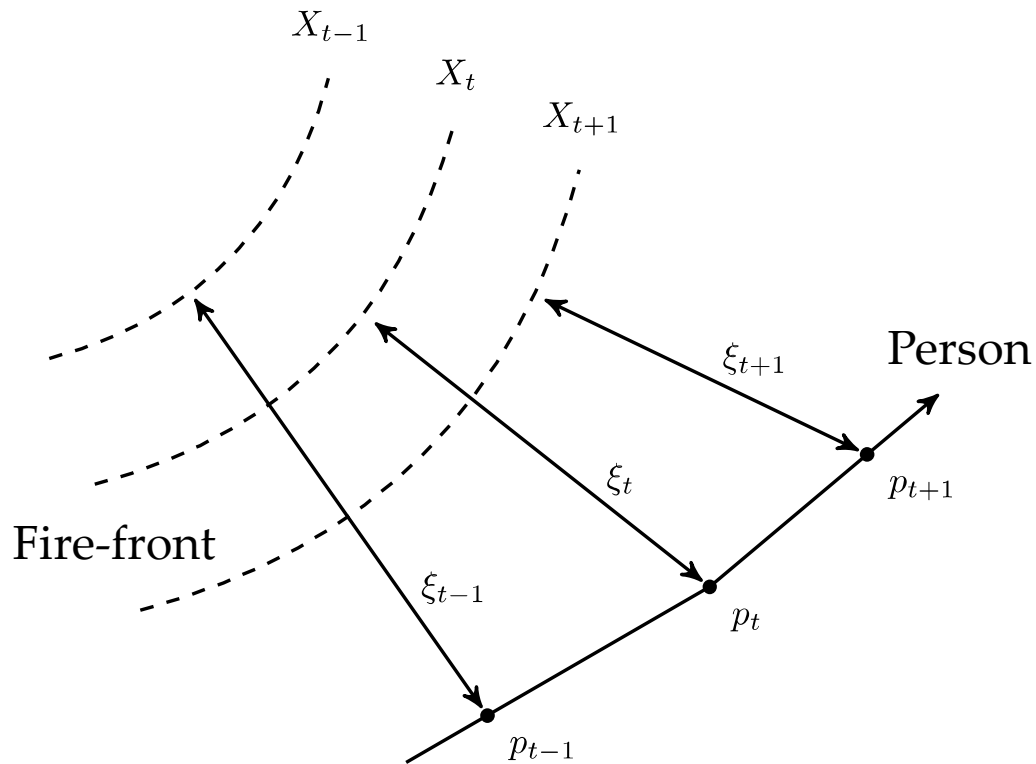


Clearance time
(time of *last exit*)

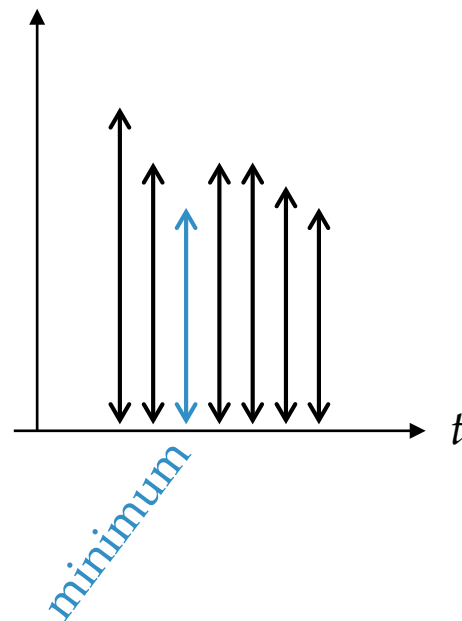


Egress time
(time *to exit*)

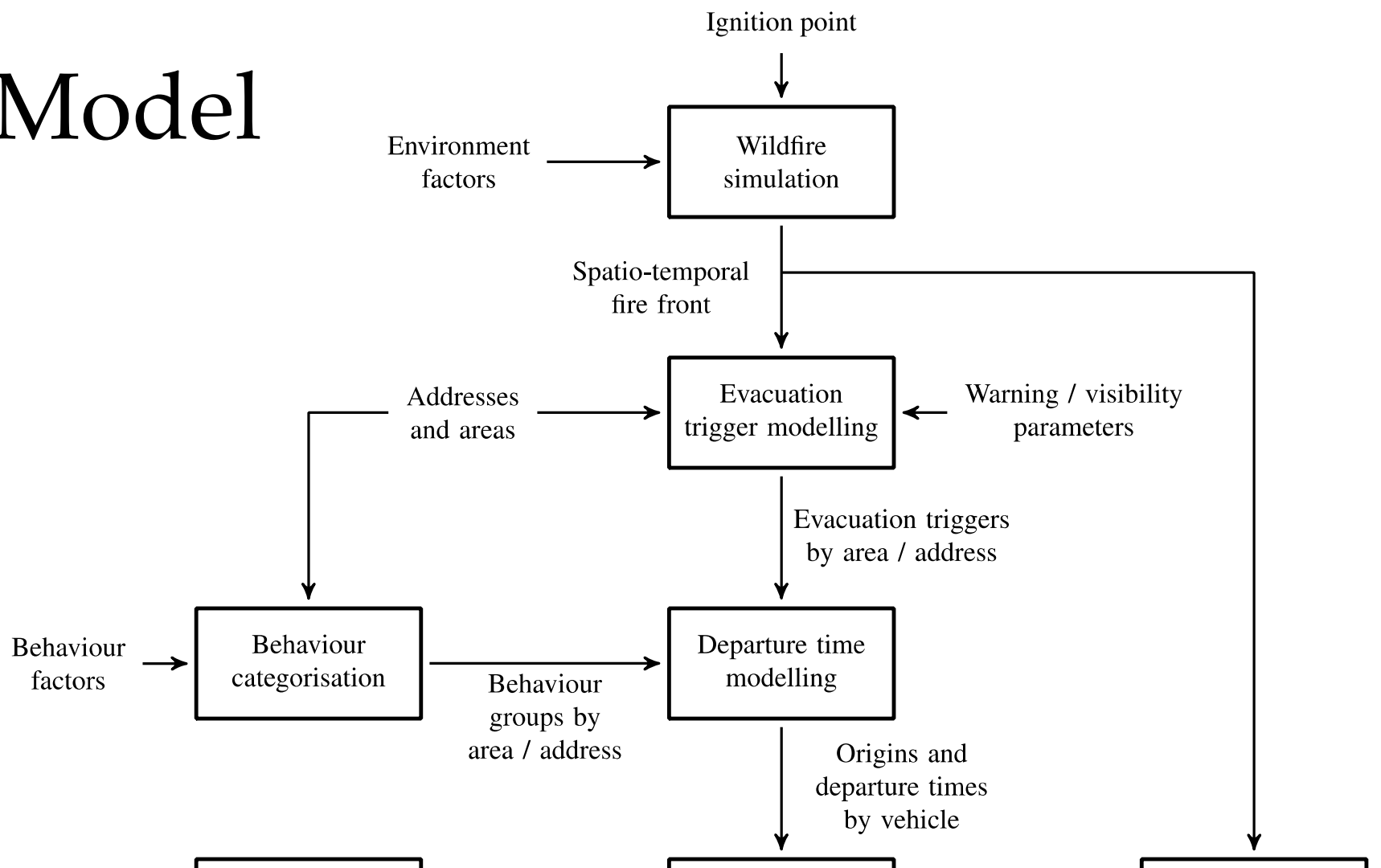
Person-threat distance



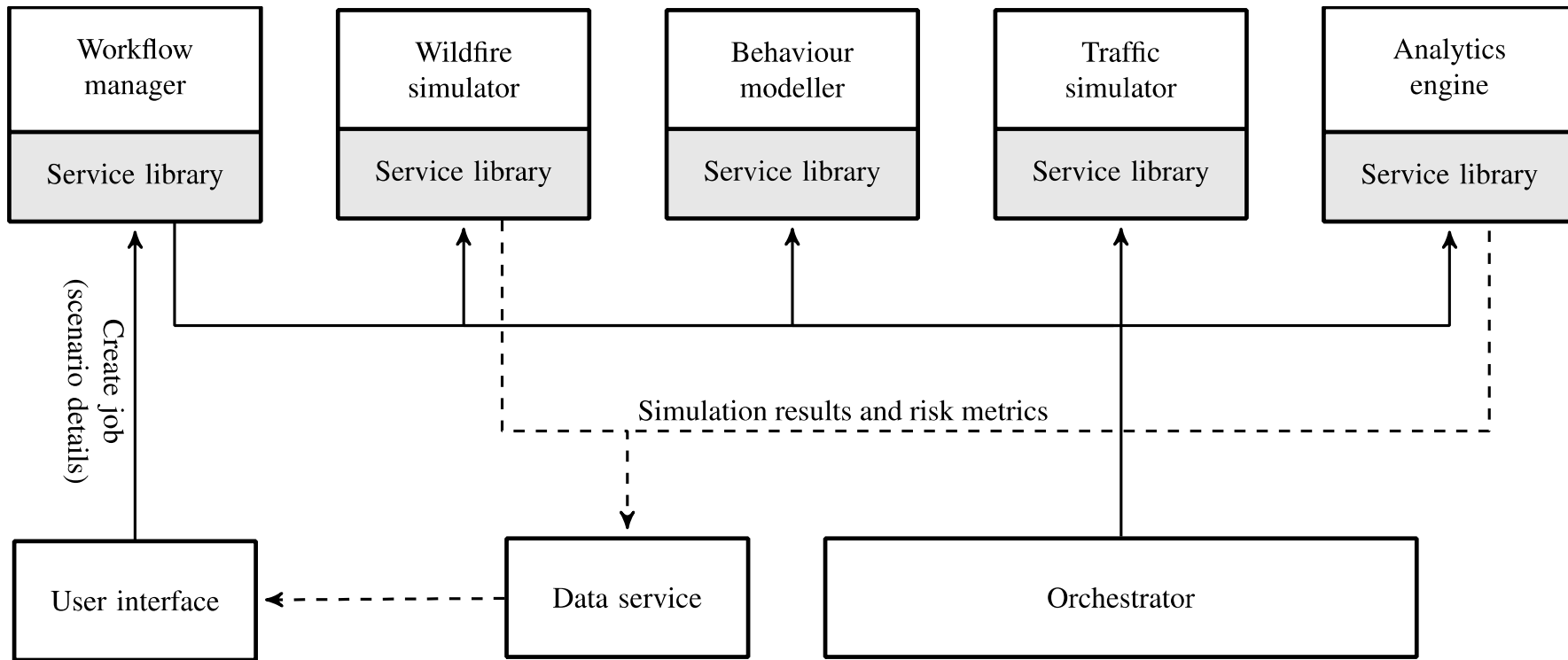
distance



Model

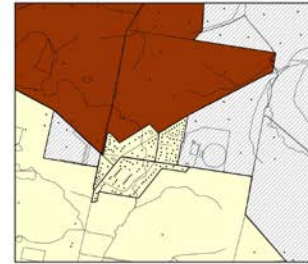
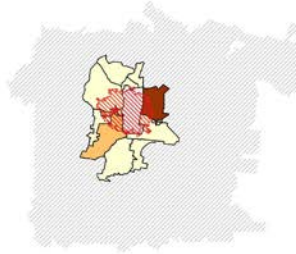


Architecture

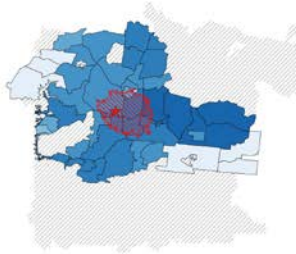


Wind-speed = 5 km/h

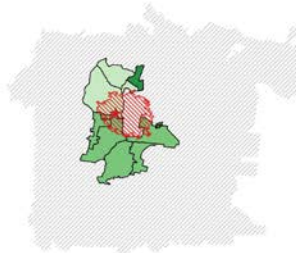
Exposure
count



Clearance
time



Egress
time



Legend

- ★ Ignition Point
- Roads
- Addresses

Exposure Count (vehicles)

- 0.0 - 6.8
- 6.8 - 14.5
- 14.5 - 22.2
- 22.2 - 30.0

Clearance Interval (hrs)

- 1.0 - 2.0
- 2.0 - 3.0
- 3.0 - 4.0
- 4.0 - 5.0
- 5.0 - 6.0
- 6.0 - 7.0
- 7.0 - 8.0
- 8.0 - 9.0
- 9.0 - 10.0
- 10.0 - 11.0
- 11.0 - 12.0

Egress Mean (mins)

- 0.000 - 5.000
- 5.000 - 10.000
- 10.000 - 15.000
- 15.000 - 18.283

Weather

- FDI: 60
- Wind Velocity: 5
- Wind Direction: 300

Behaviour:

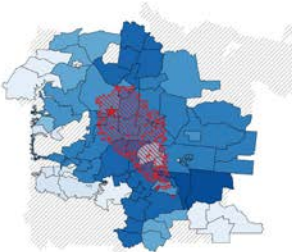
- 2h-warning: 6%
- 6h-warning: 8%
- 24h-warning: 6%
- fire-visile: 23%

Wind-speed = 20 km/h

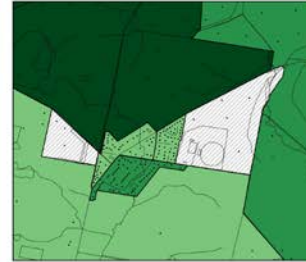
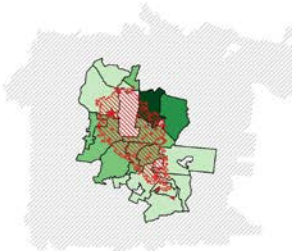
Exposure
count



Clearance
time



Egress
time



Legend

- ★ Ignition Point
- Roads
- Addresses

Exposure Count (vehicles)

- 0.0 - 6.8
- 6.8 - 14.5
- 14.5 - 22.2
- 22.2 - 37.0

Clearance Interval (hrs)

- 1.0 - 2.0
- 2.0 - 3.0
- 3.0 - 4.0
- 4.0 - 5.0
- 5.0 - 6.0
- 6.0 - 7.0
- 7.0 - 8.0
- 8.0 - 9.0
- 9.0 - 10.0
- 10.0 - 11.0
- 11.0 - 12.0

Egress Mean (mins)

- 0.000 - 5.000
- 5.000 - 10.000
- 10.000 - 15.000
- 15.000 - 18.283

Weather

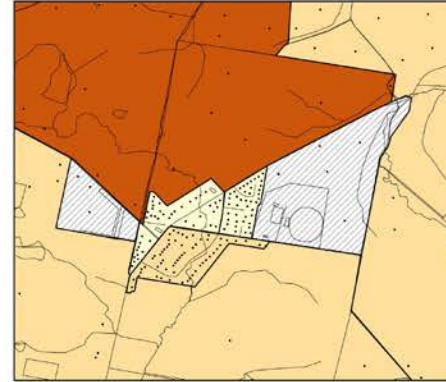
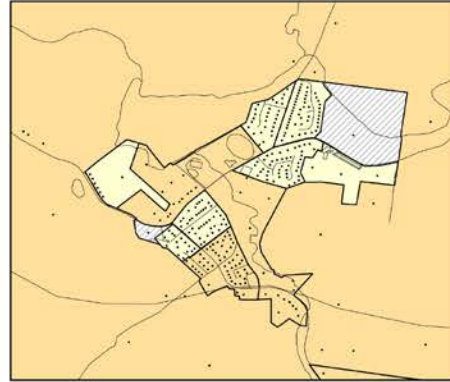
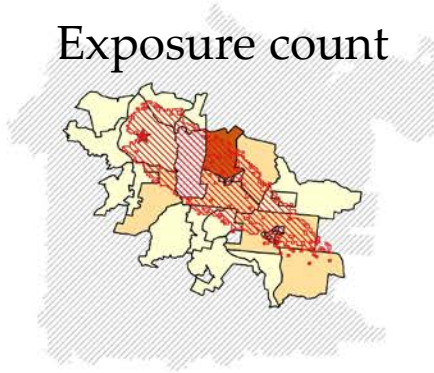
FDI: 90
Wind Velocity: 20
Wind Direction: 300

Behaviour:

2h-warning: 6%
6h-warning: 8%
24h-warning: 6%
fire-visile: 23%

Behaviour (0.3 stay / 0.5 warning / 0.2 visible)

Exposure count



Legend

- ★ Ignition Point
- Roads
- Addresses

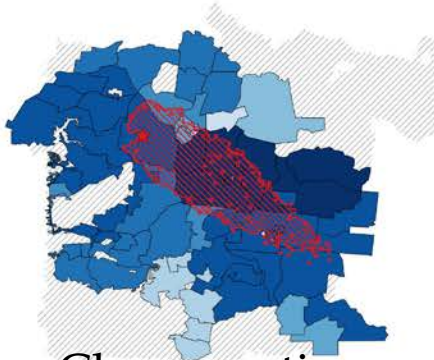
Exposure Count (vehicles)

- 0.0 - 8.0
- 8.0 - 16.0
- 16.0 - 24.0
- 24.0 - 32.0
- 32.0 - 40.0
- 40.0 - 48.0

Clearance Interval (hrs)

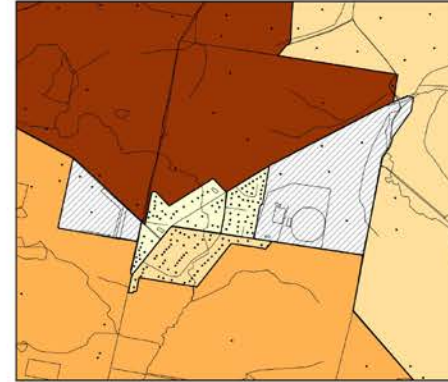
- 1.0 - 2.0
- 2.0 - 3.0
- 3.0 - 4.0
- 4.0 - 5.0
- 5.0 - 6.0
- 6.0 - 7.0
- 7.0 - 8.0
- 8.0 - 9.0
- 9.0 - 10.0

Clearance time



Behaviour (0.2 stay / 0.3 warning / 0.5 visible)

Exposure count



Legend

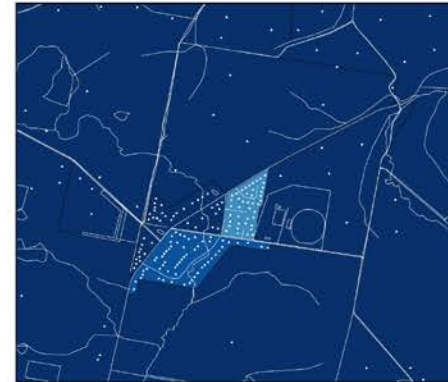
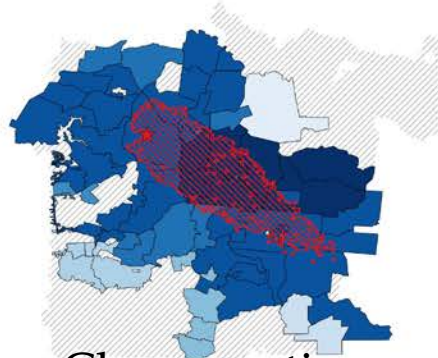
- ★ Ignition Point
- Roads
- Addresses

Exposure Count (vehicles)

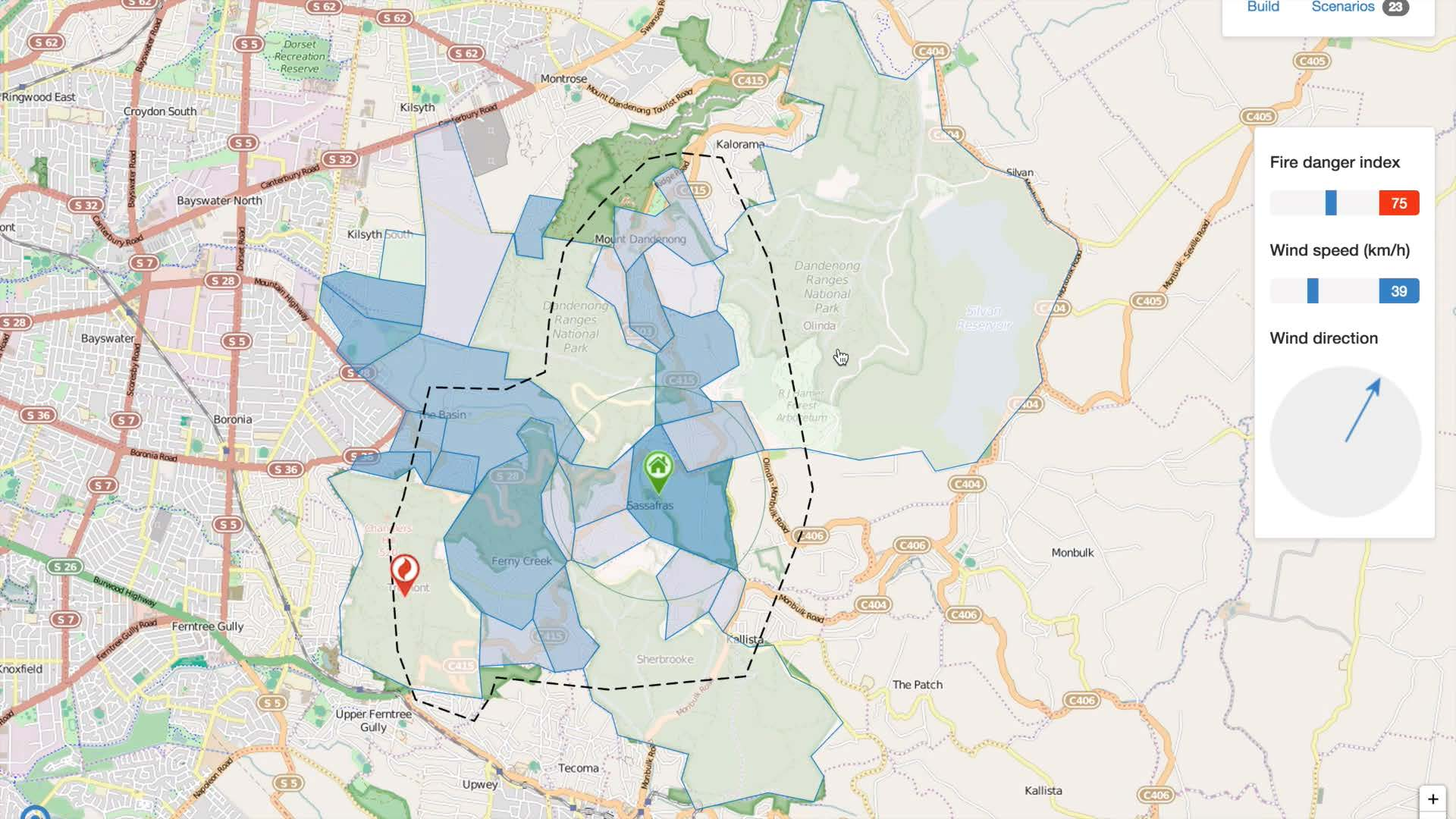
- 0.0 - 8.0
- 8.0 - 16.0
- 16.0 - 24.0
- 24.0 - 32.0
- 32.0 - 40.0
- 40.0 - 48.0

Clearance Interval (hrs)

- 1.0 - 2.0
- 2.0 - 3.0
- 3.0 - 4.0
- 4.0 - 5.0
- 5.0 - 6.0
- 6.0 - 7.0
- 7.0 - 8.0
- 8.0 - 9.0
- 9.0 - 10.0



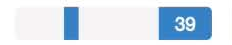
Clearance time



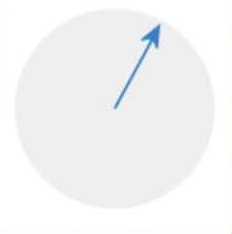
Fire danger index

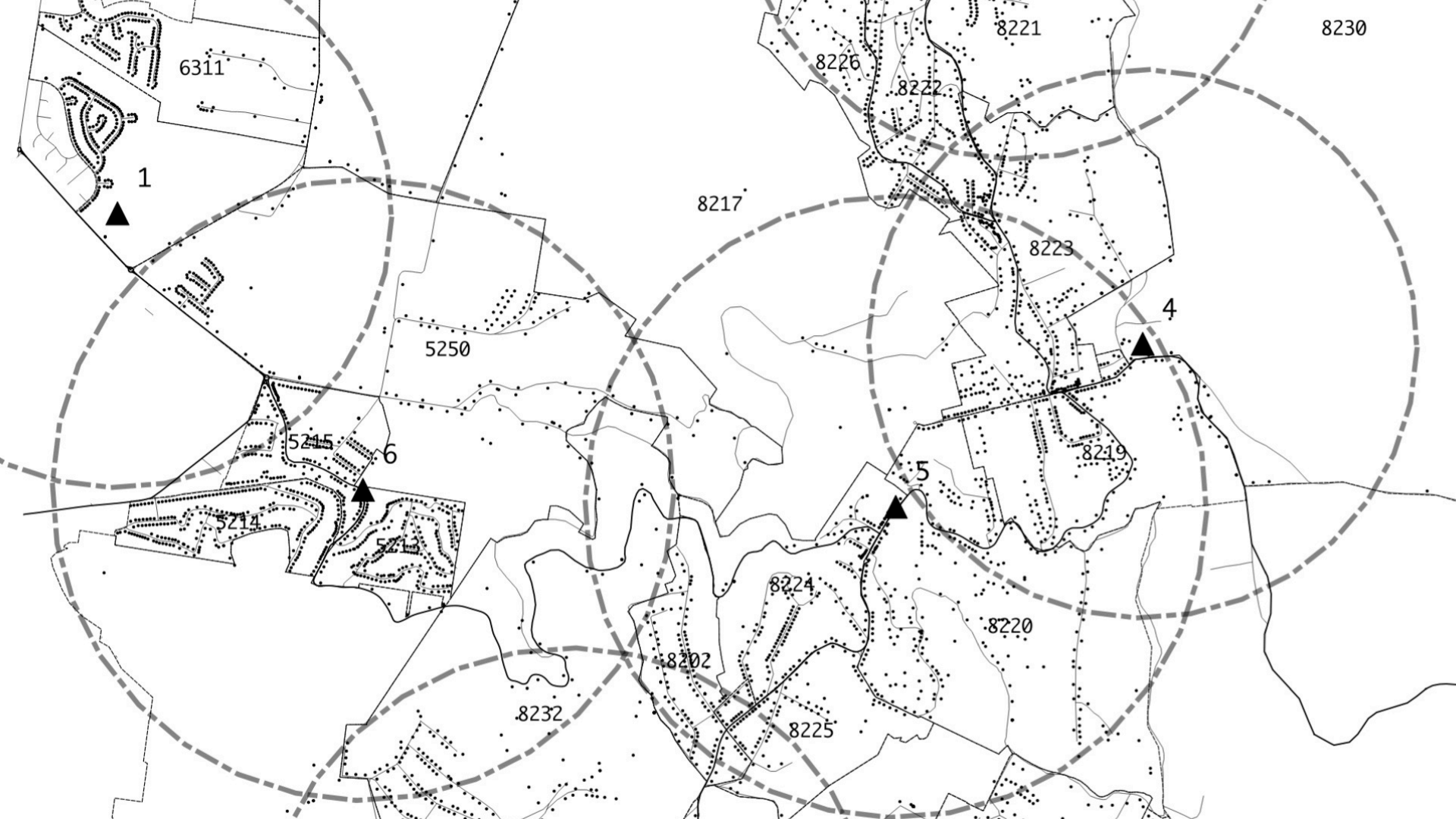


Wind speed (km/h)



Wind direction




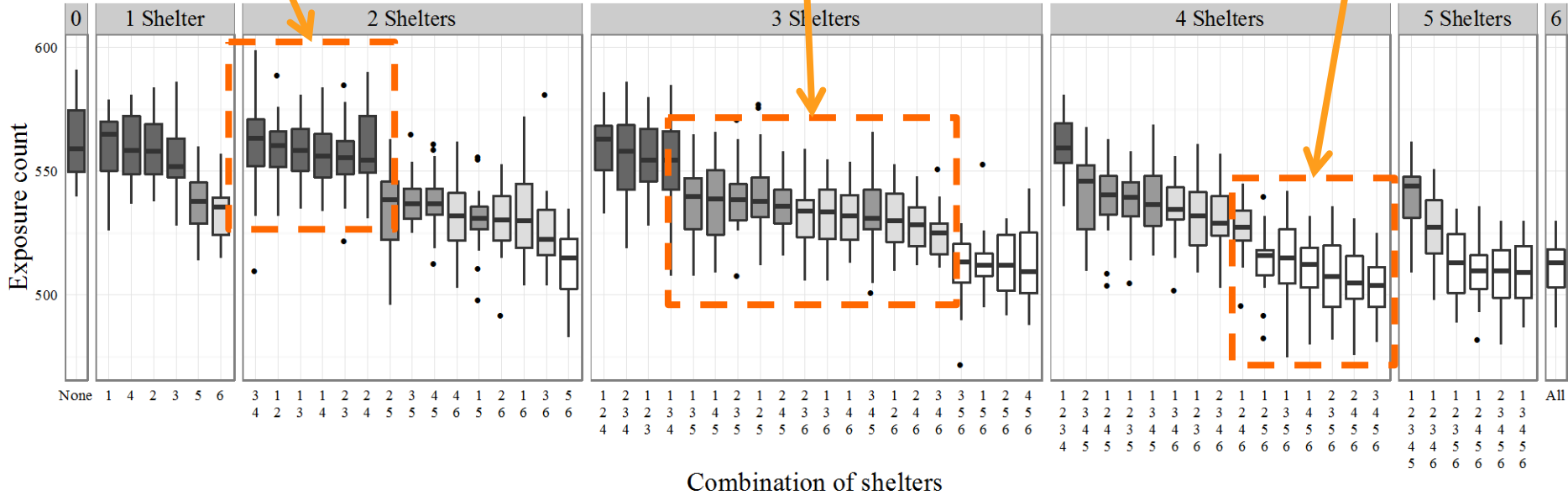


One of 5 or 6

Neither 5 nor 6

Both 5 & 6

Presence of shelters 5 and 6:  5 only 6 only Both Neither



Thanks.
Any questions?

Team:

Anton Beloglazov

Ermyas Abebe

Mahathir Almashor

Laura Rusu

Xiaoyu Xiu (Emma)

Pimeng Fu (Preston)

Cynthia Boyton