

Queensland Fire and Emergency Services

2015/16 QFES *Bushfire Season*

Alice Springs June 21

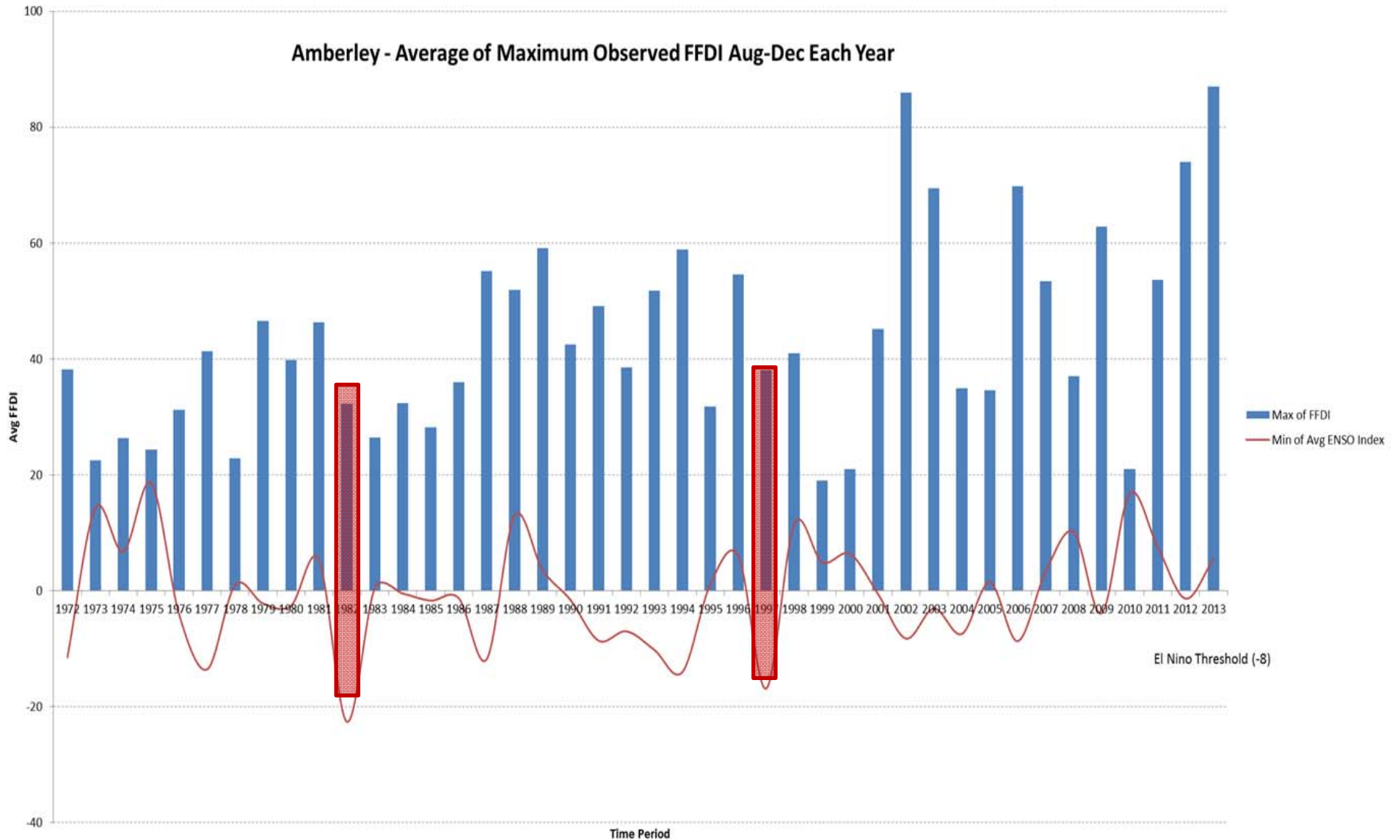


2015 Outlook

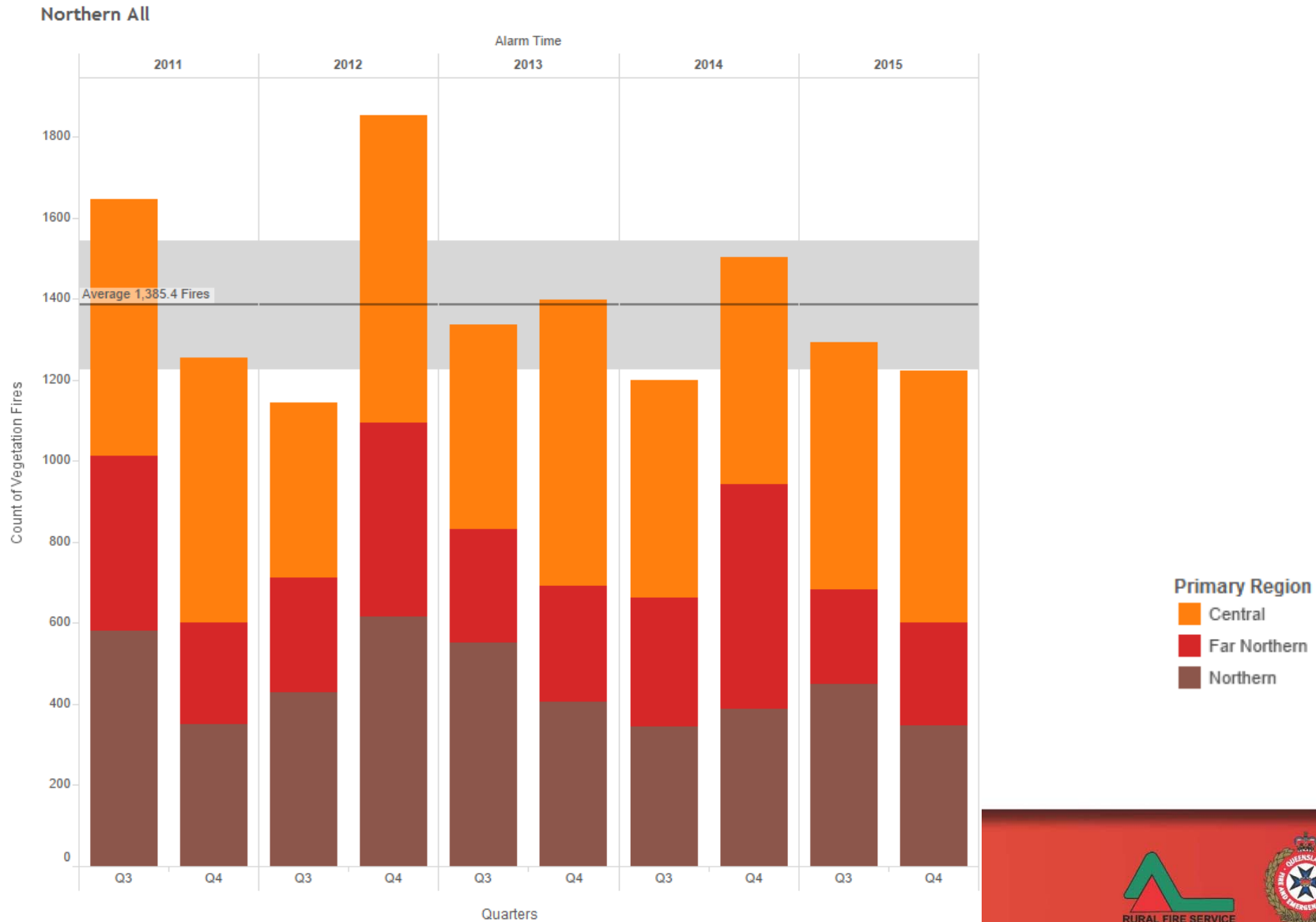
- A strong El Nino was forecast with the likelihood of below average rainfall and above average temps.
- Grass fuel loads were well below average after years of drought and failed wet seasons
- Forested areas had varied soil moisture, generally average with some drier locations in the North



El Niño as a Driver of FFDI

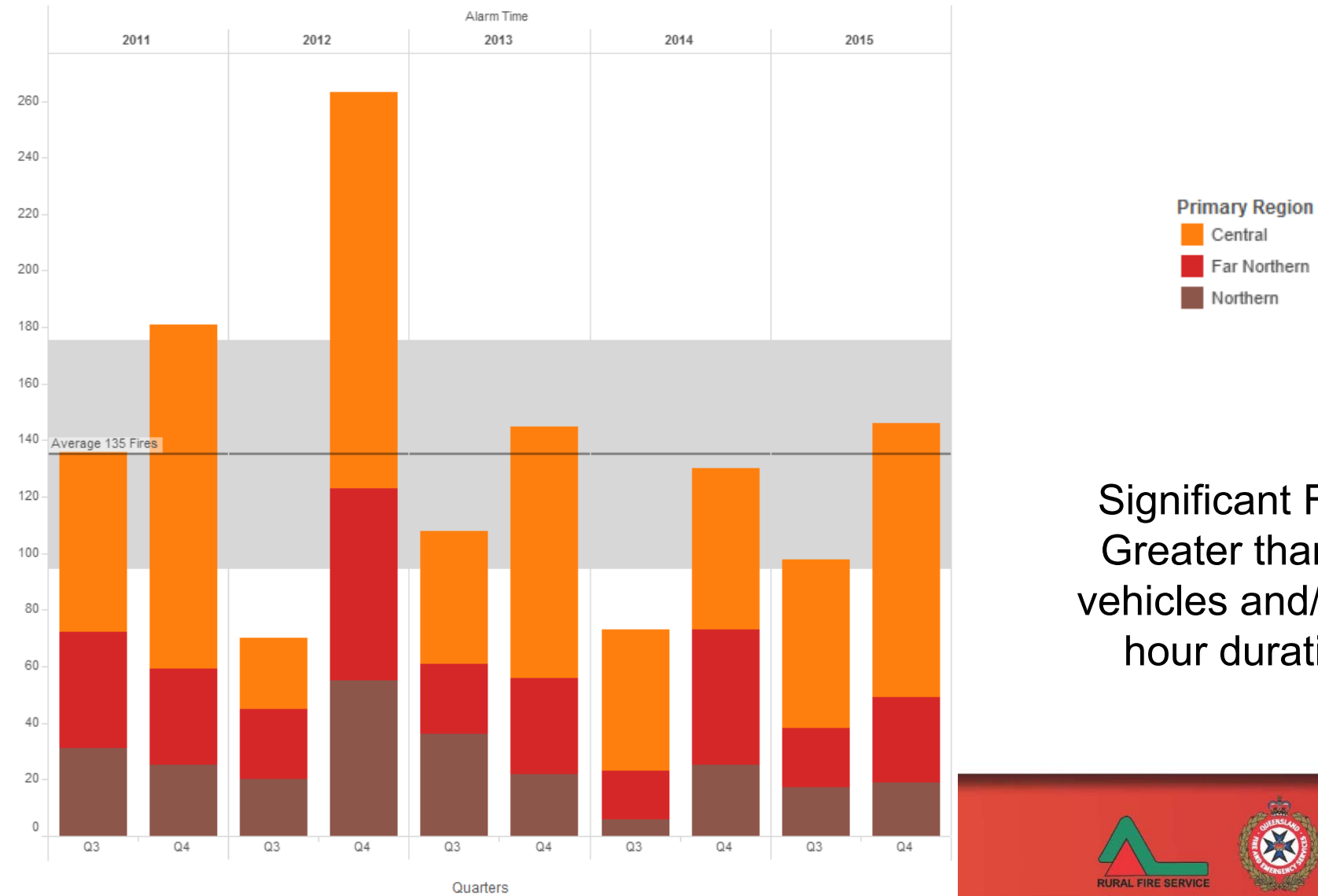


Veg fires for QFES Northern Regions 2015 vs 5 year Average



Significant Veg fires for QFES Northern Regions, 2015 vs 5 year Average

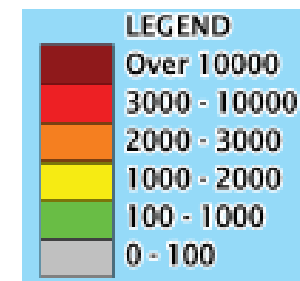
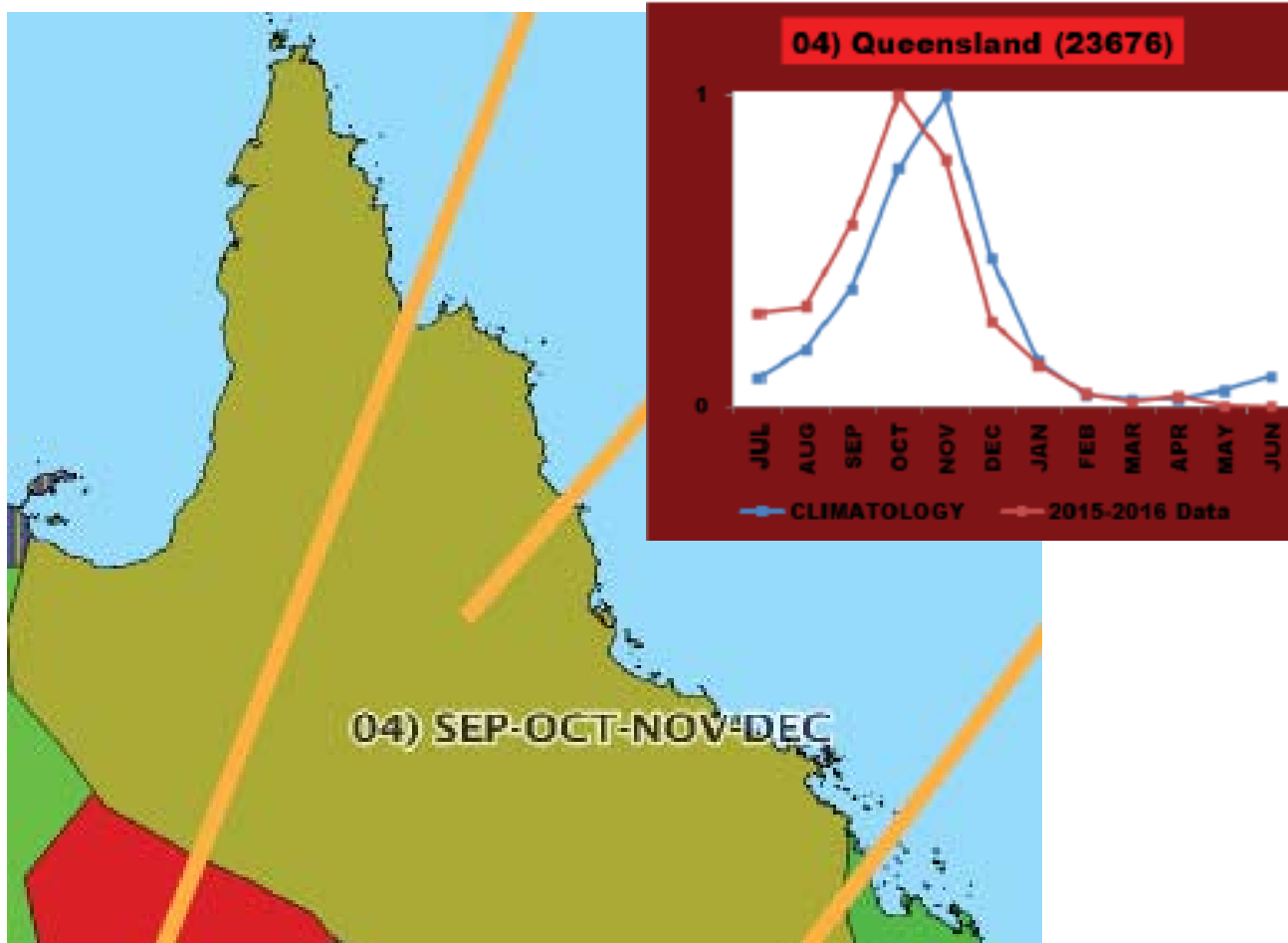
Northern Majors



Significant Fires
Greater than 10
vehicles and/or 12
hour duration

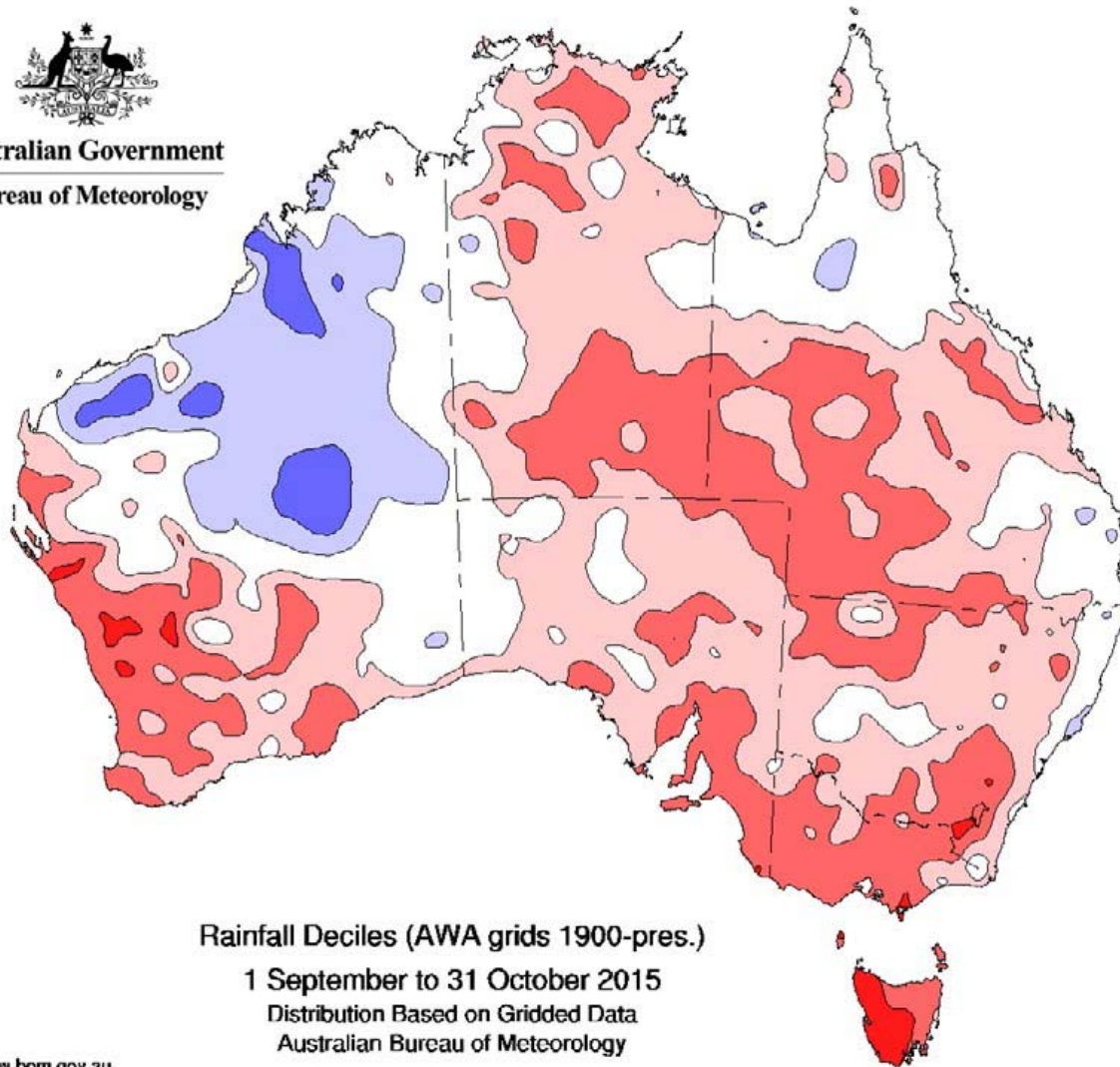


Climatology hotspot data shows an average of 3,000-10,000. 2016 had 23,676 hotspots detected

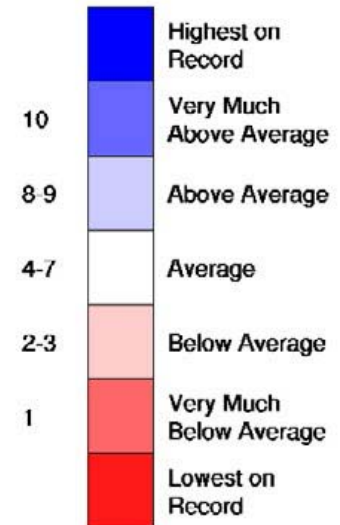


September-October Rainfall


Australian Government
Bureau of Meteorology



Rainfall Decile Ranges



Rainfall Deciles (AWA grids 1900-pres.)

1 September to 31 October 2015

Distribution Based on Gridded Data

Australian Bureau of Meteorology

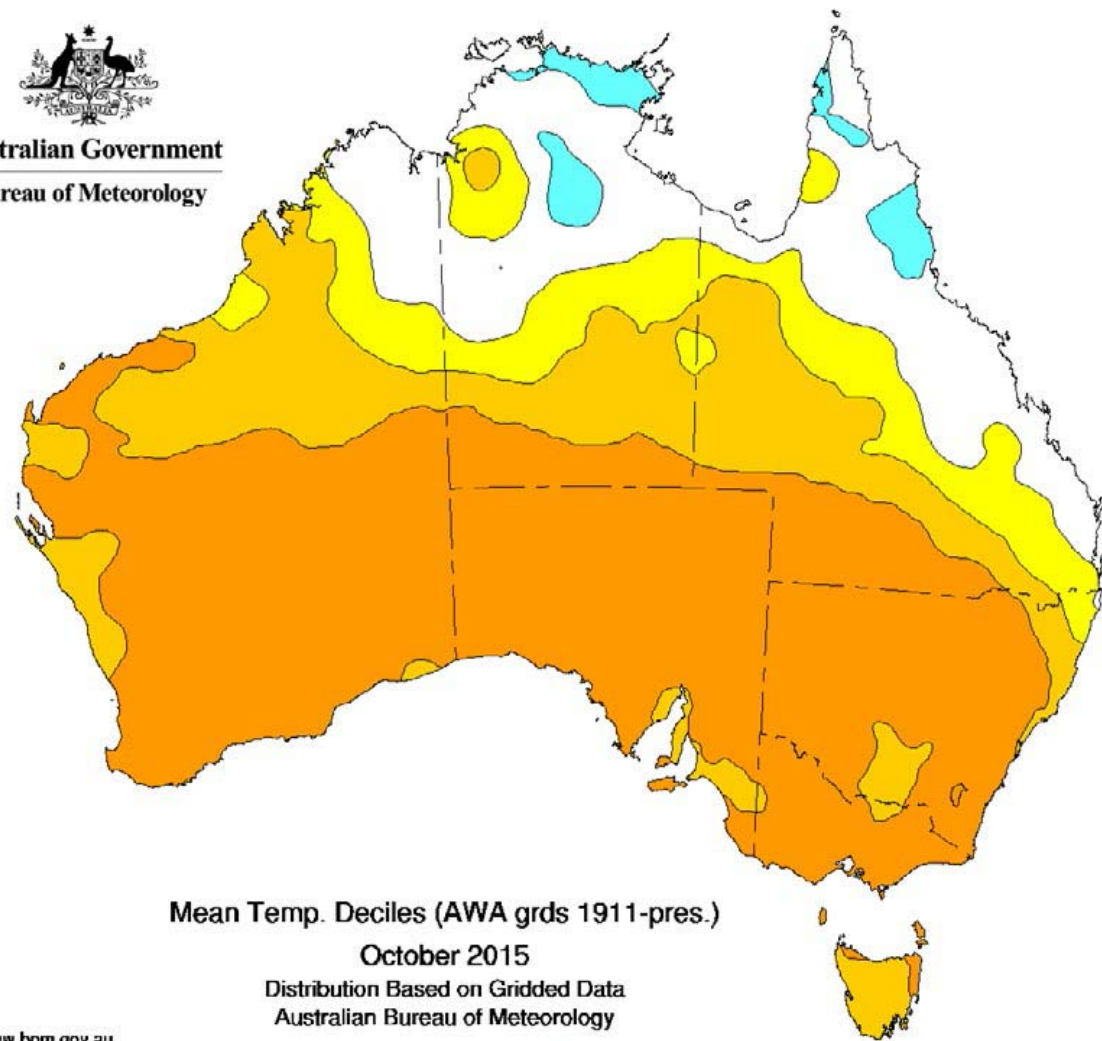
<http://www.bom.gov.au>



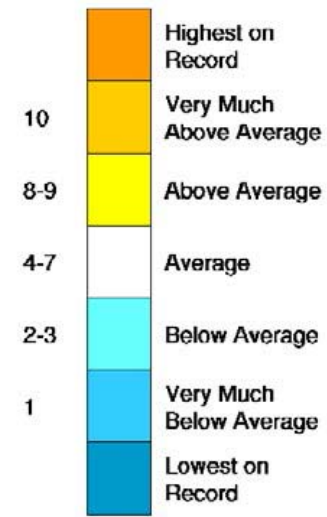
September-October Temperature



Australian Government
Bureau of Meteorology



Temp. Decile Ranges



Mean Temp. Deciles (AWA grds 1911-pres.)

October 2015

Distribution Based on Gridded Data
Australian Bureau of Meteorology

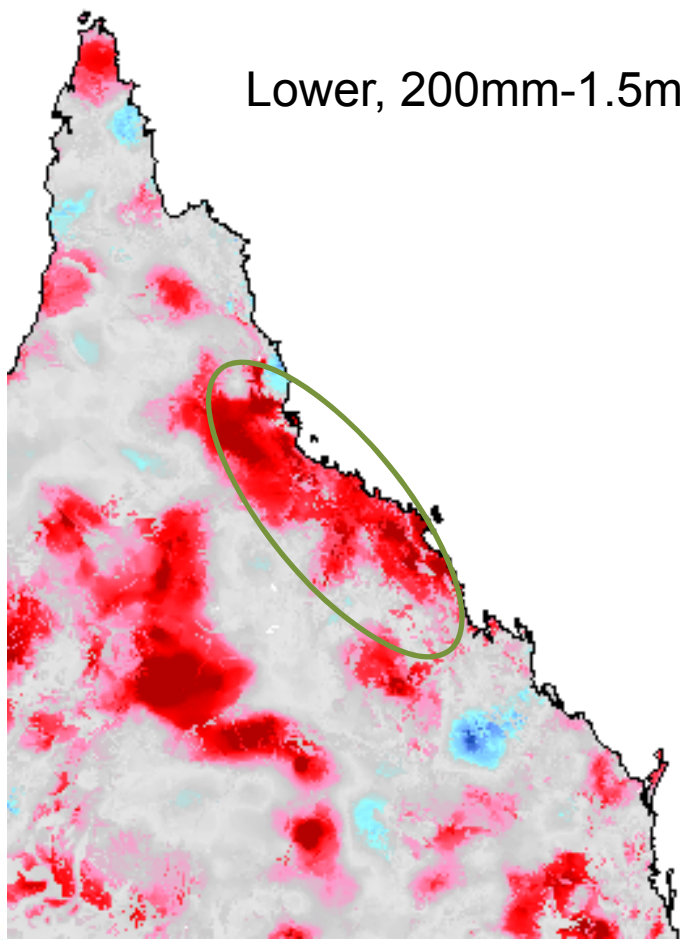
<http://www.bom.gov.au>



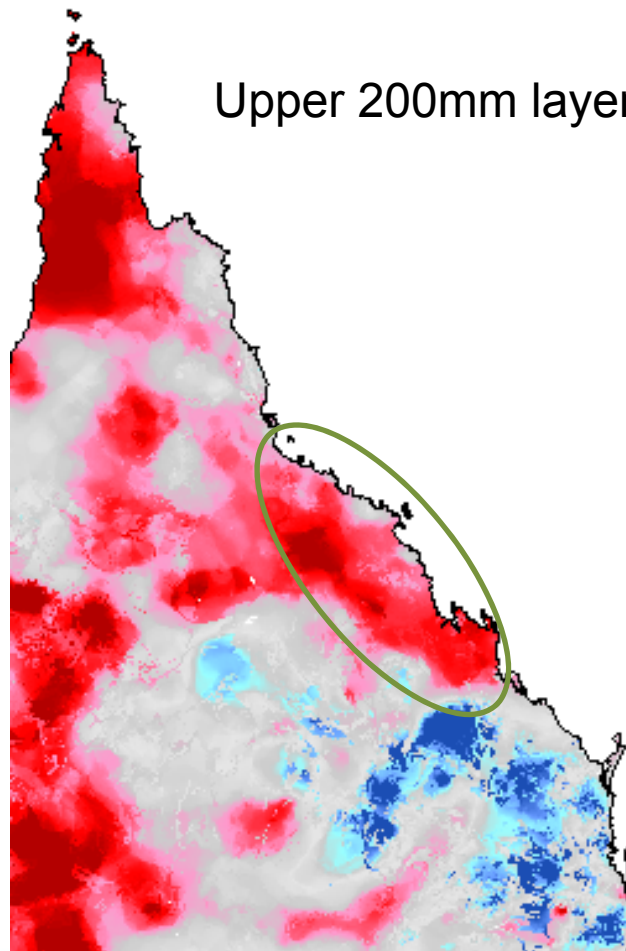
Australian Water Availability Project

Blue is higher soil moisture than the 1961-1990 average, red is drier than the week ending 1/11 average

Lower, 200mm-1.5m



Upper 200mm layer.



Summary

- Much of the Northern part of the State had a below average fire season
- Where there were high soil moisture deficits this correlated with above average fire activity
- Severe TC Marcia increased fine fuel loads around Rockhampton and there was increased fire activity in these areas

