



Australian Government

Bureau of Meteorology

Fire Weather Forecasting Services

Northern Australia Fire Managers Forum 2017





Australian Government

Bureau of Meteorology

Service Changes

- 7 days of Fire Weather grids
- 4 days of text-based Fire Weather forecast
- Fuel type determined on a grid-cell level
- Standardised District Weather Elements
- Curing values no longer rounded
- Online Spot Fire Forecast request system
- Changes to Registered User webpages



District Weather Elements

District Weather Elements for Thursday 8 June 2017

Issued at 4:30 am WST on Thursday 8 June 2017.

District	TAL	Prob Rain >5mm
North Kimberley Coast	0	0
West Kimberley Coast	0	0
Kimberley Inland	0	0
East Pilbara Coast	0	0
West Pilbara Coast	0	0
East Pilbara Inland	0	0
Ashburton Inland	0	0
Exmouth Gulf Coast	0	0
North Interior	0	0

District Weather Elements for Thursday 8 June 2017

Issued at 4:00 pm EST on Wednesday 7 June 2017.

Fire Area	TAL	cHaines	Prob Rain >5mm	1500m Wind (km/h)	Mix Height (m)
Peninsula	0	4	< 5	ESE 30	2100
Gulf Country	0	9	0	ESE 30	1700
Northern Goldfields and Upper Flinders	0	10	0	SE 25	1800
North Tropical Coast and Tablelands	0	9	0	ESE 25	1800
Herbert and Lower Burdekin	0	9	0	SSE 25	1700
Central Coast and Whitsundays	0	8	0	S 30	1500
Capricornia	0	6	0	S 40	1600
Central Highlands and Coalfields	0	6	0	S 30	1800
Central West	0	9	0	SSE 30	1700
North West	0	9	0	SE 35	1500
Channel Country	0	8	0	SSE 30	1400
Maranoa and Warrego	0	4	0	SSE 30	1800

3000m Wind (km/h)





Curing Values

Location Forecasts at Time of Maximum Fire Danger for Thursday 8 June 2017

Issued at 4:00 pm EST on Wednesday 7 June 2017.

	Regions	Time	Temp	RH	Wind (km/h)			Max T	Cur %	Fuel (t/Ha)	DF	Max FDI Fuel
					Dir	Speed	Gust					
Peninsula	Weipa	11	28	55	ESE	30	50	30	80	4.5	10	G
	Coen Airport	11	27	48	ESE	25	50	29	70	5.0	10	G
	Palmerville	15	30	24	SSE	10	20	37	60	5.0	10	G
Gulf Country	Normanton	14	27	15	SSE	25	45	28	75	4.5	10	G

Value included in forecast
will no longer be rounded

Will match Fire Weather
Bulletin value

Station	DF	Grass Curing %	Grass Load t/ha	Current Observations									
				Time EST	T	Td	RH	Wd	Ws km/h	Wg km/h	FFDR/FFDI	GFDR/GFDI	
Coen Ap	10	71	5.0	1130	27	15	47	SE	19	26	-	L-M 2	
Scherger RAAF	10	74	4.5	1130	26	19	65	SE	15	26	-	L-M 1	
Weipa Ap	10	78	4.5	1130	27	20	65	SE	17	26	-	L-M 2	
Burketown Ap	10	84	4.5	1130	23	-2	19	SSE	30	39	-	H 13	
Century Mine	10	82	4.5	1130	23	-4	16	ESE	11	26	-	L-M 3	
Kowanyama Ap	10	63	4.5	1130	27	10	34	SE	19	28	-	L-M 1	
Lockhart River Ap	10	64	5.0	1130	25	20	74	SE	28	43	-	L-M 1	
Normanton Ap	10	75	4.5	1130	24	0	20	SSE	19	28	-	L-M 3	



Australian Government

Bureau of Meteorology

Registered User Pages

Fire Weather Services for NSW Fire Agencies



[NSW Rural Fire Service Fire Weather Portal](#)

Tools for displaying and working with official Bureau of Meteorology weather forecast data. (Requires external login details)



Fire Danger Rating Estimates

Fire danger ratings estimates are routinely provided between September and March in line with the New South Wales bush fire danger period.

[Fire Weather Forecast](#)

[Preliminary Fire Weather Forecast](#)

[ACT Fire Weather Forecast](#)

[Preliminary ACT Fire Weather Forecast](#)



Four Day Outlook Products

Four day fire weather outlook products for forward planning and preparedness.

[Four Day Fire Weather Estimates](#)

[Four Day Fire Weather Maps](#)



Current Observations

Weather and ground moisture observations from Bureau automatic weather stations and Rural Fire Service portable weather stations.

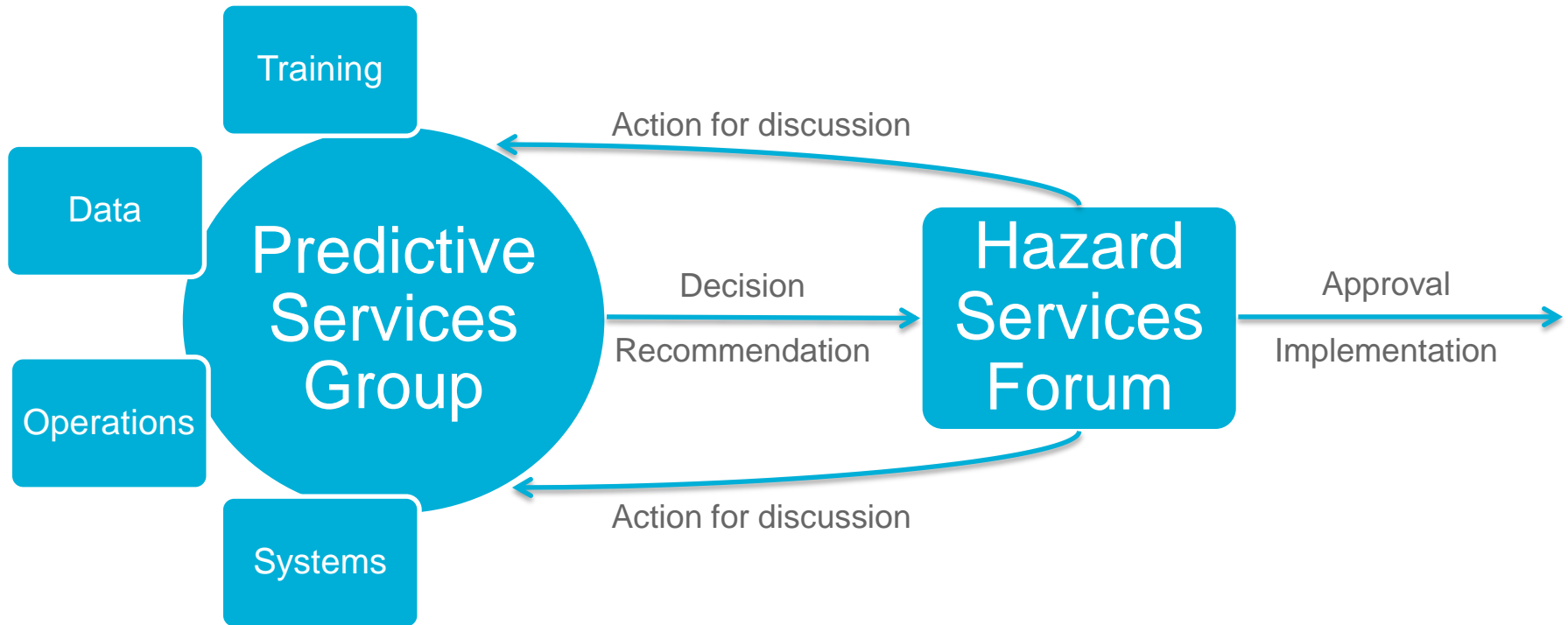
[Fire Weather Bulletin](#)

[Ground Moisture Bulletin](#)





Fire Weather Service Governance





Australian Government

Bureau of Meteorology

Spot Fire Forecasting Service Review

Aims;

- Document needs in context of bushfire/prescribed burn
- Identify needs not being meet
- Develop short and long term plans for service



Australian Government

Bureau of Meteorology

Spot Fire Forecasting Service Review

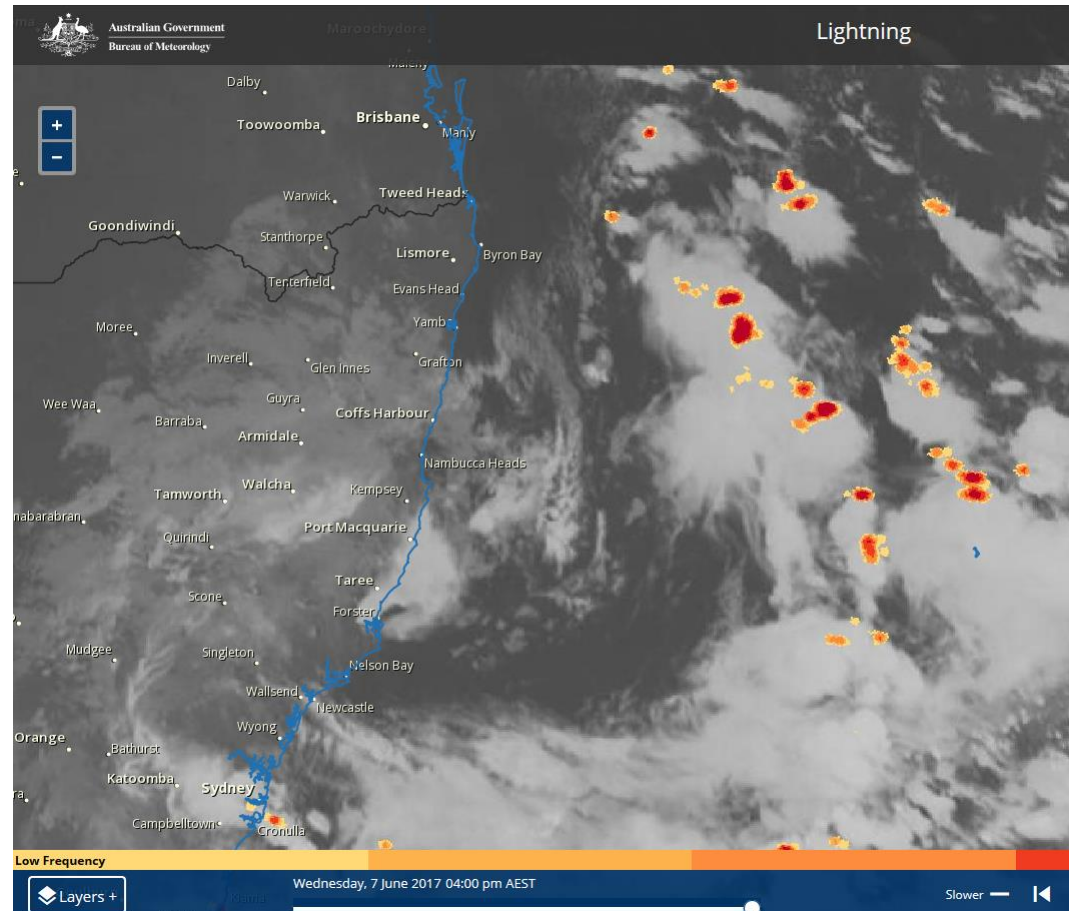
Date	Activity
20 April 2017	Feedback template sent to fire agency contacts for completion, with support from Bureau review team members
12 May 2017	Completed feedback templates returned to the Bureau
25 May 2017	Summary of key themes from the feedback distributed to all
13/14 June 2017	Workshop to discuss key issues and determine recommendations
29 June 2017	Workshop report drafted and distributed to all, with opportunity for feedback/clarification
28 July 2017	Prototype new product constructed and distributed to all for feedback
18 August 2017	Second round of prototyping to incorporate feedback from round 1
14 September 2017	Finalise recommendations and prototype and send paper to PSG for consideration / approval
October 2017 through 2018	Develop implementation plan for the approved service changes



Australian Government
Bureau of Meteorology

Lightning Data

Lightning observations
Himawari satellite viewer
<http://satview.bom.gov.au/>





Spot Fire Forecasts & Meteye

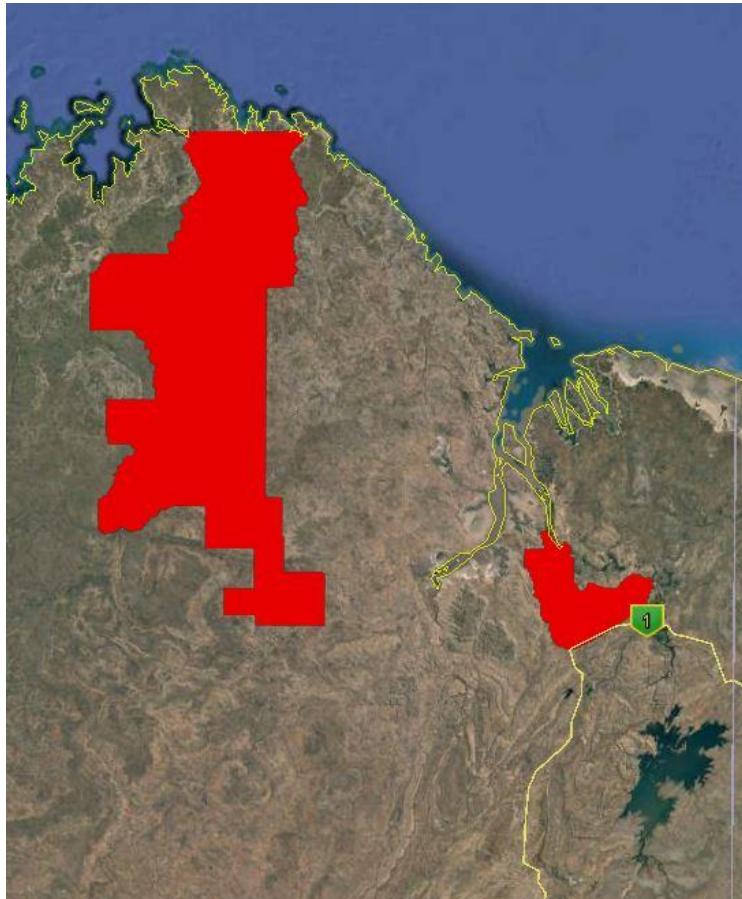
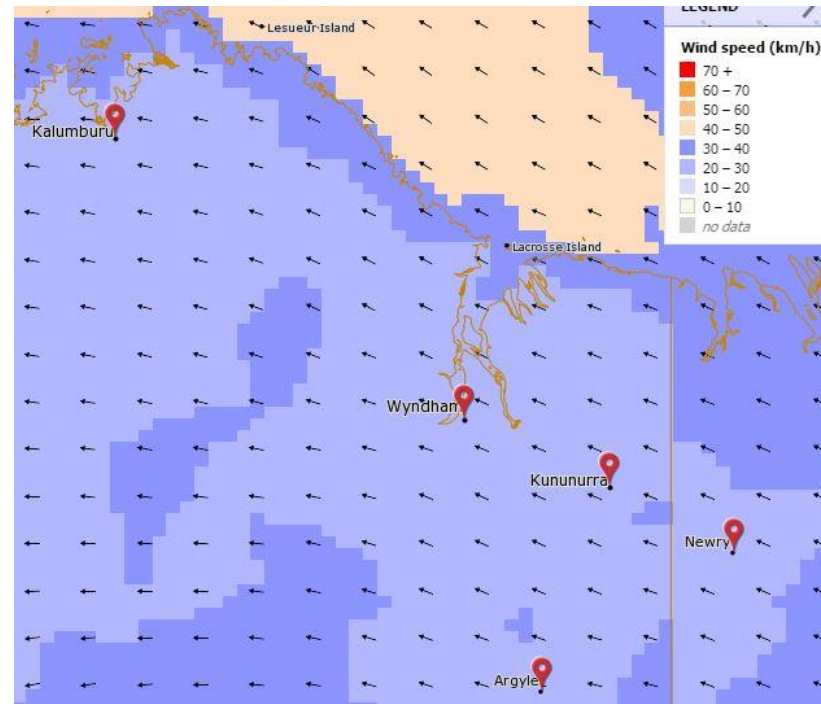


Image courtesy DPaW, Google Earth



- Trial for Kimberley, Goldfields and Pilbara



Australian Government

Bureau of Meteorology

Thank you...

Craig Earl-Spurr
craig.earl-spurr@bom.gov.au