

# OPERATION COOL BURN 2016

**James Haig**

Queensland Fire and Emergency Services

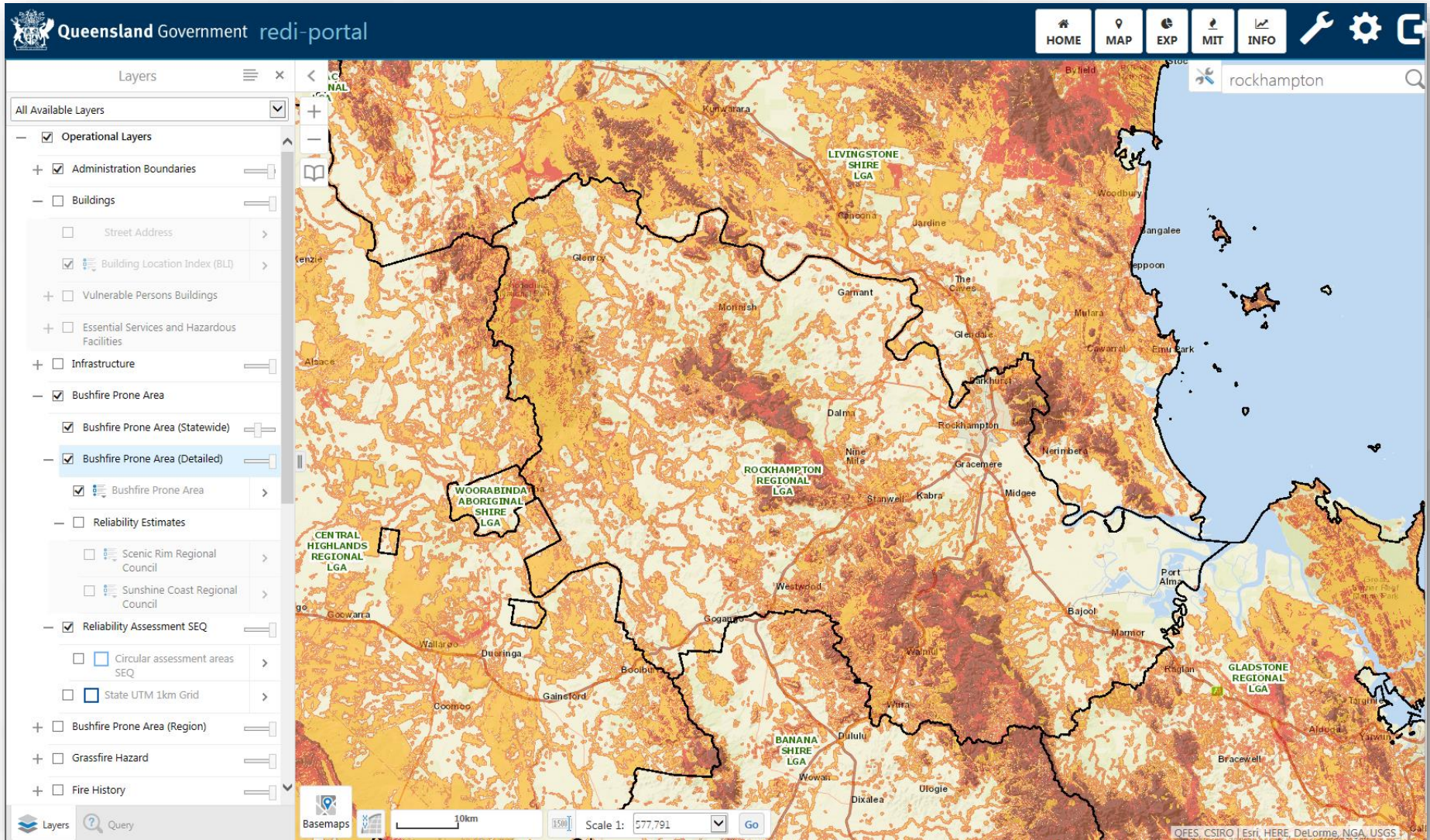
20 June 2017



# OCB 2016 PROCESS



# 1. Basic Mapping Data



# 2. Population and Building Data

redi-EXPOSURE | Nominated High Risk Bushfire Areas | Ver 2.9.1 | 10 May 2016

**Filters**

Local Gov..  Locality  Street

Rural Brig..  Station Are..

**LEGEND**  
Potential Bushfire Intensity

- 1 Very High
- 2 High
- 3 Medium

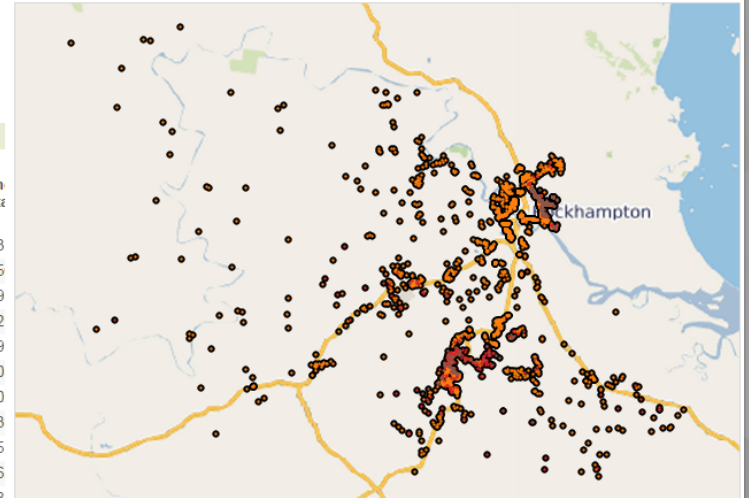
**Table 1a. Population in Bushfire Prone Area**

Locality	1 Very High	2 High	3 Medium	Grand Total
FRENCHVILLE	435	169	993	
THE RANGE			707	
NORMAN GAR..	274	181	247	
KOONGAL	43	71	583	
MOUNT MORG..	31	28	631	
KAWANA			532	
BOULDERCOM..	10	17	349	
PARKHURST		2	330	
WEST ROCKH..			314	
BERSERKER			275	
BAJOO	2	10	211	
LAKES CREEK	32	54	105	
GRACEMERE			186	
PINK LILY			174	
STANWELL		11	163	
LIMESTONE C..		7	140	
WANDAL			147	
BAREE	11	45	85	
ALTON DOWNS			131	
STRUCK OIL	11	86	20	
HAMILTON CR..		22	80	
MOONGAN	9	52	39	
WALTERHALL	2	19	74	
HORSE CREEK		13	75	
MOUNT ARCH..	44	18	17	

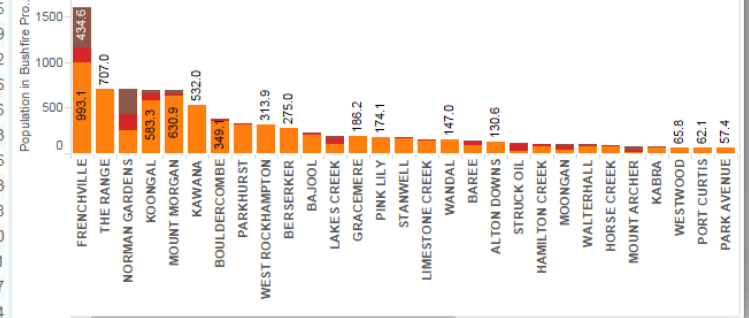
**Table 1b. Buildings in Bushfire Interface Zone**

Locality	A Vulnerable Persons Buildings	B Essential & Hazardous	C Residential Buildings	D Industrial, Commercial, Agricultural	Grand Total
FRENCHVILLE	1	5	621	106	73
THE RANGE	1		329	26	35
NORMAN GAR..		1	361	132	49
KOONGAL		2	297	21	32
MOUNT MORG..	3	7	458	129	59
KAWANA	9	34	211	54	30
BOULDERCOM..		1	328	73	40
PARKHURST	1	2	159	68	23
WEST ROCKH..	3	7	167	74	25
BERSERKER		1	135	32	16
BAJOO		18	115	150	28
LAKES CREEK		10	116	18	14
GRACEMERE	8	1	107	42	15
PINK LILY			149	42	19
STANWELL		11	148	65	22
LIMESTONE C..			126	36	16
WANDAL	1		61	3	6
BAREE			123	12	13
ALTON DOWNS		2	107	55	16
STRUCK OIL			82	54	13
HAMILTON CR..	6		63	18	8
MOONGAN			87	22	10
WALTERHALL			84	130	21
HORSE CREEK	10	2	50	15	7
MOUNT ARCH..		3	43	2	4

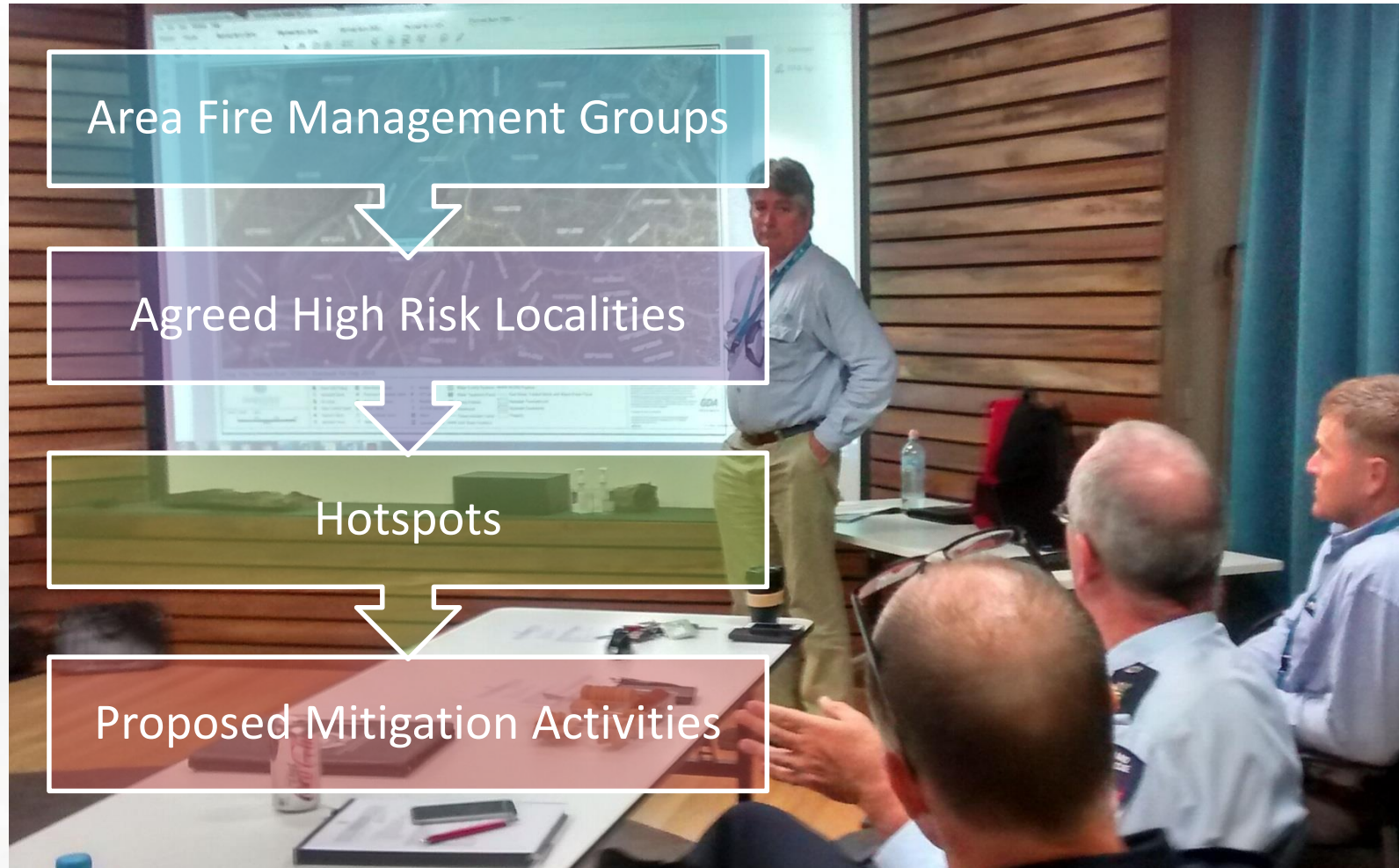
**Map 1. Buildings in Bushfire Prone Area**



**Graph 2. Population in Bushfire Prone Area x Locality**



# 3. AFMG Bushfire Risk Prioritisation





**ROCKHAMPTON FIRE MANAGEMENT GROUP**

**ROCKHAMPTON REGIONAL COUNCIL**

**OPERATION COOL BURN 2016  
BUSHFIRE RISK MITIGATION PLAN**

**1 May 2016 to 31 July 2016**

**30 JUNE 2016**

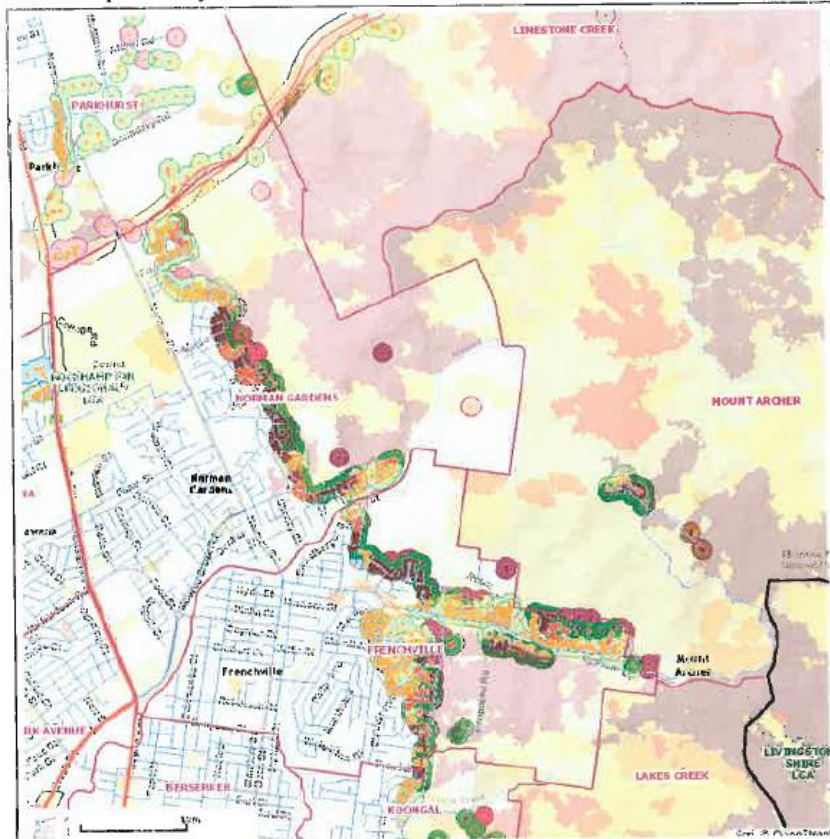
## 5. Membership

Members of the Rockhampton AFMG March 2016 are listed below:

Name	Position Title	Organisation	Email Address
Wayne Kapernick	Area Director	QFES- RFSQ- Rockhampton	<a href="mailto:Wayne.Kapernick@qfes.qld.gov.au">Wayne.Kapernick@qfes.qld.gov.au</a>
Craig Adams	Bushfire Safety Officer	QFES – RFSQ - Central	<a href="mailto:Craig.Adams@qfes.qld.gov.au">Craig.Adams@qfes.qld.gov.au</a>
Steve Shaw	Izone Officer	QFES – F & R - Central	<a href="mailto:Stephen.Shaw@qfes.qld.gov.au">Stephen.Shaw@qfes.qld.gov.au</a>
Col May	Zone Commander	QFES – F & R - Rockhampton	<a href="mailto:Colin.May@qfes.qld.gov.au">Colin.May@qfes.qld.gov.au</a>
Sam Williams	Disaster Management Officer	Rockhampton Regional Council	<a href="mailto:Sam.williams@rrc.qld.gov.au">Sam.williams@rrc.qld.gov.au</a>
Scott Brook	Ranger in Charge	QPWS Rockhampton	<a href="mailto:scott.brook@nprsr.qld.gov.au">scott.brook@nprsr.qld.gov.au</a>
Des Buckenham	Senior Ranger	Dept Natural Resources and Mines	<a href="mailto:des.buckenham@dnrm.qld.gov.au">des.buckenham@dnrm.qld.gov.au</a>
Colin Weeks	Fitzroy Group Officer	QFES – RFSQ - Rockhampton	<a href="mailto:kelcolin@bigpond.com">kelcolin@bigpond.com</a>
Dion Auriac		Transport and Main Roads	<a href="mailto:Dion.p.auriac@tmr.qld.gov.au">Dion.p.auriac@tmr.qld.gov.au</a>
Lionel Toon	Stanwell Rural Fire Brigade	RFSQ	
Darrell Kelly	Kalapa Rural Fire Brigade	RFSQ	
Craig Magick	Area Director	QFES- RFSQ - Gladstone	<a href="mailto:Craig.Magick@qfes.qld.gov.au">Craig.Magick@qfes.qld.gov.au</a>
Shaun Weldon		Queensland Rail	<a href="mailto:shaun.weldon@qr.com.au">shaun.weldon@qr.com.au</a>
Vic Maluga	Assets Manager	Aurizon	
Nigel Holmes		Environmental Heritage protection	<a href="mailto:nigel.holmes@shp.qld.gov.au">nigel.holmes@shp.qld.gov.au</a>
Dan Witten		QPWS – Parks & Wildlife	<a href="mailto:Dan.witten@nprsr.qld.gov.au">Dan.witten@nprsr.qld.gov.au</a>
Michelle Brook		QPWS – Parks & Wildlife	<a href="mailto:michelle.brook@nprsr.qld.gov.au">michelle.brook@nprsr.qld.gov.au</a>
Reuben Whitlock		Ergon Energy	<a href="mailto:reuben.whitlock@ergon.com.au">reuben.whitlock@ergon.com.au</a>
Robert Ferguson	Area Director	QFES – QFRS Rockhampton	<a href="mailto:Robert.Ferguson@qfes.qld.gov.au">Robert.Ferguson@qfes.qld.gov.au</a>
Ewan Cayzer	Assistant Commissioner	QFES – QFRS Central	<a href="mailto:Ewan.Cayzer@qfes.qld.gov.au">Ewan.Cayzer@qfes.qld.gov.au</a>

## 7.2 AFMG Priority Localities

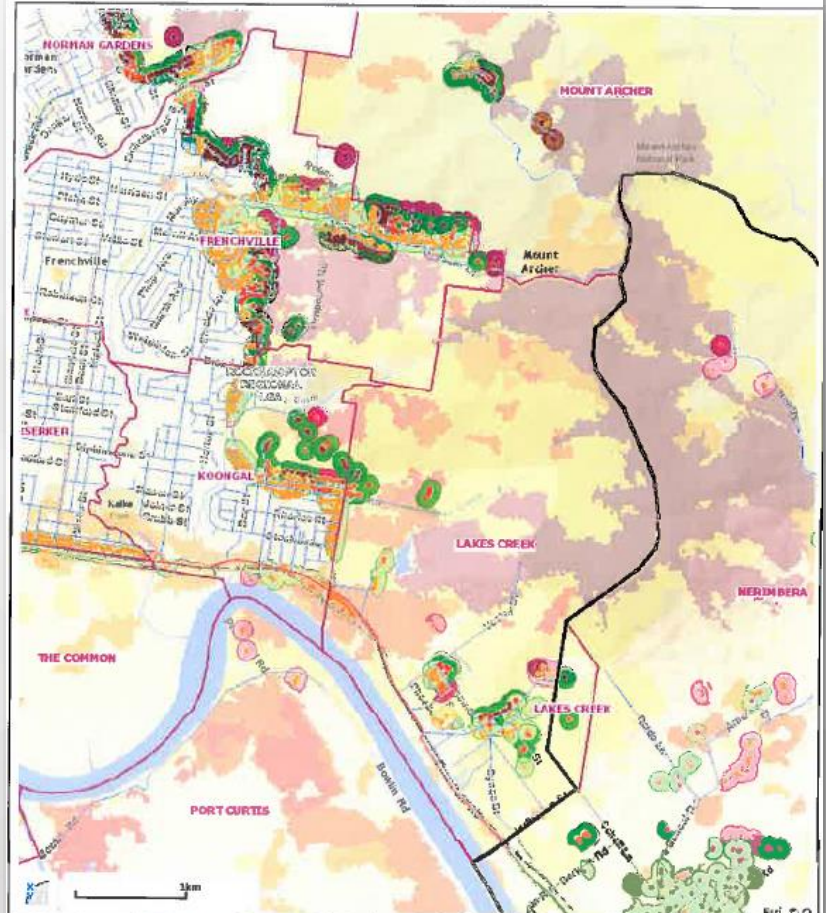
### 7.2.1 Map 8. Priority 1 & 2 & 3 – Frenchville, Norman Gardens and Mount Archer



Legend	Category A – Vulnerable assets	Category C – Residential buildings and facilities	Category E – Roads	
	<ul style="list-style-type: none"> <li>A1 Very High Hazard (A1)</li> <li>A2 High Hazard (A2)</li> <li>A3 Medium Hazard (A3)</li> </ul>	<ul style="list-style-type: none"> <li>C1 Very High Hazard (C1)</li> <li>C2 High Hazard (C2)</li> <li>C3 Medium Hazard (C3)</li> </ul>	<ul style="list-style-type: none"> <li>E1 Very High Hazard (E1)</li> <li>E2 High Hazard (E2)</li> <li>E3 Medium Hazard (E3)</li> </ul>	<ul style="list-style-type: none"> <li>High Hazard (H)</li> <li>Medium Hazard (M)</li> <li>Low Hazard (L)</li> </ul>
	<ul style="list-style-type: none"> <li>B1 Very High Hazard (B1)</li> <li>B2 High Hazard (B2)</li> <li>B3 Medium Hazard (B3)</li> </ul>	<ul style="list-style-type: none"> <li>D1 Very High Hazard (D1)</li> <li>D2 High Hazard (D2)</li> <li>D3 Medium Hazard (D3)</li> </ul>	<ul style="list-style-type: none"> <li>Very High Hazard (VH)</li> <li>High Hazard (H)</li> <li>Medium Hazard (M)</li> <li>Low Hazard (L)</li> </ul>	<ul style="list-style-type: none"> <li>Very High Hazard (VH)</li> <li>High Hazard (H)</li> <li>Medium Hazard (M)</li> <li>Low Hazard (L)</li> </ul>
<ul style="list-style-type: none"> <li>Landuse Fire Score 2014</li> <li>Landuse Fire Score 2015</li> <li>Landuse Fire Score 2016</li> </ul>	<ul style="list-style-type: none"> <li>Landuse Fire Score 2014</li> <li>Landuse Fire Score 2015</li> </ul>	<ul style="list-style-type: none"> <li>Landuse Fire Score 2014</li> <li>Landuse Fire Score 2015</li> </ul>	<ul style="list-style-type: none"> <li>Landuse Fire Score 2014</li> <li>Landuse Fire Score 2015</li> </ul>	

Mount Archer has a fire management plan lead by QPWS. 2015 fires occurred South of the Yeppoon Road from Sunset Avenue, Norman Gardens to Kilpatrick's Track near access 9. The Mount Archer community is accessed via a one-way access, Pilbeam Drive. A fire line has been established for mitigation and wildfire purposes at the foothills of Mount Archer. Mount Archer planned mitigation burn activities are near Guthrie Street and south east of the Mount Archer Community.

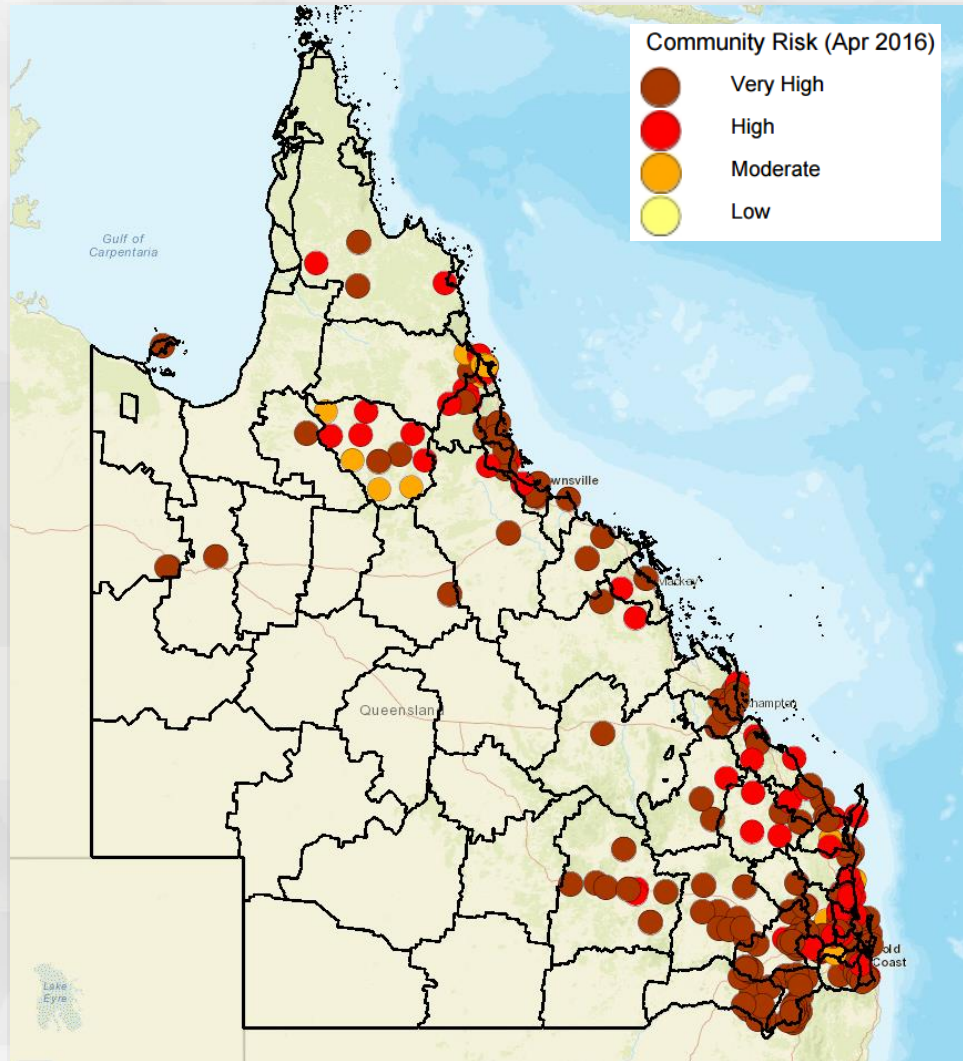
### 7.2.2 Map 9. Priority 4 & 5 – Koongal & Lakes Creek



Legend	Category A – Vulnerable assets	Category C – Residential buildings and facilities	Category E – Roads	
	<ul style="list-style-type: none"> <li>A1 Very High Hazard (A1)</li> <li>A2 High Hazard (A2)</li> <li>A3 Medium Hazard (A3)</li> </ul>	<ul style="list-style-type: none"> <li>C1 Very High Hazard (C1)</li> <li>C2 High Hazard (C2)</li> <li>C3 Medium Hazard (C3)</li> </ul>	<ul style="list-style-type: none"> <li>E1 Very High Hazard (E1)</li> <li>E2 High Hazard (E2)</li> <li>E3 Medium Hazard (E3)</li> </ul>	<ul style="list-style-type: none"> <li>Very High Hazard (VH)</li> <li>High Hazard (H)</li> <li>Medium Hazard (M)</li> <li>Low Hazard (L)</li> </ul>
	<ul style="list-style-type: none"> <li>B1 Very High Hazard (B1)</li> <li>B2 High Hazard (B2)</li> <li>B3 Medium Hazard (B3)</li> </ul>	<ul style="list-style-type: none"> <li>D1 Very High Hazard (D1)</li> <li>D2 High Hazard (D2)</li> <li>D3 Medium Hazard (D3)</li> </ul>	<ul style="list-style-type: none"> <li>Very High Hazard (VH)</li> <li>High Hazard (H)</li> <li>Medium Hazard (M)</li> <li>Low Hazard (L)</li> </ul>	<ul style="list-style-type: none"> <li>Very High Hazard (VH)</li> <li>High Hazard (H)</li> <li>Medium Hazard (M)</li> <li>Low Hazard (L)</li> </ul>
<ul style="list-style-type: none"> <li>Landuse Fire Score 2010</li> <li>Landuse Fire Score 2011</li> <li>Landuse Fire Score 2012</li> </ul>	<ul style="list-style-type: none"> <li>Landuse Fire Score 2010</li> <li>Landuse Fire Score 2011</li> </ul>	<ul style="list-style-type: none"> <li>Landuse Fire Score 2010</li> <li>Landuse Fire Score 2011</li> </ul>	<ul style="list-style-type: none"> <li>Landuse Fire Score 2010</li> <li>Landuse Fire Score 2011</li> </ul>	

Mount Archer has a fire management plan lead by QPWS. 2015 fires occurred along the range near Mount Dick on the Berserker Ranges in the Lakes Creek, Nerimbera area behind the holding yards for the meatworks. A fire line has been established for mitigation and wildfire purposes at the foothills of Mount Archer. Mount Archer planned mitigation burn activities are near Rockonia Road in the Koongal, Lake Creek area.

# 4. Community Risk (April 2016)





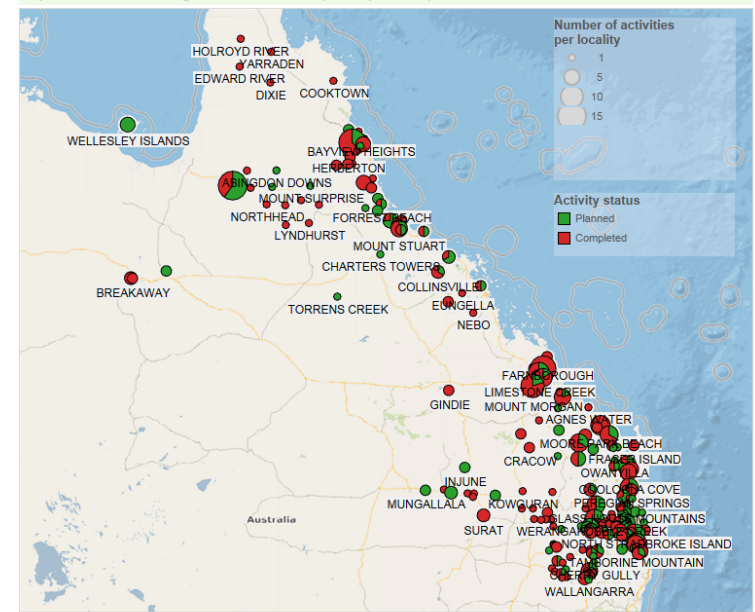
# 5. Mitigation Activity Status (end OCB)

Operation Cool Burn 2016 | Progress Report 12 | 13 September 2016

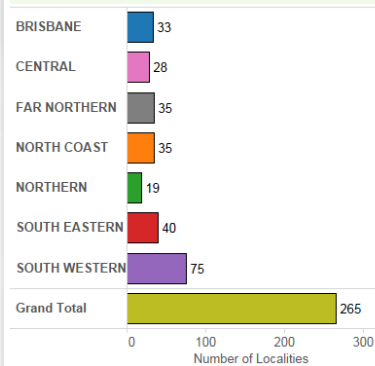
Table 1. Number of mitigation activities in priority areas

QFES Region	Hazard Reduction Burn			Firebreak or Trail			Community Education			Grand Total
	Planned	Completed	Total	Planned	Completed	Total	Planned	Completed	Total	
BRISBANE	26	9	35				10	5	15	50
CENTRAL	11	31	42	1	15	16	1	18	19	77
FAR NORTHERN	12	13	25	1	18	19	11	17	28	72
NORTH COAST	28	29	57		10	10	11	16	27	94
NORTHERN	11	4	15	8	12	20	6	5	11	46
SOUTH EASTERN	7	21	28		1	1	20	40	60	89
SOUTH WESTERN	25	15	40	2	11	13	15	51	66	119
Grand Total	120	122	242	12	67	79	74	152	226	547

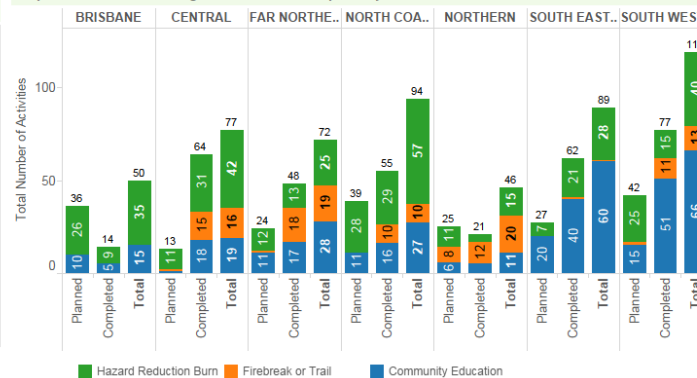
Map 1. Number of mitigation activities in priority areas | All REGION



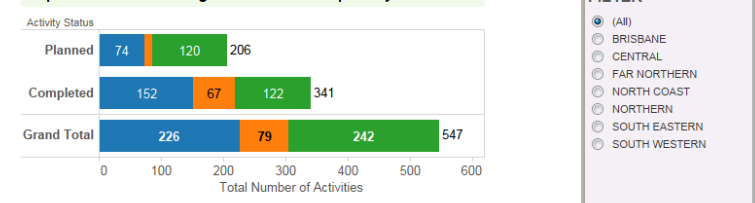
Graph 1. Number of bushfire prone localities with an identified high risk



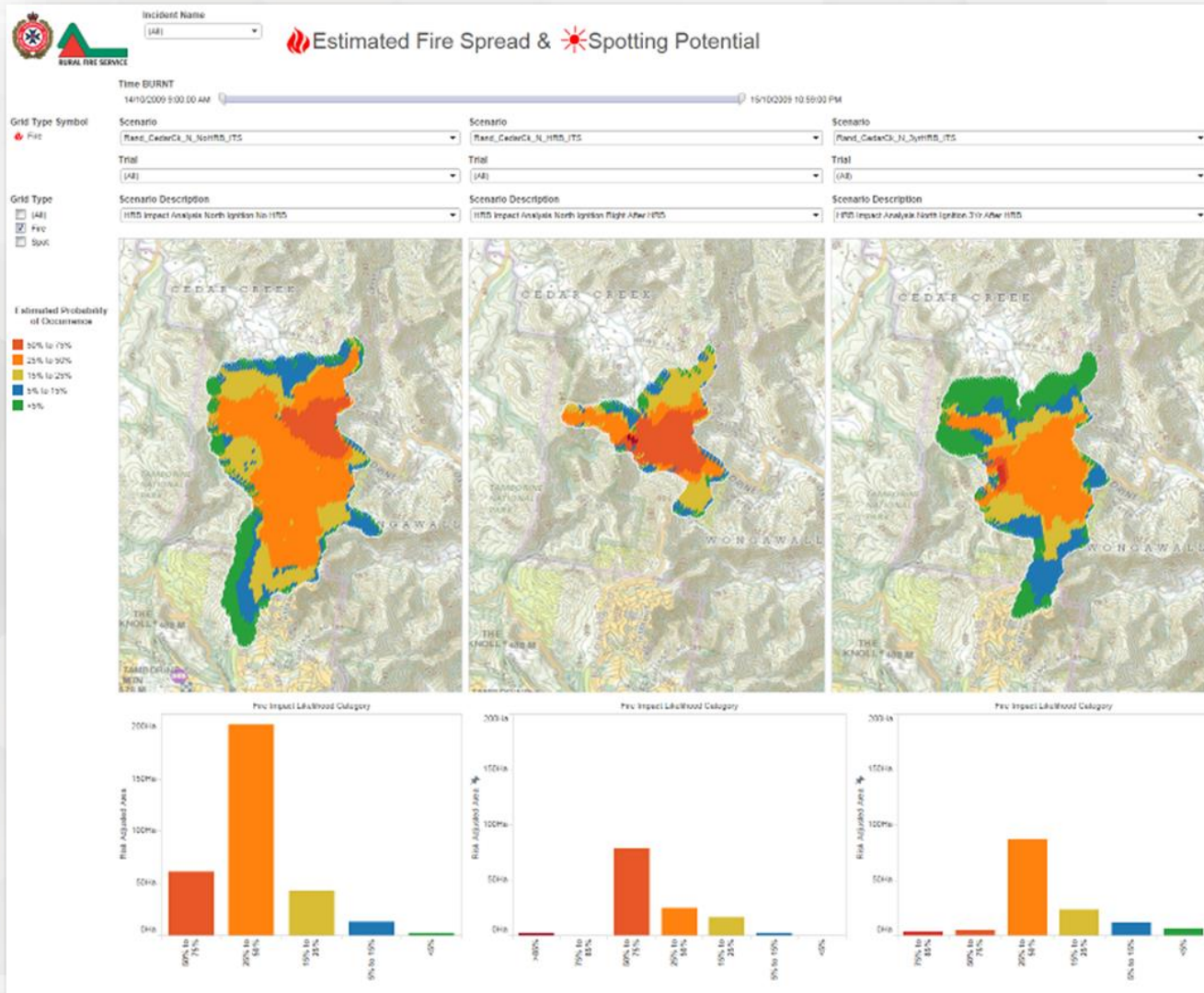
Graph 2. Number of mitigation activities in priority areas



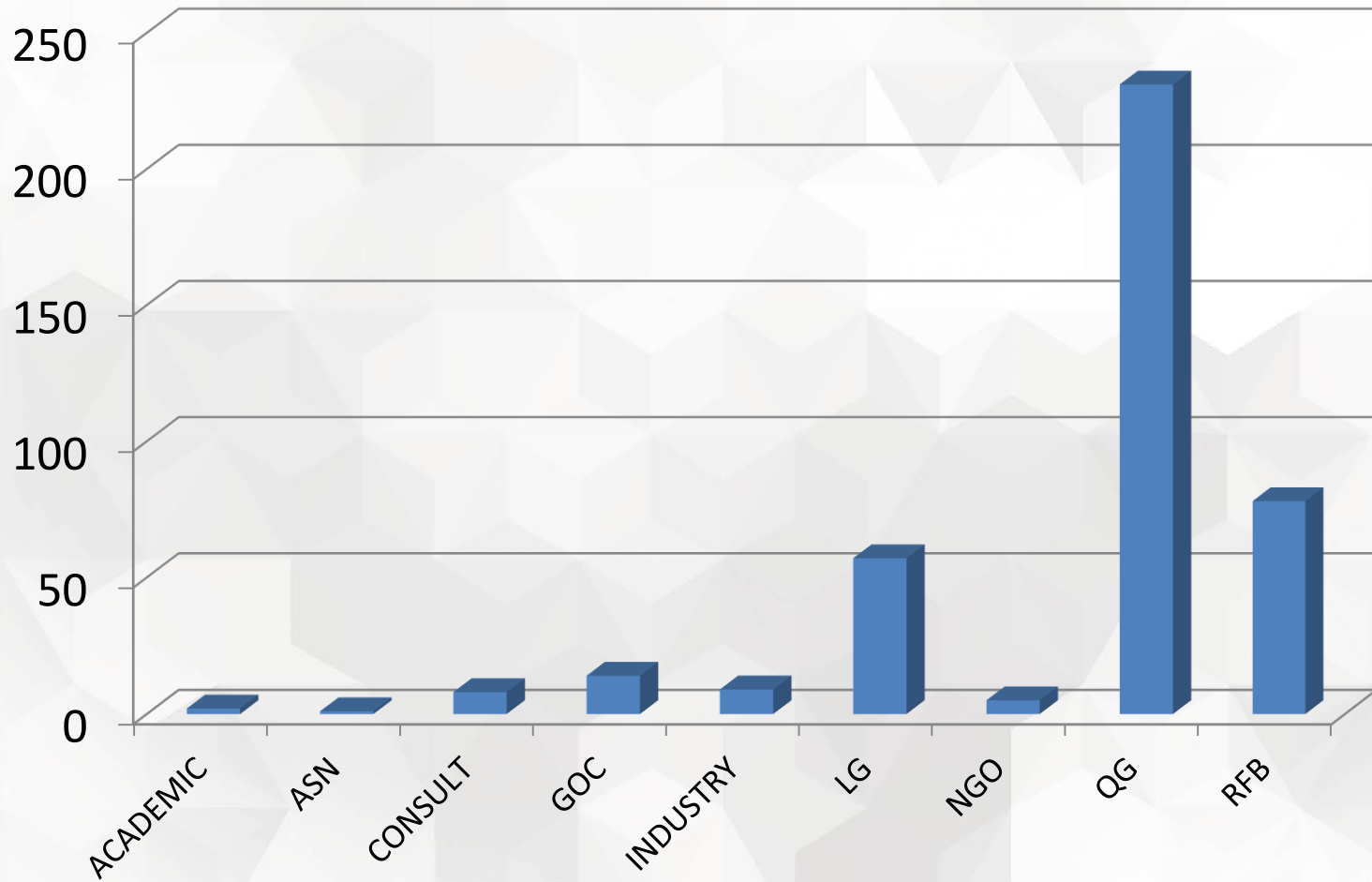
Graph 3. Number of mitigation activities in priority areas



# Evaluation of mitigation actions



# REDI-PORTAL Users (Sep 2016)



# Towards OCB 2017

OCB 2016 Review

Updated OCB 2017 Strategic Plan

Updated OCB 2017 BRMP Template and Rolling Plan Approach

REDI-PORTAL Roll-out to Rural Brigades, Agencies, Local Governments

AFMG Pre-season planning for OCB 2017

Improved Evaluation and Data Capture for OCB 2017

# Further Questions

