

# North Australia Fire Managers Forum

Western Australian Update

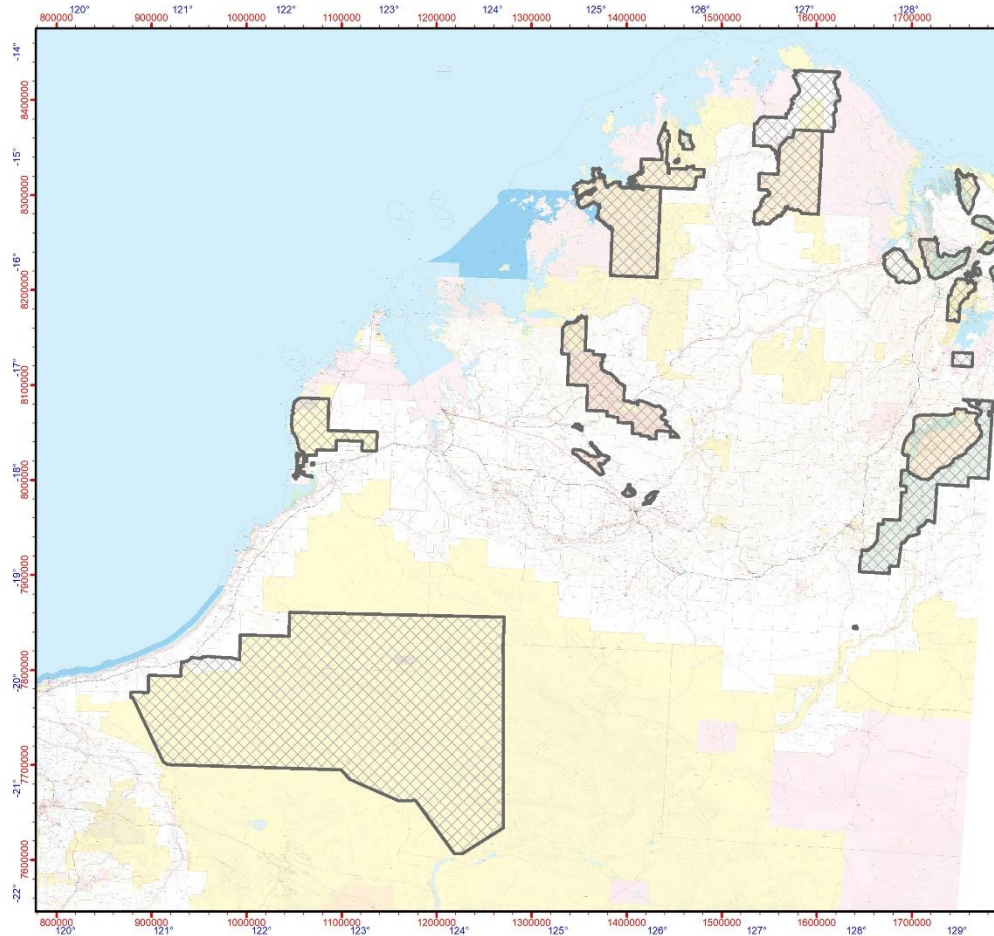


Department of Biodiversity,  
Conservation and Attractions

GOVERNMENT OF  
WESTERN AUSTRALIA



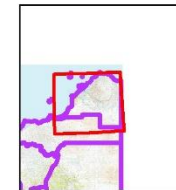
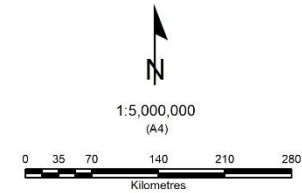
# Indicative Burn Program



## Parks and Wildlife Indicative Burn Program 2018/2019

### Legend

 BPP\_AU19\_KIMBERLEY\_2018\_12\_17



Produced by the  
Department of  
Biodiversity, Conservation  
and Attractions



Graticule shown at 1 degree intervals  
Grid shown at 100000 metre intervals

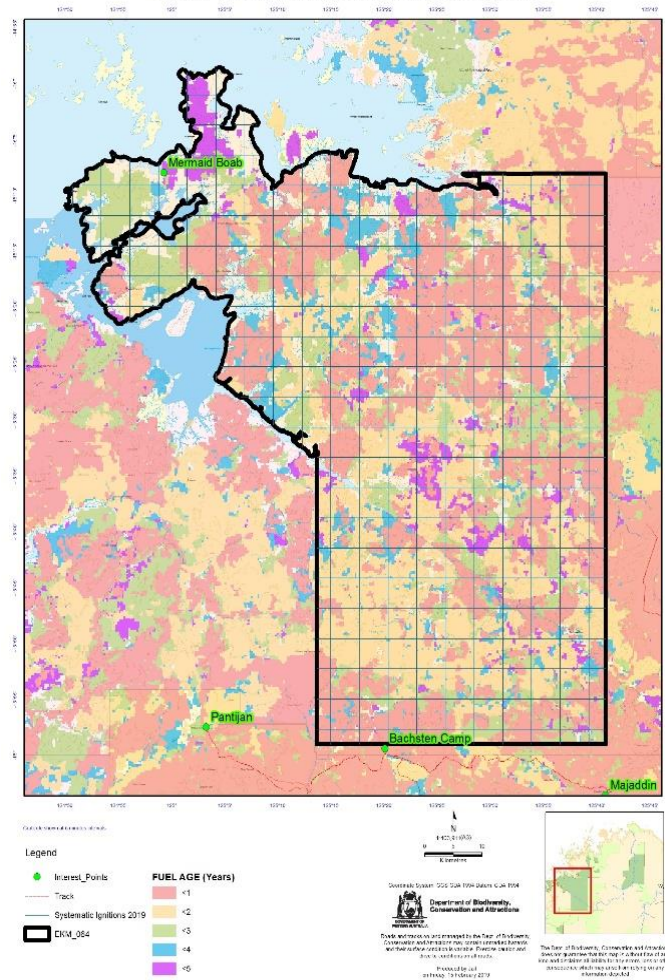
The Dept. of Biodiversity, Conservation and Attractions does not guarantee that this map is without flaw of any kind and disclaims all liability for any errors, loss or other consequence which may arise from relying on any information depicted.

Roads and tracks on land managed by DBCA may contain unmarked hazards and their surface condition is variable. Exercise caution and drive to conditions on all roads.

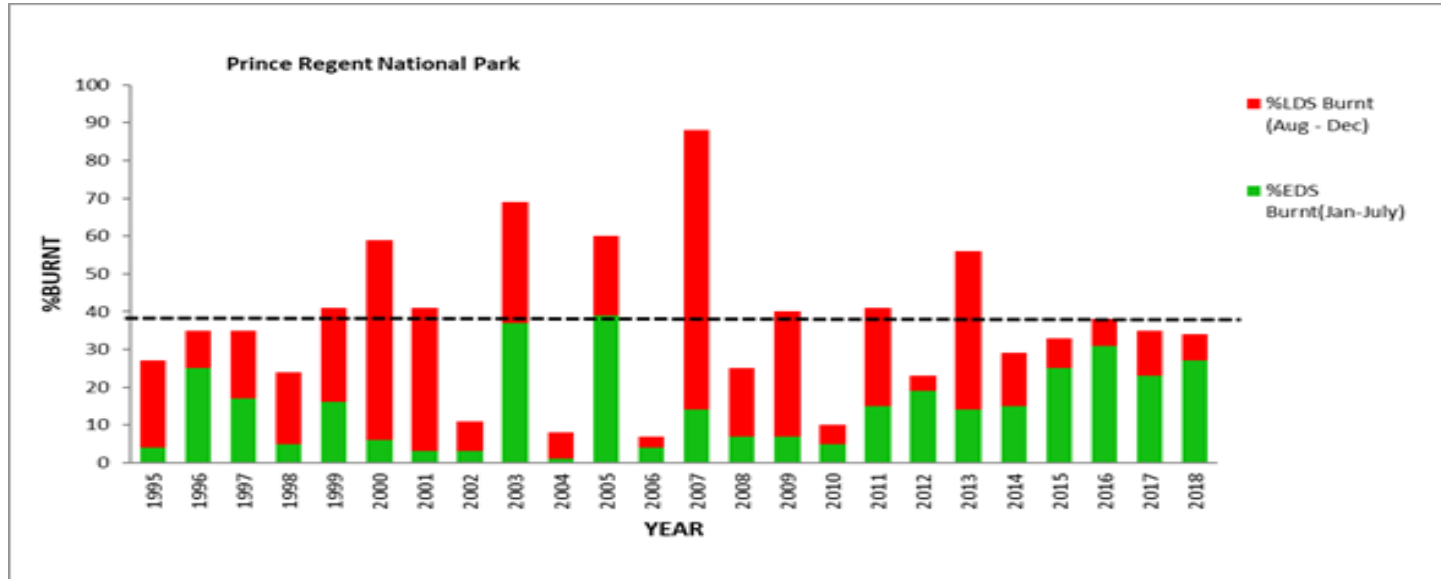
Produced at 1:16pm, on Mar 14, 2019

# Prince Regent NP

EKM\_064 - Prince Regent National Park - Operations Map - 585,328 ha

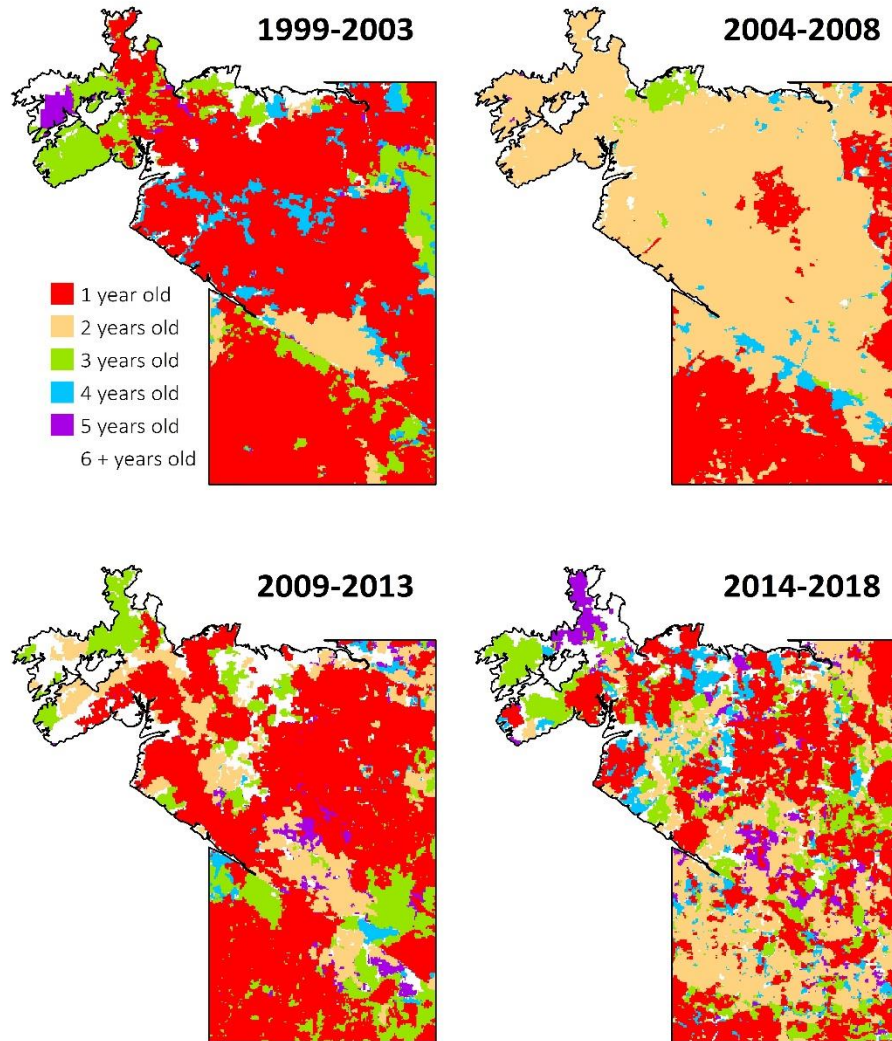


# Prince Regent NP

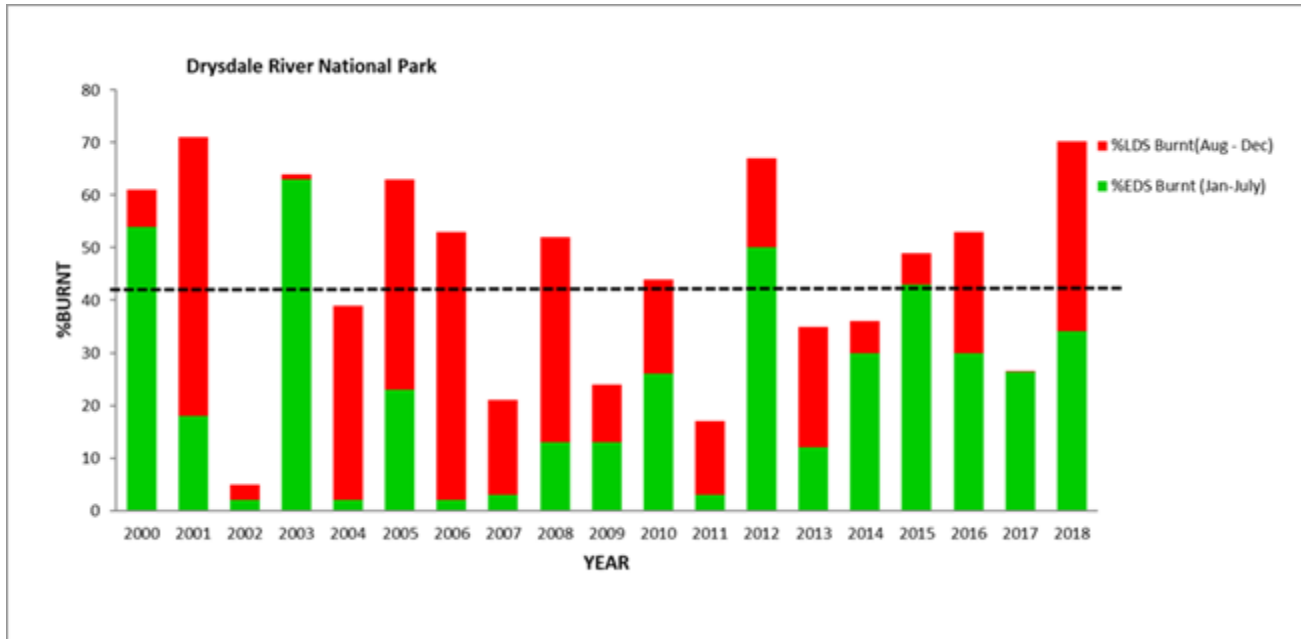


Year	%EDS Burnt (Jan-July)	%LDS Burnt (Aug - Dec)	Total % Area Burnt
2010	5	5	10
2011	15	26	41
2012	19	4	23
2013	14	42	56
2014	15	14	29
2015	25	8	33
2016	31	7	38
2017	23	12	35
2018	27	7	34
<b>Average</b>	<b>19.3</b>	<b>13.9</b>	<b>33.2</b>

# Prince Regent NP

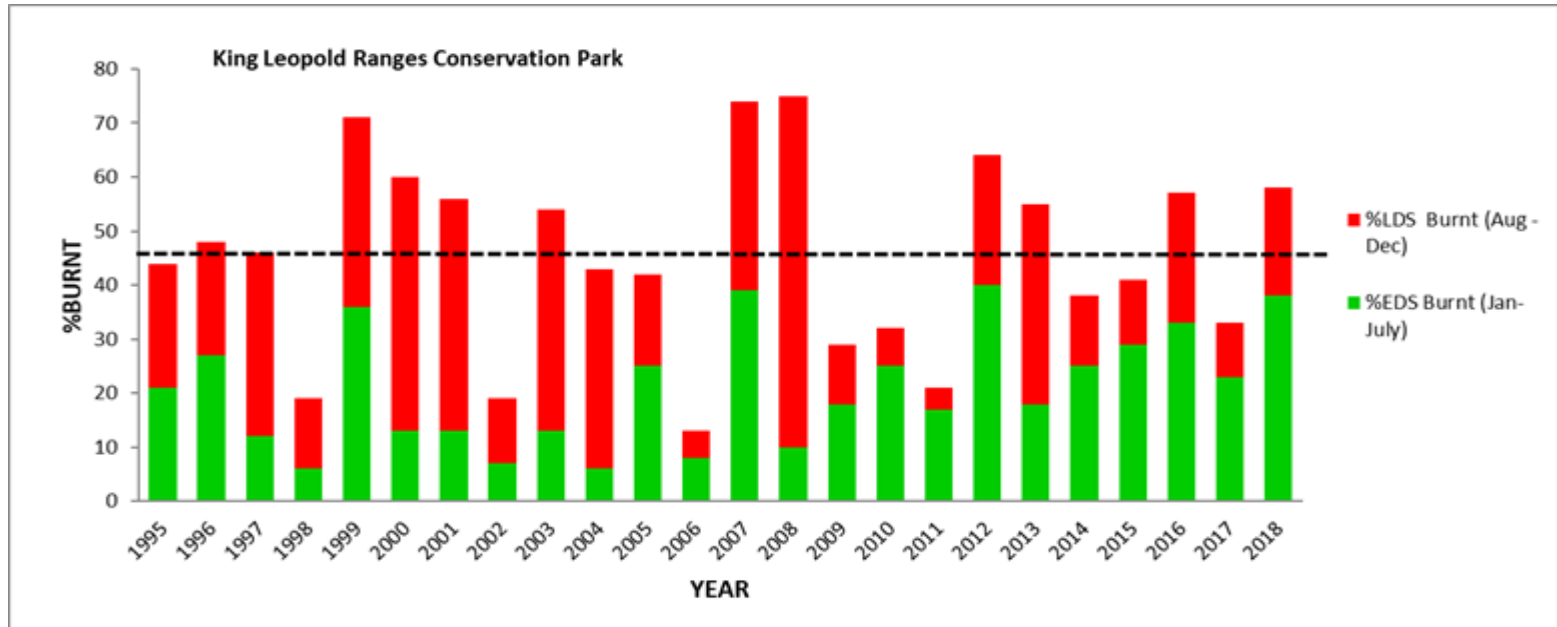


# Drysdale NP



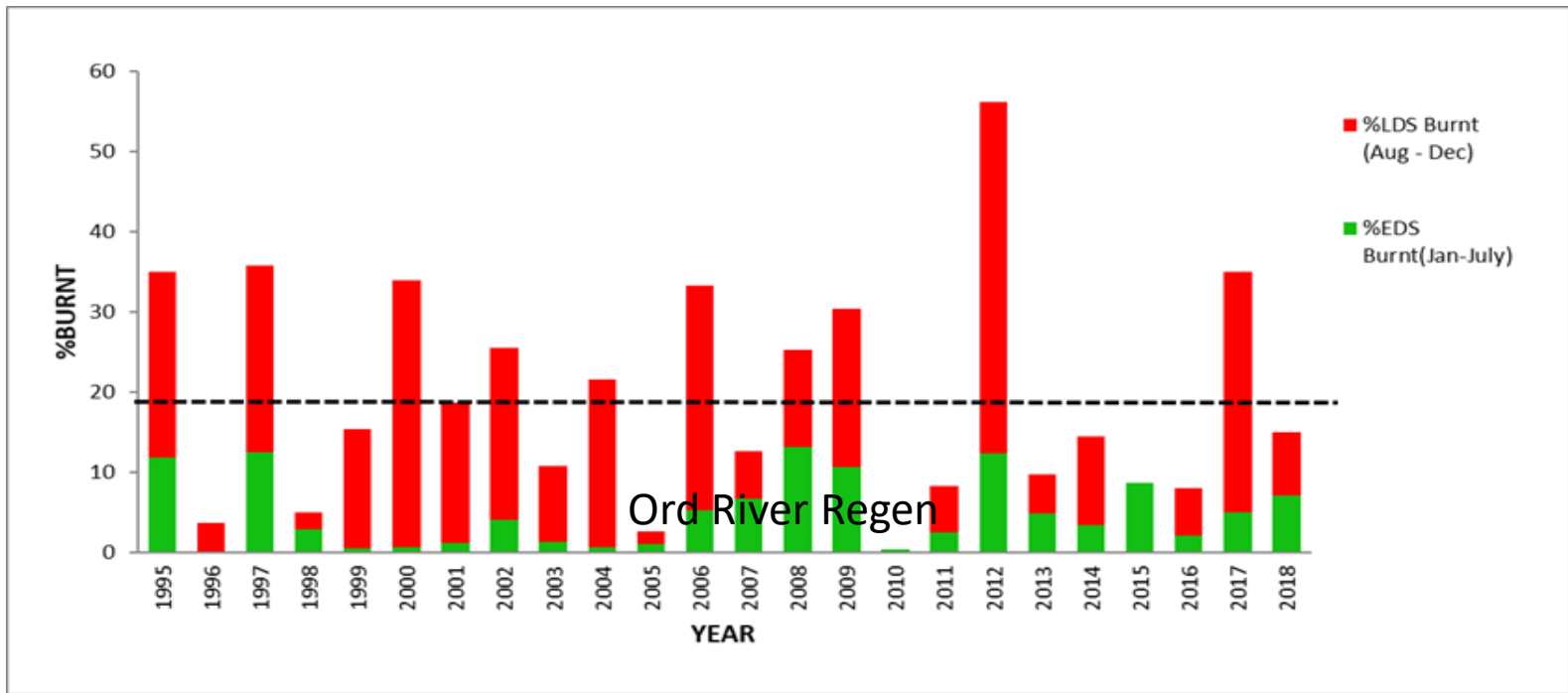
Year	%EDS Burnt (Jan-July)	%LDS Burnt(Aug - Dec)	Total % Area Burnt
2010	26	18	44
2011	3	14	17
2012	50	17	67
2013	12	23	35
2014	30	6	36
2015	43	6	49
2016	30	23	53
2017	26.4	0.1	26.5
2018	35	31	66
<b>Average</b>	<b>28.4</b>	<b>15.3</b>	<b>43.7</b>

# King Leopold Ranges CP



Year	EDS %	LDS %	TOTAL %
2010	25	7	32
2011	17	4	21
2012	40	24	64
2013	18	37	55
2014	25	13	38
2015	29	12	41
2016	33	24	57
2017	23	10	33
2018	38	20	58
<b>Averages</b>	<b>27.6</b>	<b>16.8</b>	<b>44.3</b>

# Purnululu NP/ ORRR



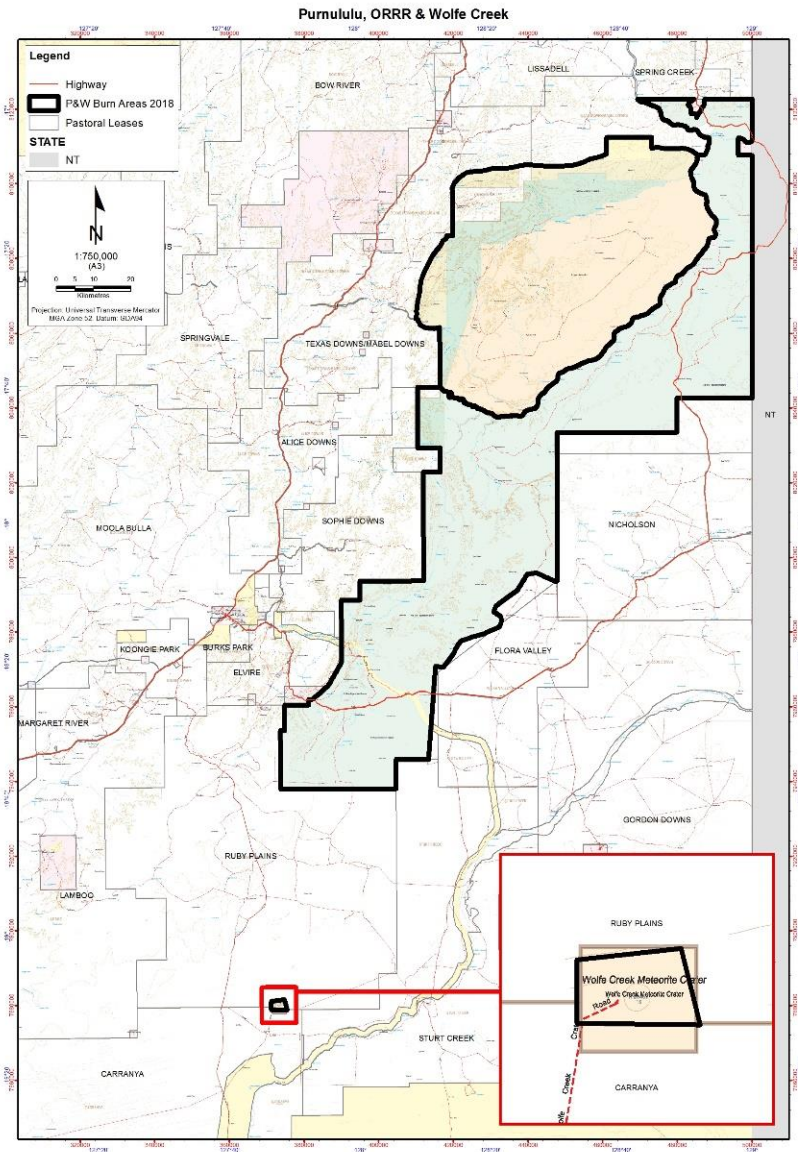
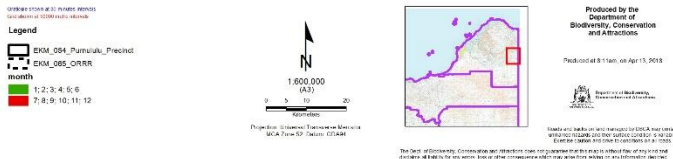
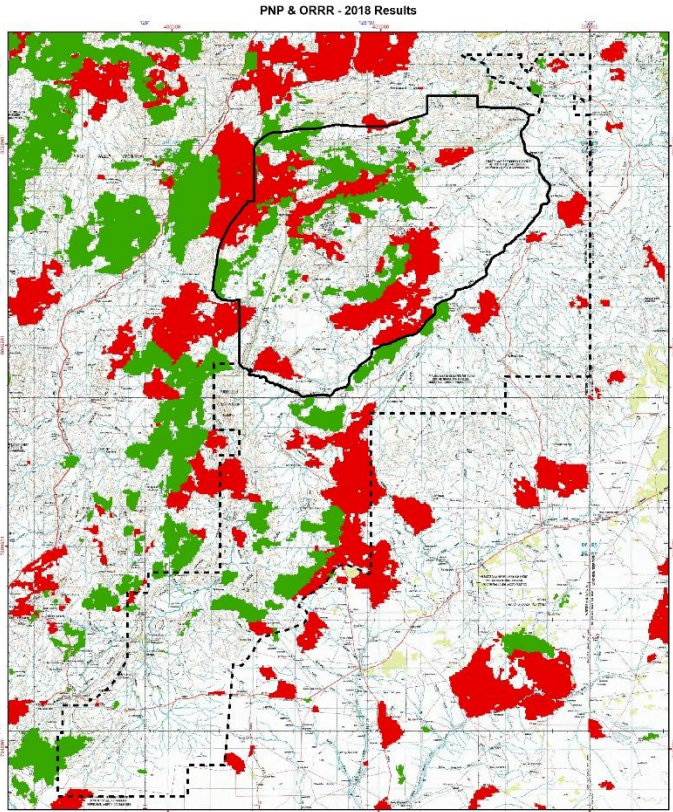
YEAR	EDS %	LDS%	TOTAL %
2009	10.6	19.7	30.3
2010	0.3	0	0.3
2011	2.4	5.8	8.2
2012	12.3	43.8	56.1
2013	4.8	4.9	9.7
2014	3.4	11	14.4
2015	8.6	0	8.6
2016	2	6	8
2017	5	30	35
2018	7	8	15
<b>Averages</b>	<b>5.6</b>	<b>12.9</b>	<b>18.6</b>

PNP ORRR > 600 mm	EDS %	LDS %	TOTAL %
Average 1995 - 2018	4.9	14.4	19.3



# Purnululu NP

## Ord River Regen Reserve



# Bush Fire Risk- Commercial Camps Purnululu



# Broome

- Yawuru Birragun
- Minyirr Park

2019 Parks & Wildlife Prescribed Burning - Broome



Prepared by the Department of Biodiversity, Conservation and Attractions  
 Date: 12/12/2018  
 Version: 1.0

WKM\_020 - Minyirr Park - Operations Map - 488 ha



Prepared by the Department of Biodiversity, Conservation and Attractions  
 Date: 12/12/2018  
 Version: 1.0

WKM\_020 - Minyirr Buru Conservation Park Reserves - Operations Map - 286 ha



Prepared by the Department of Biodiversity, Conservation and Attractions  
 Date: 12/12/2018  
 Version: 1.0



Department of Biodiversity, Conservation and Attractions  
 100 St Johns Street, Broome, NT 0870  
 Phone: 08 9078 1000  
 Fax: 08 9078 1001  
 Email: info@bca.gov.au  
 Website: www.bca.gov.au

# Broome-UCL Funding

WKM\_022 - 12 Mile UCL - Operations Map - 286 ha



Scale bar: 0 100 200 300 400 500 meters

**Legend**

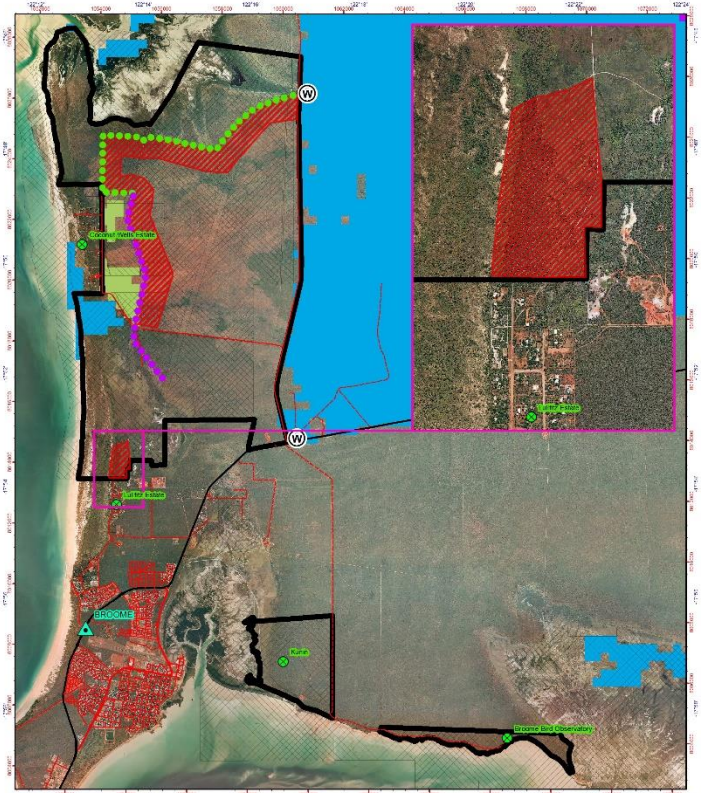
- TELSTRA equipment
- W Water Points
- Interest Points
- Highway / Freeway
- Minor road sealed
- Minor road unsealed
- Track
- WKM\_022\_12\_Mile\_UCL
- Gum Cuts
- FUEL AGE (Years)
- <1
- 1-2
- 2-3
- 3-4
- 4-5

Department of Biodiversity, Conservation and Attractions  
 12 Mile UCL Operations Map  
 1:50,000 Scale  
 2018



© 2018 Department of Biodiversity, Conservation and Attractions  
 All rights reserved. This map is a controlled document and its use is restricted to the purposes for which it was prepared.

WKM\_019 - Yawuru Birragun - Operations Map - 9,666 ha



Scale bar: 0 100 200 300 400 500 meters

**Legend**

- W Water Points
- Interest Points
- A WA townships
- Maintain Fire Break
- Upgrade Fire Break
- Highway, Freeway
- Main road sealed
- Minor road sealed
- Minor road unsealed
- Proposed Burn Area
- Managed Tenure
- WKM\_019
- FUEL AGE (Years)
- 1
- 2
- 3
- 4
- 5

Department of Biodiversity, Conservation and Attractions  
 Yawuru Birragun Operations Map  
 1:50,000 Scale  
 2018



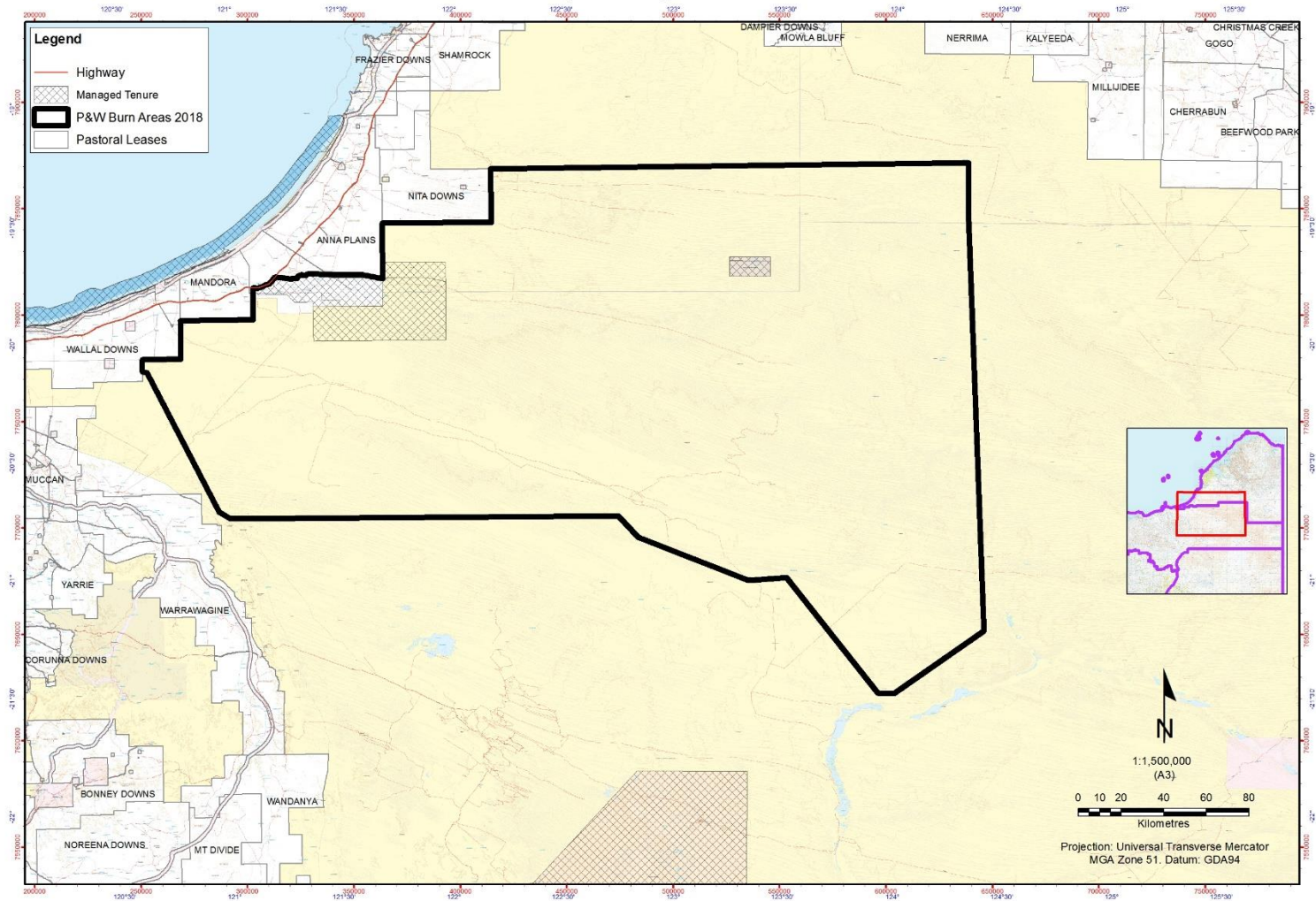
© 2018 Department of Biodiversity, Conservation and Attractions  
 All rights reserved. This map is a controlled document and its use is restricted to the purposes for which it was prepared.

# Broome Bushfire Mitigation



# Walyarta

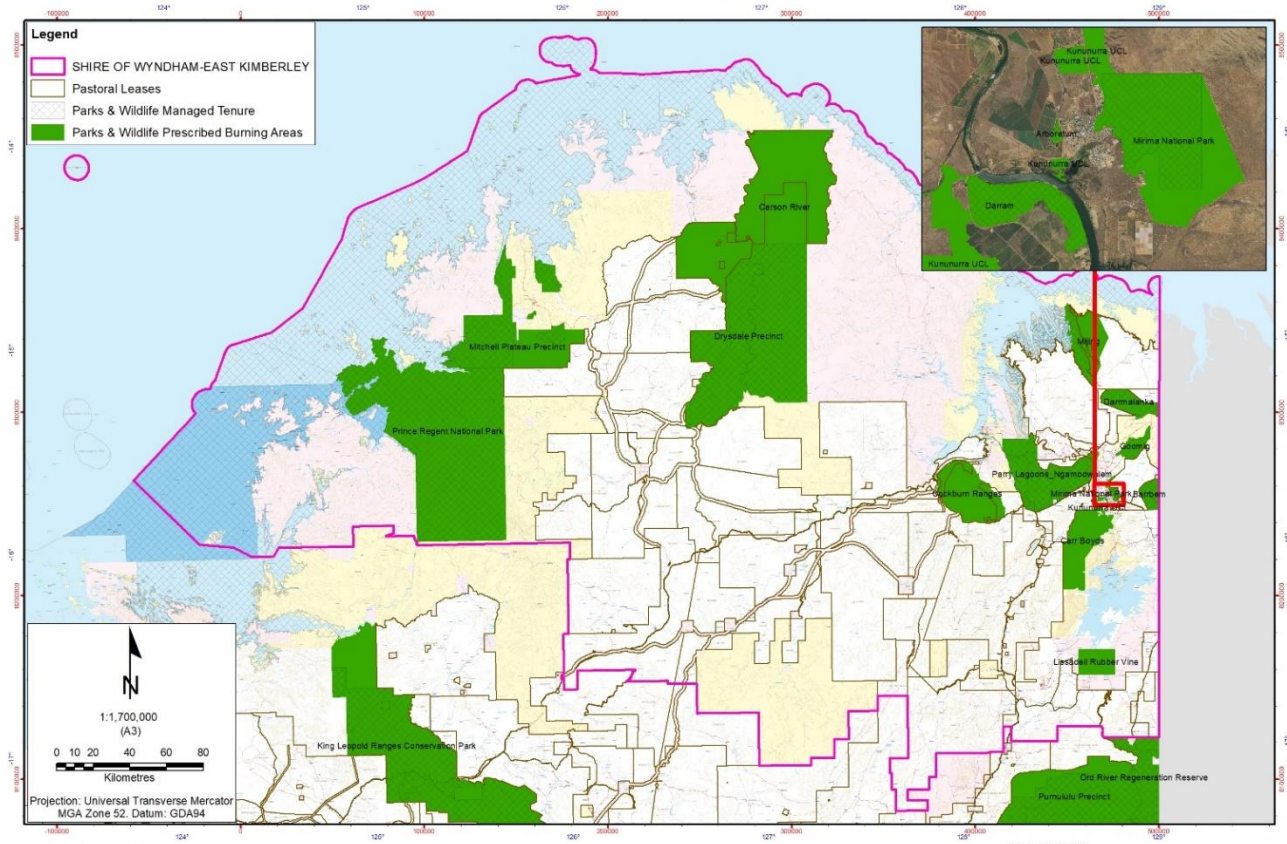
## Walyarta & Dragon Tree Soak



# Kununurra

- MG Reserves
- Carr Boyd Range
- Cockburn Range
- Townsite UCL

2019 Parks & Wildlife Prescribed Burning - Wyndham - East Kimberley



Grid lines shown at 1 degree intervals  
Grid shown at 100000 metre intervals

Roads and tracks on land managed by DBCA may contain unmarked hazards and their surface condition is variable. Exercise caution and drive to conditions on all roads.

The Dept. of Biodiversity, Conservation and Attractions does not guarantee that this map is without flaw of any kind and declines all liability for any error, loss or other consequence which may arise from relying on any information depicted.



Produced by the  
Department of  
Biodiversity, Conservation  
and Attractions

Produced at 10 25am, on Jan 10, 2018

# Rubber Vine Burn- Helitorch Operation





# Research and Monitoring



## ***Gouldian finch tracking Wyndham***

Ian helped Sydney Collett and Tara Crewe from CDU take down electronic gear and antennae from the Wyndham finch towers, to avoid damage to sensitive electronic equipment through lightning strike over the wet season. This trip also allowed the final download of finch movement data. A single tower with antennae left up will remain to look at finch movements during the critical wet season period, and also to test whether its viable for towers to remain active during the wet season.

## ***Biodiversity monitoring in Mirima National Park***

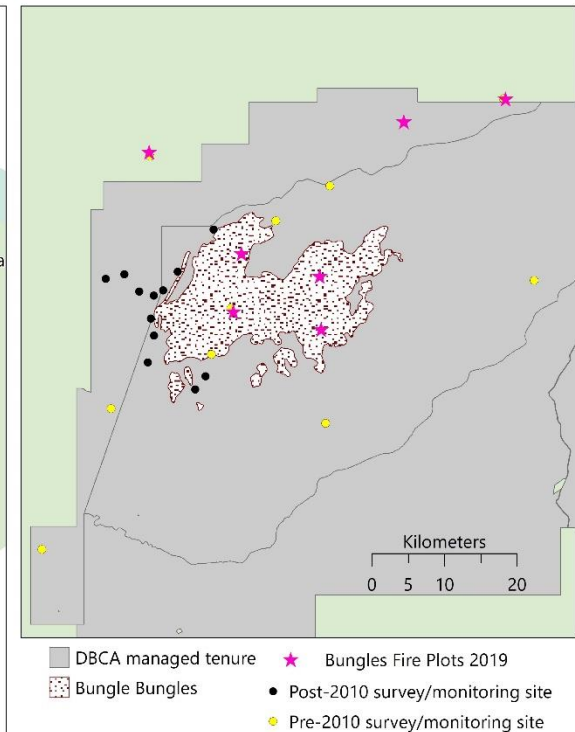
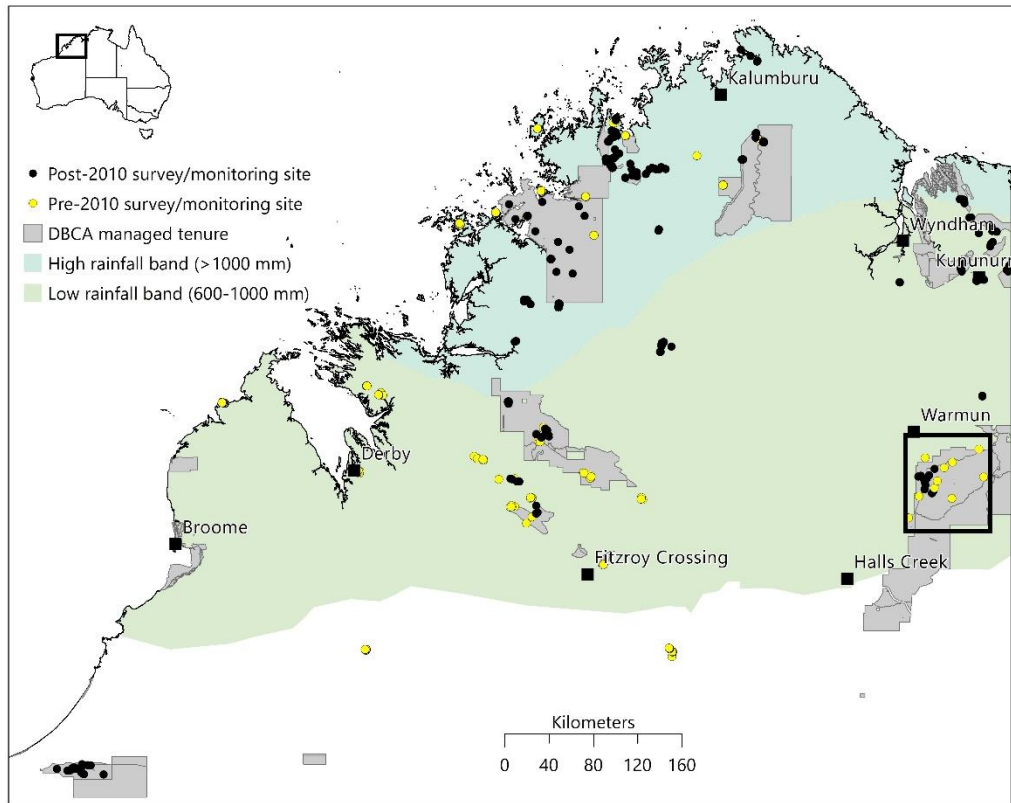
Richard and Ian re-trapped their biodiversity monitoring sites in Mirima National Park, adding to our knowledge of long-term impacts of toads and fire here. Given that a high intensity wildfire has since swept through the entire Reserve (again), it will be interesting to watch recovery of vegetation and fauna in the post-toad invasion environment.



# Research and Monitoring

## **Bungle Bungles fire project**

Ben and Ian began planning the establishment of fire monitoring plots on the Bungle Bungle massif in Purnululu National Park. The plan here is to establish camera arrays to survey small mammals and permanent vegetation monitoring plots to look more closely at the effectiveness of prescribed burning.



# Carbon Projects

Savanna Burning Emissions Avoidance Method		ACCUS			
Project Area/Reserve	Baseline Period	2016	2017	2018	Total
Prince Regent NP (Registered 2016)	2006-2015	14900	13443	18404	46747
Drysdale River NP (Registered 2017)	2007-2016	N/A	25999	-35896	-9897
Purnululu NP and ORRR (Registered 2016)	2003-2018	N/A	N/A	-857	-857
King Leopold Regional CP (Registered 2018)	2003 - 2018	N/A	N/A	-4552	-4552
Actual ACCUS generated (Project fully operational)					
Hypothetical ACCUS generated (Projects conditional, no reporting done)					

## Current Kimberley Challenges

- Staff deployed to incidents in southern WA and Tasmania
- Internal policy processes
  - Operational timelines and approval processes don't align with the southern regions
  - State Carbon Policy review
  - Biodiversity Conservation Act-Authority to Take Threatened Fauna
  - Ministerial Approval to burn Non CALM Act land

