



# QPWS NAFM Report April 2019

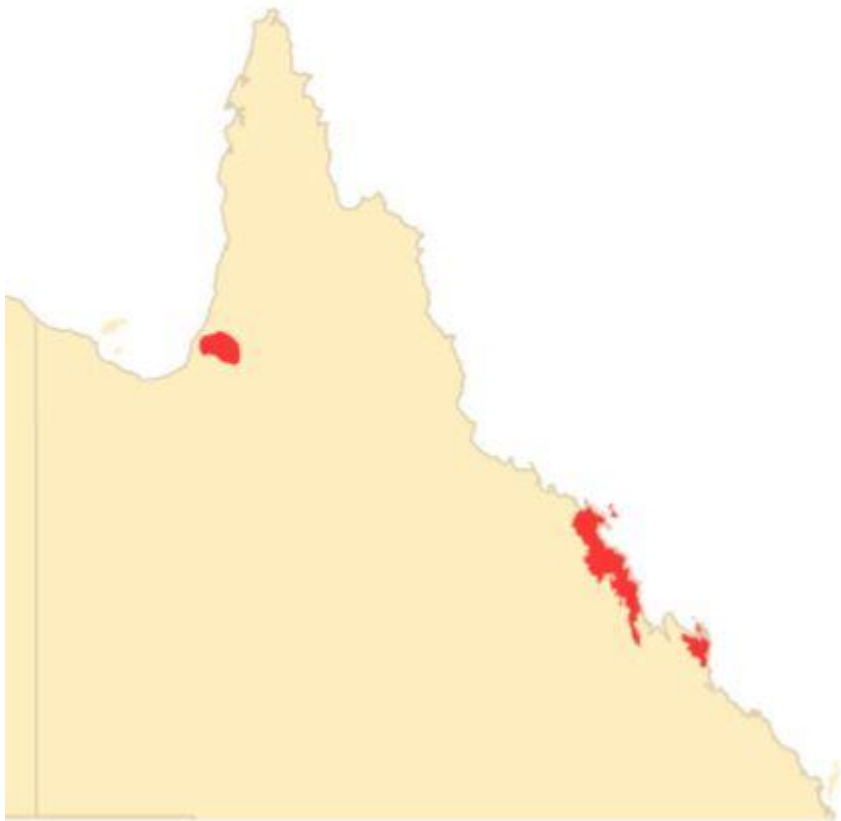


**Queensland**  
Government

# 2018 Season



bushfire@natural  
HAZARDS CRC



- Exceptionally dry hot quarter – September to November
- Extraordinary fire weather in late November – extent and intensity
- Similar level of fire activity to 2009
- Fire extended into wetter environments



**Queensland**  
Government

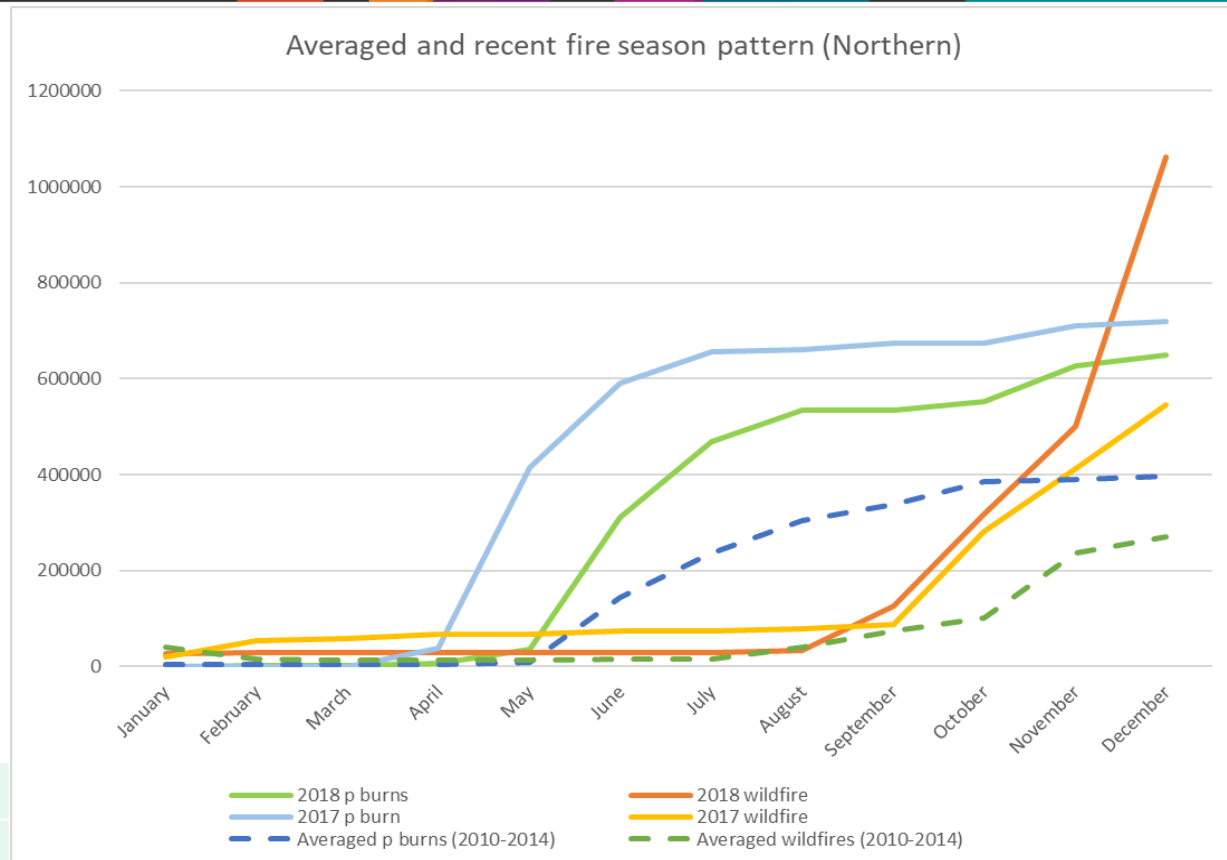
## The Contrasting Year

*'A heatwave affected the north tropical and central coasts of Queensland from 24 November 2018. Numerous locations reported their highest daily maximum temperature on record for November, or for any month, with some locations breaking their previous record by a large margin.'* Compounding higher temperatures, monthly total rainfall for Mackay was below average for each month of 2018 except for April.

*After the initial rainfall suppressed the fire, the area received daily rain for the next 15 days, of between one and 78mm each day. This was then followed by almost doubling the average monthly rainfall for January 2019. Over 450mm of rain was received during the last weekend of January 2019.*



# 2018 Fire Season



		Number	Area
Central	Planned Burns	33	57,751
	Wildfires	59	429,522
Northern	Planned Burns	93	641,619
	Wildfires	103	1,061,659

# Mt Etna – the Caves Fire

- Conditions on day of ignition – 3pm 28 November 2018 – 42.8°C; 10% RH; 52km/h westerly.



Fire Severity Class	Area (ha)
Unburnt	148
Extreme	54
Very high	85
High	88
Moderate	161
Low	44
Total	581

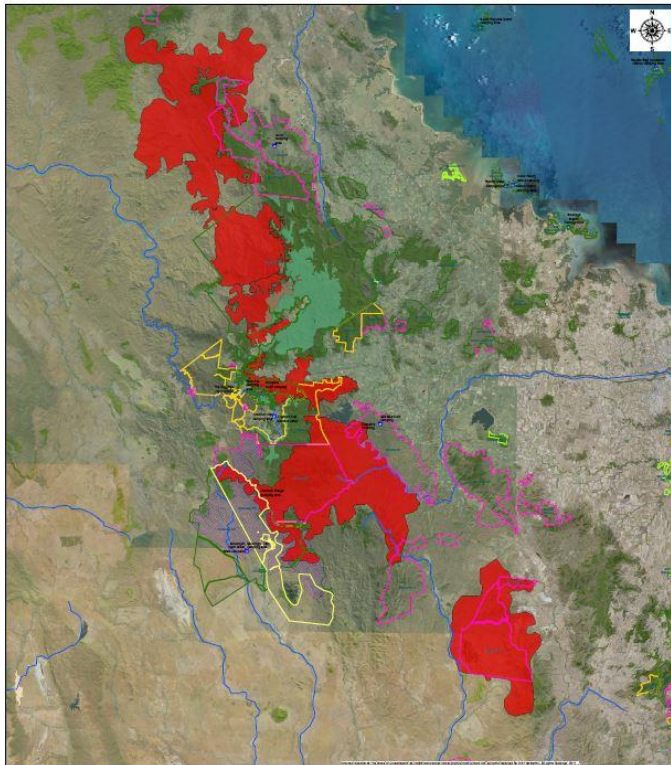




# Mackay Highlands

Fire Severity	Area (ha)
Extreme	232
High	768
Moderate	3080
Low	1945
<b>Total (Rainforest burnt)</b>	<b>6025</b>

Mackay Highlands - Wildfire (November -December 2018)



© The State of Queensland  
Department of Environment & Science 2019

**Source:**  
Department of Environment & Science,  
PFRS (Planning Practice and Program Evaluation) data,  
Eggleston, Map Grid of Australia Zone 55  
Creative Commons BY 4.0

**ACCURACY:** 90% (Overall)  
Data is being reviewed as more spatial  
information may become available.

**Disclaimer:**  
This map is compiled from information supplied to the  
Department of Environment & Science (DES).  
While we make every effort to ensure the data is accurate,  
DES does not assume any responsibility for any loss  
or damage arising from the use of this map or information  
in this map. For the full text of the information contained herein

**MAP PRODUCTION:**  
National Institute of Fire Management Ltd.  
Geographic Information Systems Services  
MapMaker, 04 January 2019

**Legend**

- Cloud Rainforest
- Rainforest burnt/active: grey
- Rainforest burnt/active: orange
- Rainforest burnt/active: yellow
- Rainforest burnt/active: light green
- Rainforest burnt/active: dark green
- Rainforest burnt/active: brown
- Rainforest burnt/active: black
- Non-rainforest burnt
- Roads
- Water
- Infrastructure
- Non-rainforest burnt (PLANT)
- Non-rainforest burnt (PLANT)

0 2.5 5 10 15 Kilometres

1:200,000

Queensland Government



Fire Severity	Area (ha)
Extreme	24
High	130
Moderate	582
Low	838
<b>Total (Cloud Rainforest burnt)</b>	<b>1576</b>

# Some contributing factors

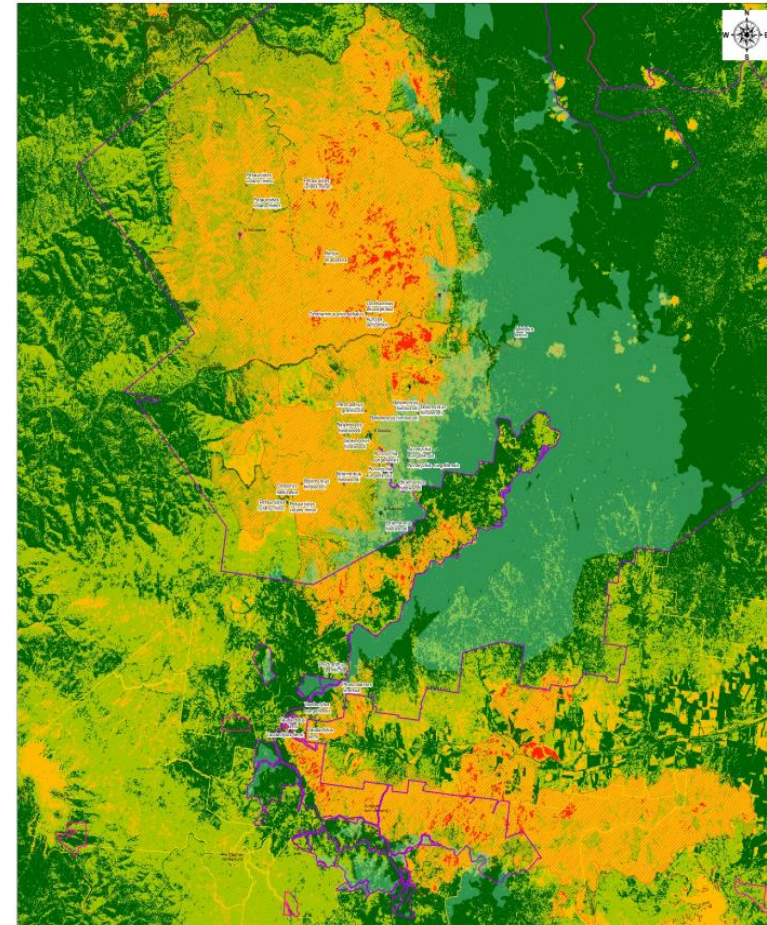
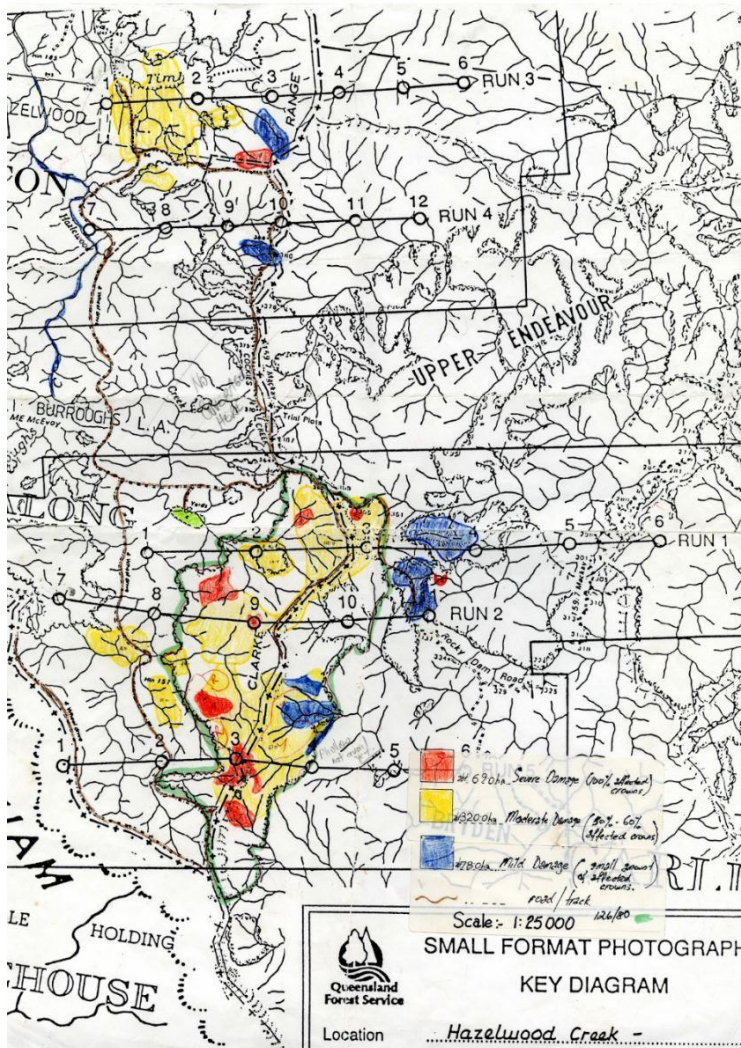
- Disturbance – cyclones; timber harvesting; fires; weeds/vines
- Extreme weather (drought) conditions





# Fire Intensity Mapping

Mackay Highlands - Wildfire (2018) Species of Conservation Significance



© The State of Queensland  
Department of Environment & Science 2018  
Source:  
Department of Environment & Science  
DEES (including Parks and Regional Ecosystems data)  
Projection: Map Grid of Australia Zone 55  
Datum: GDA94

ACCURACY STATEMENT  
Data is being presented as a guide.  
No warranty is made as to the accuracy of the data.  
No liability is accepted for any loss or damage which may result from reliance on the information contained herein.

MAP PRODUCTION:  
Technical Support: Fire Management Centre  
Quantitative Parks and Wildlife Services (QPWS)  
Department of Environment & Science  
November 27, January 2018

1:55,000

- Legend**
- Species of Conservation Significance (Wildnet)
  - E. moluccana community
  - E. grandis community
  - National Park
  - Forest Reserve
  - State Forest
  - Cloud Rainforest
  - Eucalypt communities - grassy
  - Eucalypt communities - shrubby
  - Eucalypt communities - aluvial plains
  - Riparian, springs, fringing and dune communities
  - Rainforest and vine thickets
  - Non-remnant
  - Final Fire scars (PLANET)





# What was different

## During

- Suppression with 737 aircraft
- Residence protection
- Extensive area

## After

- Rapid assessment
- Recovery promises
- Staff response





## 2019 The Year Ahead

- Monsoonal Event
- Trevor
- Good wet season
- The Gaps
- Business as usual?

